

# Reports on peatland mapping of the resource and its condition in the UK - Scotland

Steve Chapman

With help from:

Laura Poggio

Alessandro Gimona

Matt Aitkenhead

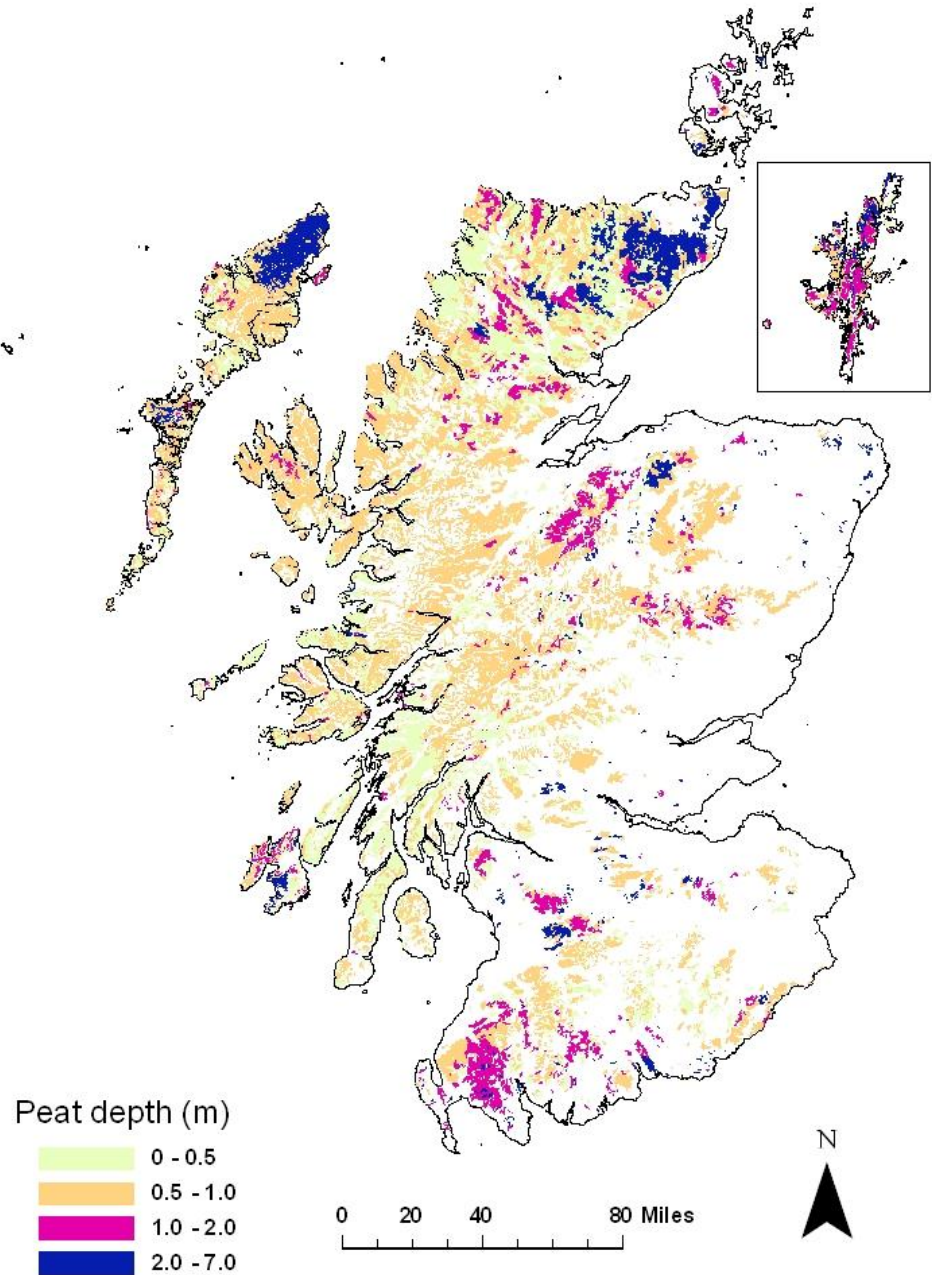
Rebekka Artz



The James  
**Hutton**  
**Institute**



The James  
**Hutton**  
Institute

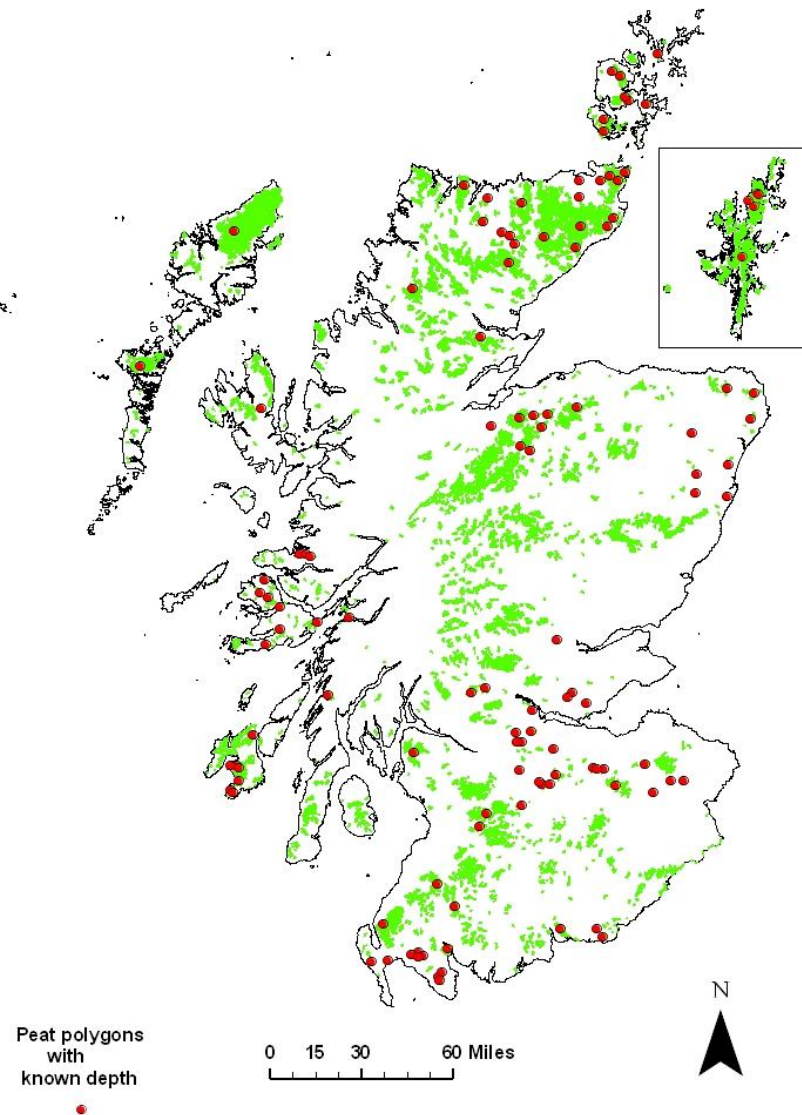


**Peatland area  
(mapped  
'70s/'80s)  
Peat depth  
(surveyed  
'50s/'60s)**

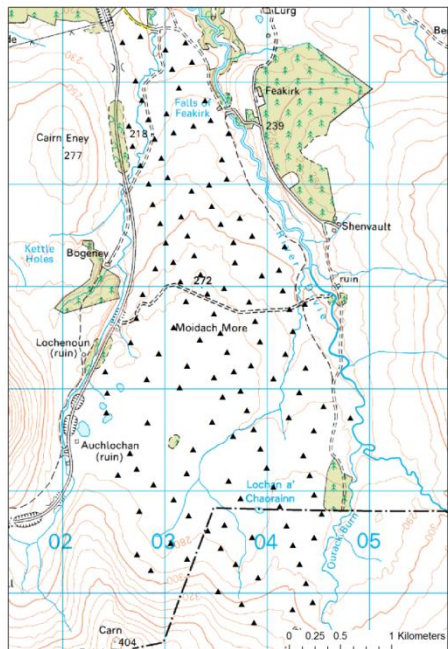
# Areas sampled for depth



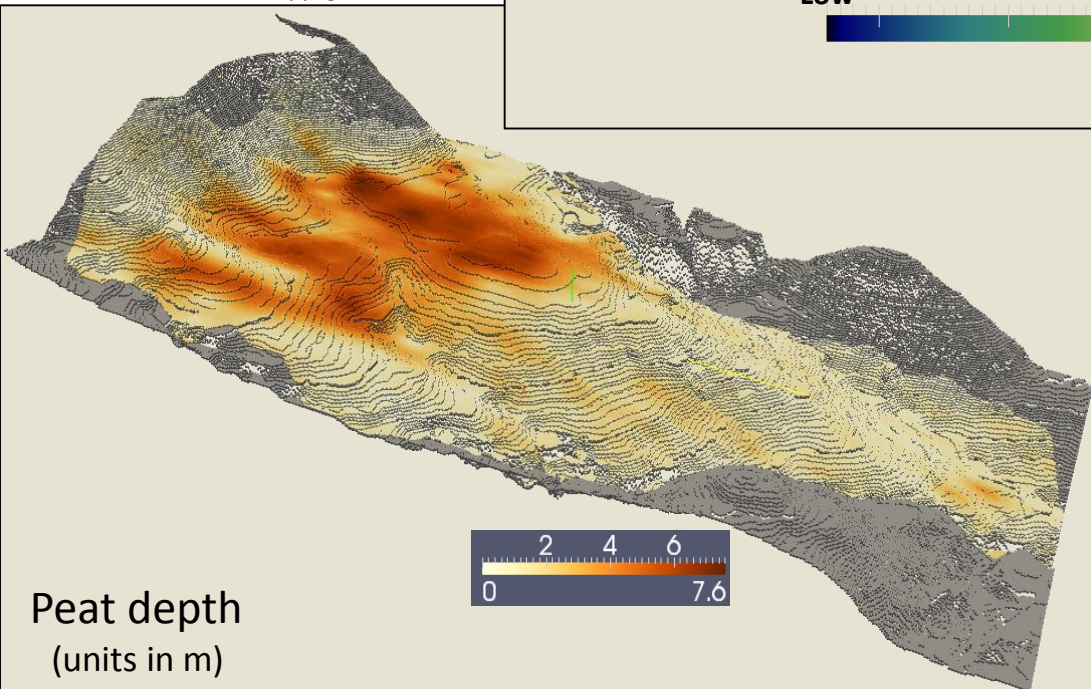
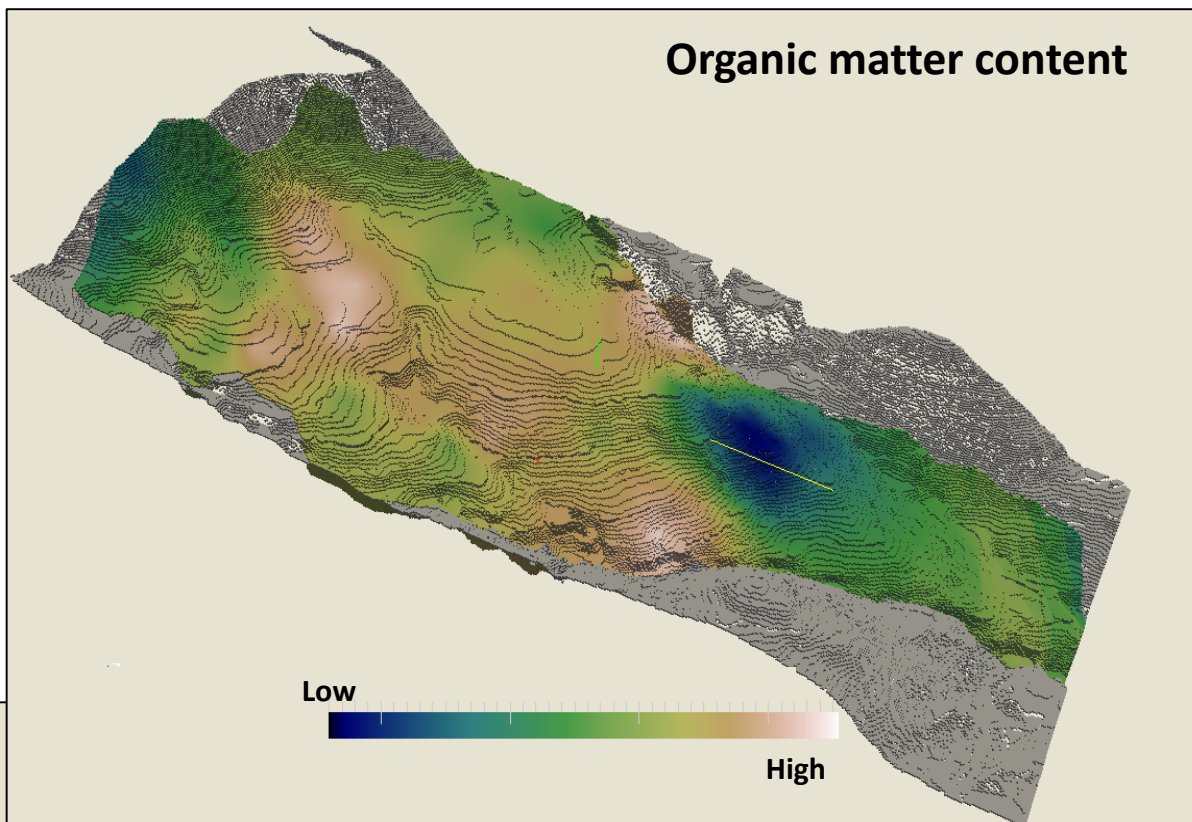
The James  
**Hutton**  
Institute



Copyright Macaulay Institute 2008



© Crown Copyright



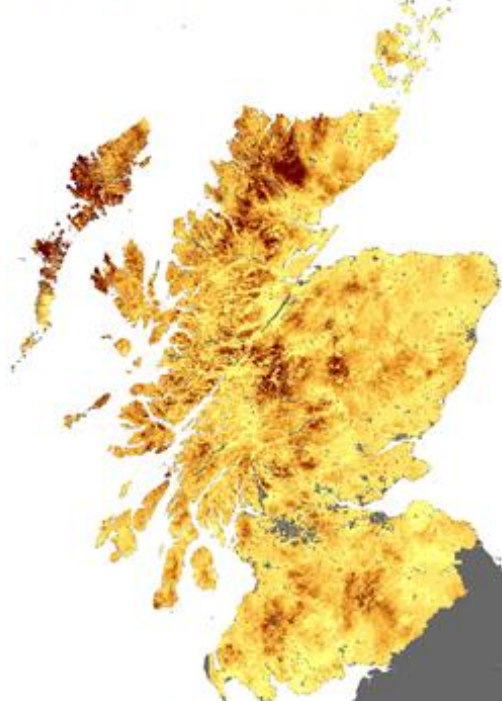
## 3D modelling of a peat bog

# Carbon stocks modelled from soils database



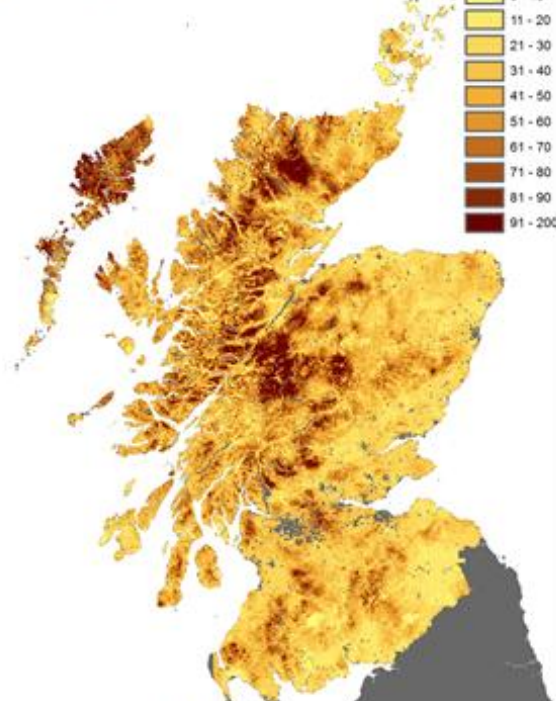
The James  
Hutton  
Institute

Lower 5% confidence interval



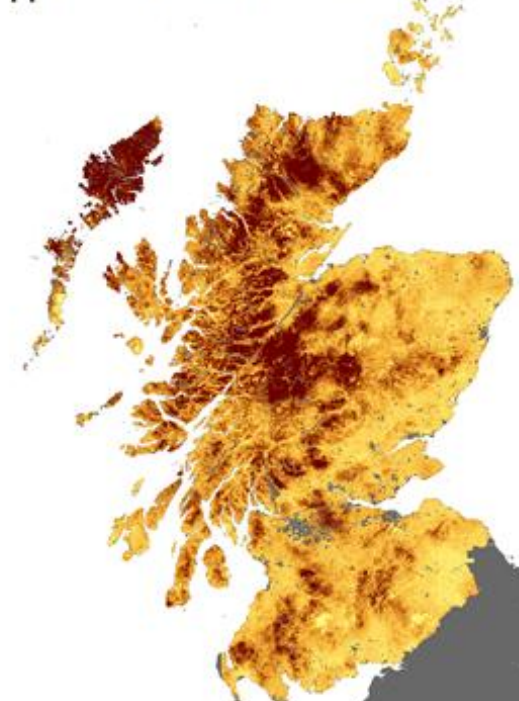
Total stock: 2510 MT

Central estimate



Total stock: 3141 MT

Upper 95% confidence interval



Total stock: 3908 MT



The James  
**Hutton**  
Institute

# Imagery demonstrating peatland drainage prototype - from Yell





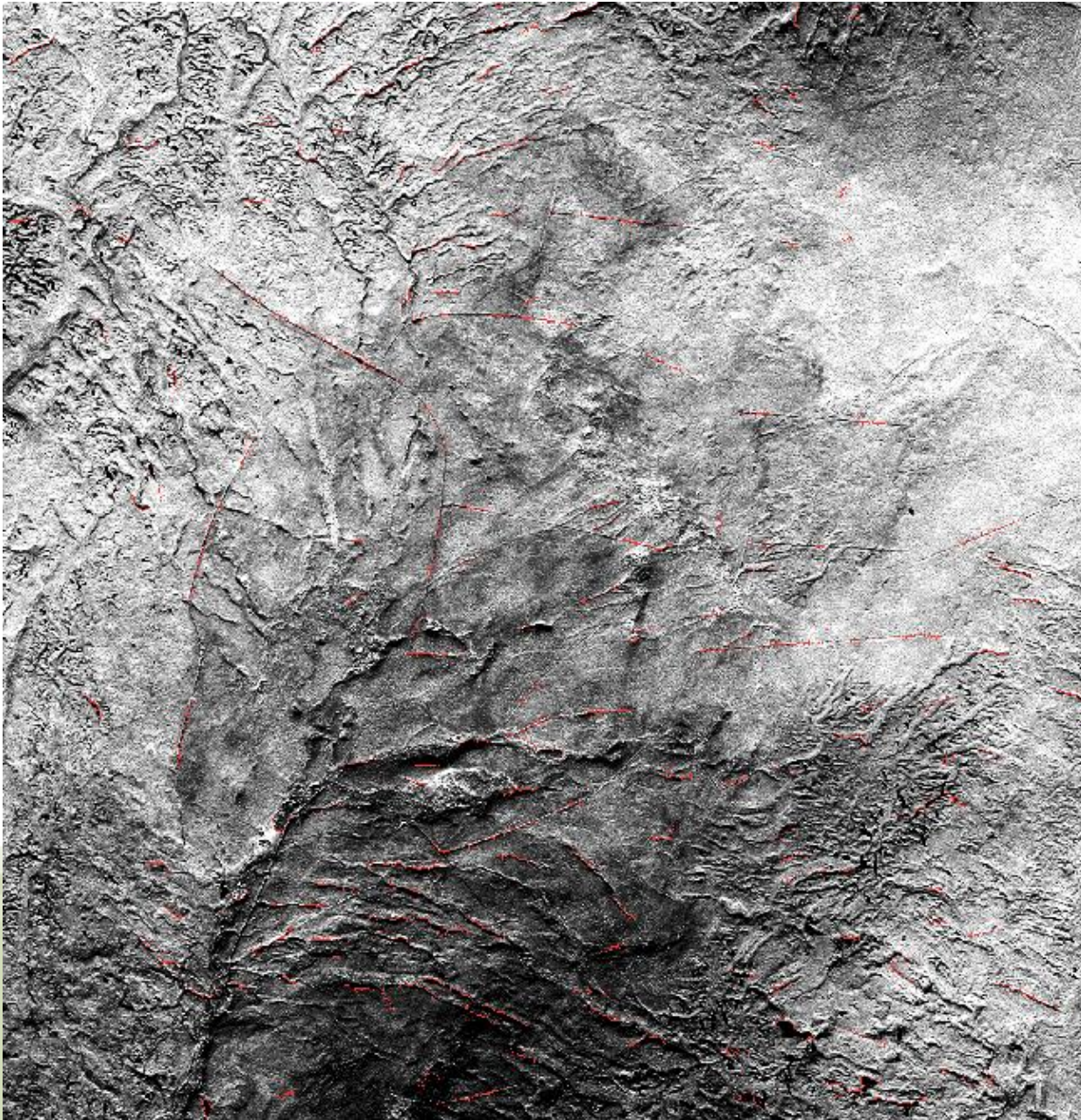
The James  
**Hutton**  
Institute

# Drainage channels detected





The James  
**Hutton**  
Institute



**Image  
overlay**

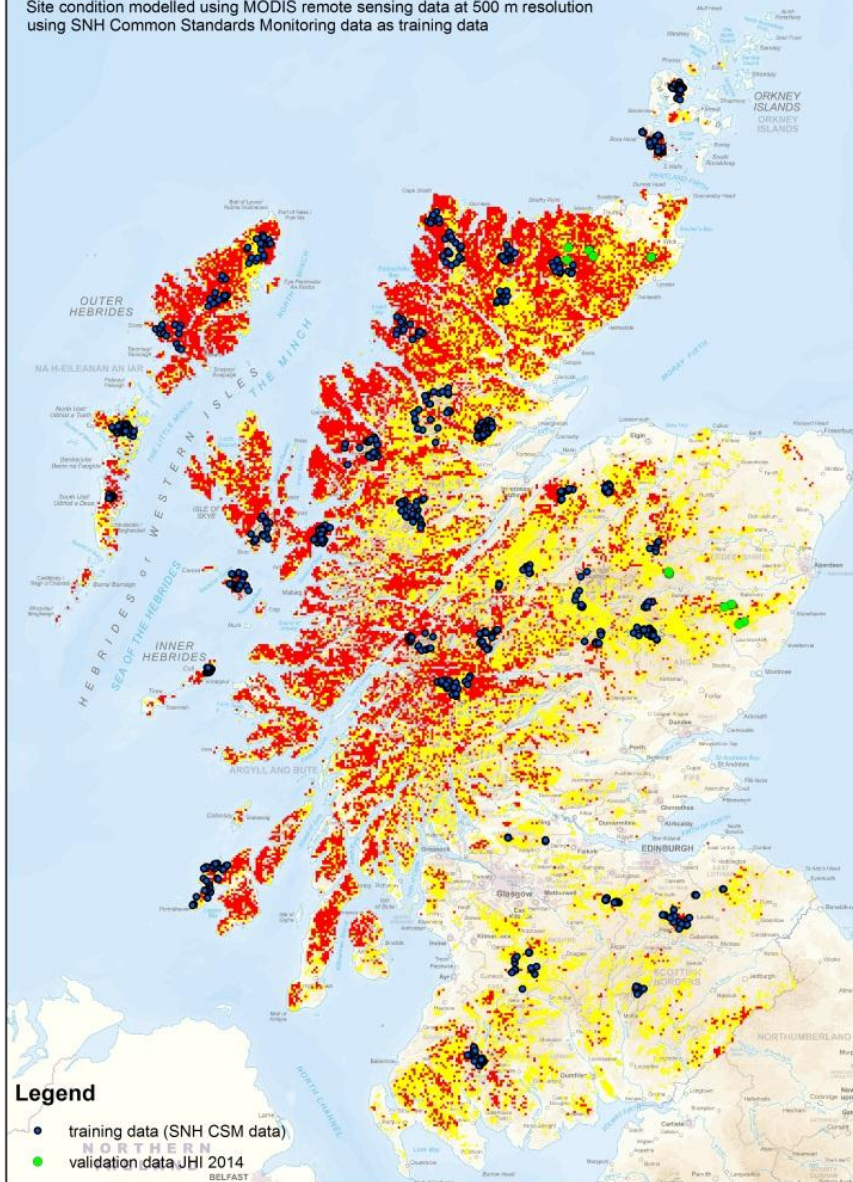




The James  
Hutton  
Institute

## Modelled peatland site condition

Site condition modelled using MODIS remote sensing data at 500 m resolution using SNH Common Standards Monitoring data as training data



## Site condition modelling (draft)

- Uses 500 m resolution time series (weekly since 2000) MODIS remote sensing data
- Model built using SNH's site condition monitoring dataset (individual point data, not site!)
- Being validated by independent field surveys at present