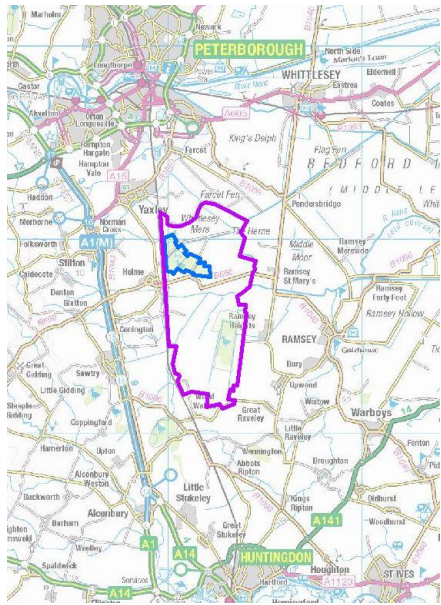
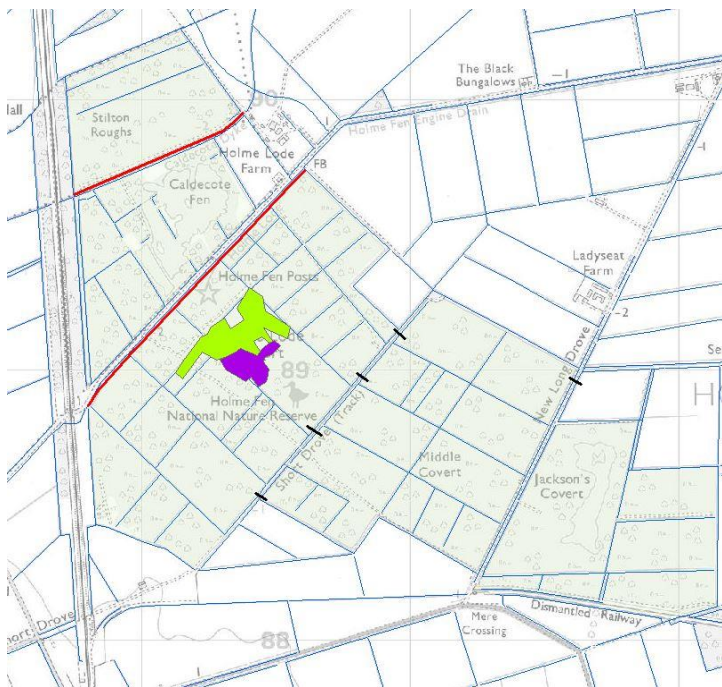


Holme Fen National Nature Reserve



Blue NNR within Purple Great Fen Project area. Some of the lowest lying land in the UK nearly three metres below sea level. Intensive agriculture across the Fens depleting peat soils. Large hydrological gradient, huge trees and degraded peat.



Blue drainage system, Red IDB drains within NNR, black adjustable dams, purple existing heath and green new clearing financed by DEFRA Peatland budget.

Several detailed reports have been produced over the years looking at how to restore the peatland, including whether it is possible and also identifying options for hydrology and drainage. The site is designated primarily for birch woodland. Can the peat be restored whilst retaining a large proportion of forest?

Follow the Natural England West Anglia NNR Manager on www.instagram.com/senior_reserve_manager

