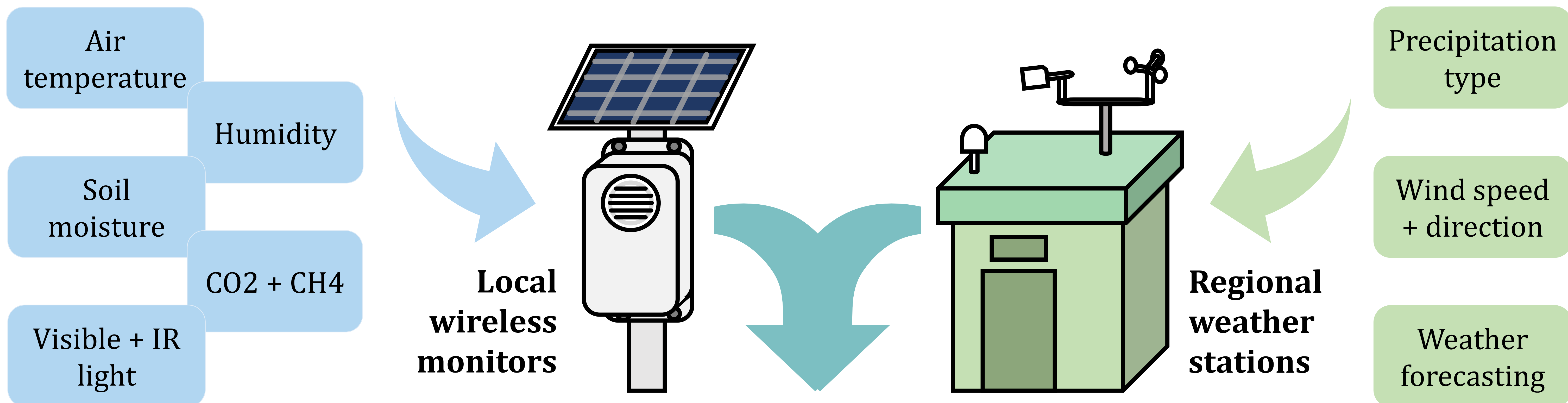


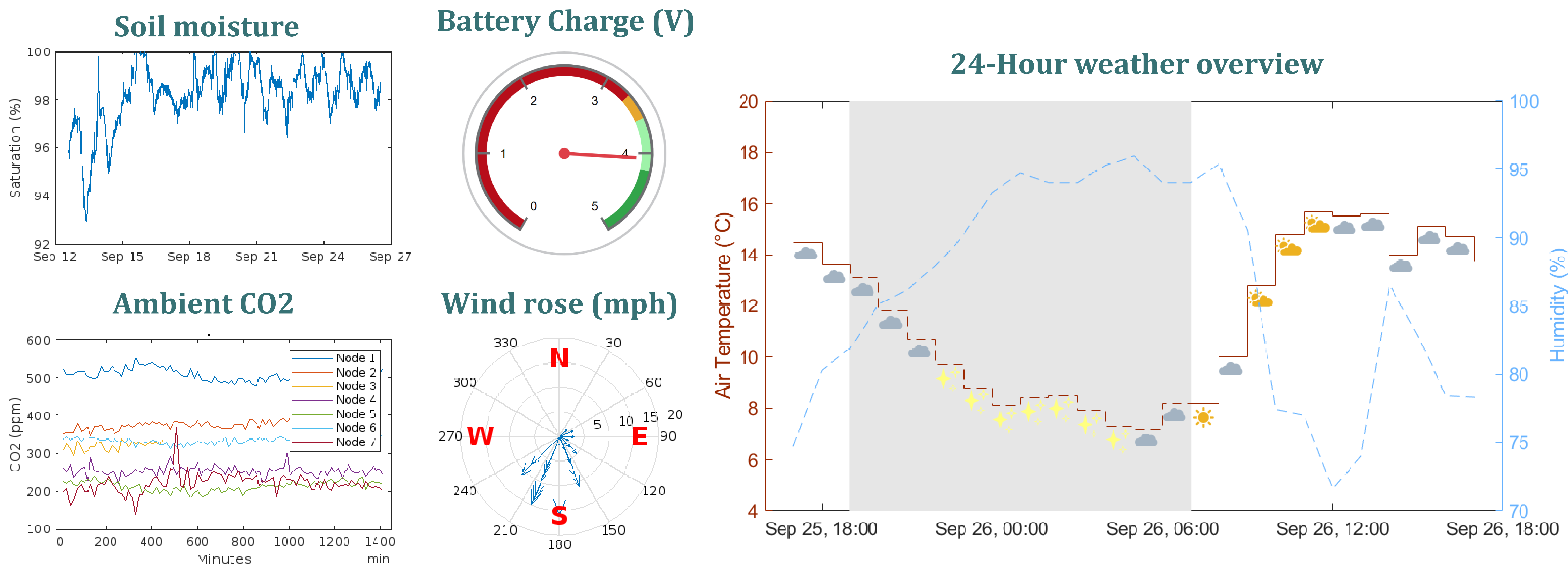


A Wireless Sensor Network for Monitoring Peatland Conditions

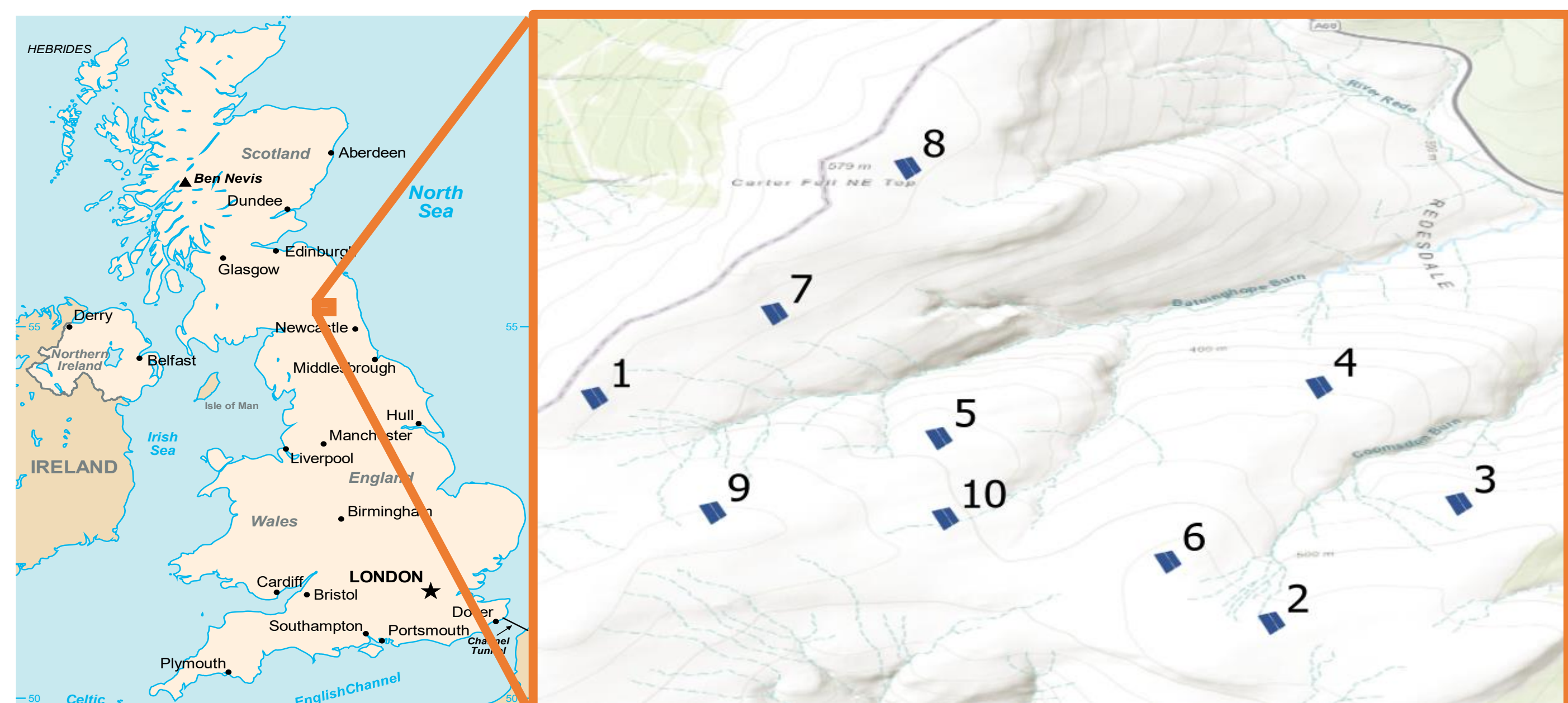
Hazel Mitchell, Prof Simon Cox, Prof Hugh Lewis



Cloud-based Live Dashboard



Field Deployment at Whitelee Moor



- 10x wireless sensor nodes deployed to monitor site conditions over a multi-year restoration project by the Northumberland Peat Partnership.
- Sensor nodes take measurements every 15 mins and transmit readings over cellular data every 1-2 hours, depending on battery charge.

