



NORTHUMBERLAND Peat Partnership

Aim

To put 35,00ha of degraded peatland into restoration by 2035

How Funded?

- Esmée Fairburn Foundation
- Nature for Climate and Peat (NCP) Discovery Grant
- Countryside Stewardship scheme etc.

What we do?

- Currently survey blanket and raised bog
- Northumberland, north of A69 to Scottish border
- Compile restoration plans and seek restoration funding, including Peatland Code Carbon credits



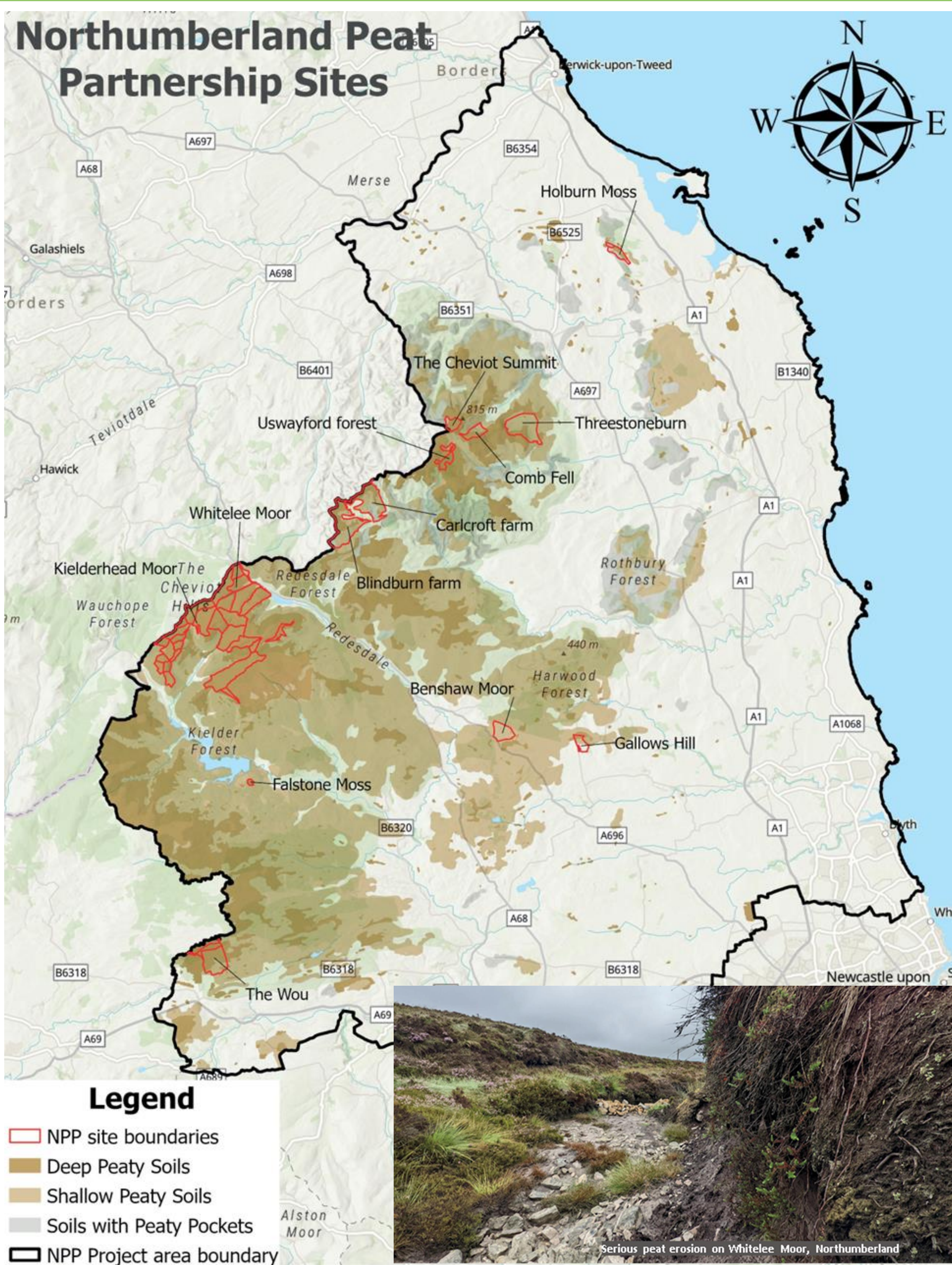
NPP team: Programme Manager, Engagement Officer, Data Officer and 4 field surveyors



Methods: Remote sensing, GIS to map and identify degrading features. Field survey vegetation, peat depth, water table depth



More methods: hydrological dip wells and Co2/CH4 sensors. Shift to telemetry & digitised data to allow sharing with partners



Since May 2021 **8,600 ha** degraded peat surveyed in Northumberland National Park



Northumberland National Park

Who? We work with all these organisations



SCAN ME