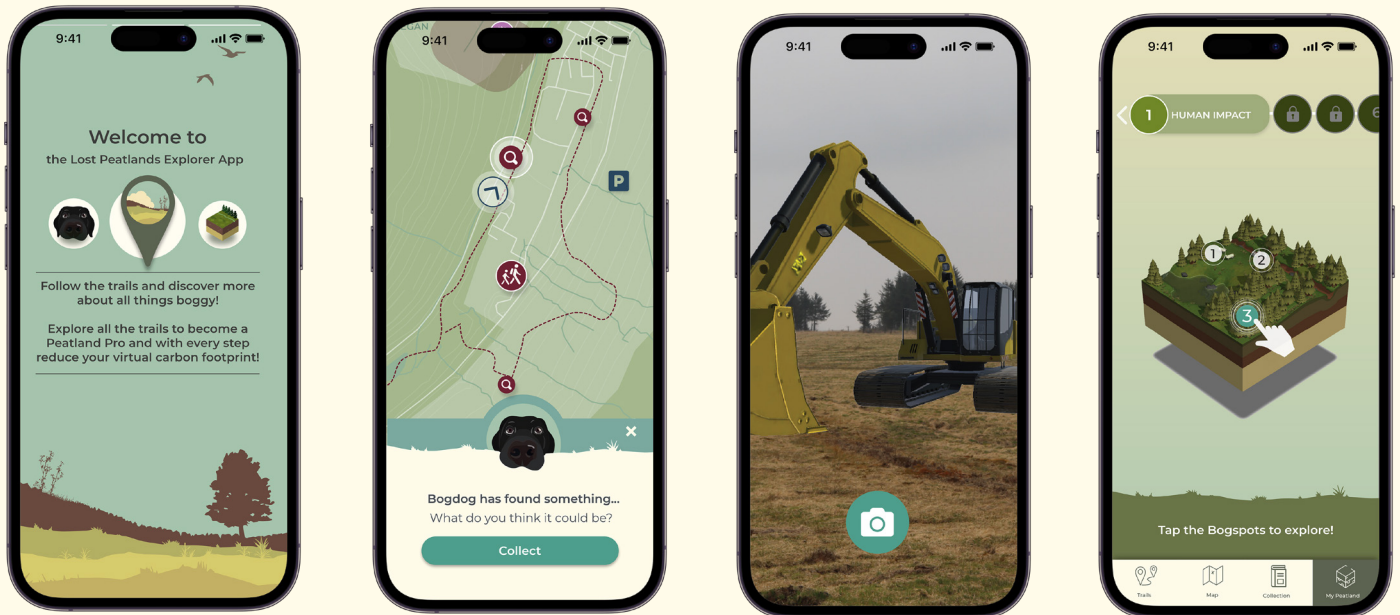


The Lost Peatlands Explorer App



The App encourages communities and visitors to explore the uplands of Neath Port Talbot and Rhondda Cynon Taff, reconnecting them with the stories and heritage of their landscape and helping them to understand its importance for wildlife conservation and carbon sequestration.

'Bog Dog' will guide visitors along different trails in the area, allowing them to unlock information about their heritage and natural history as they explore.

With Augmented Reality, visitors will be able to see restoration in progress and control their own virtual excavator. They'll also be able to restore their own virtual peatland by collecting tools and processes to gain an understanding of how and why peatland restoration is carried out.

Not able to visit the Project Area?
Just toggle 'offsite mode' in the settings!

