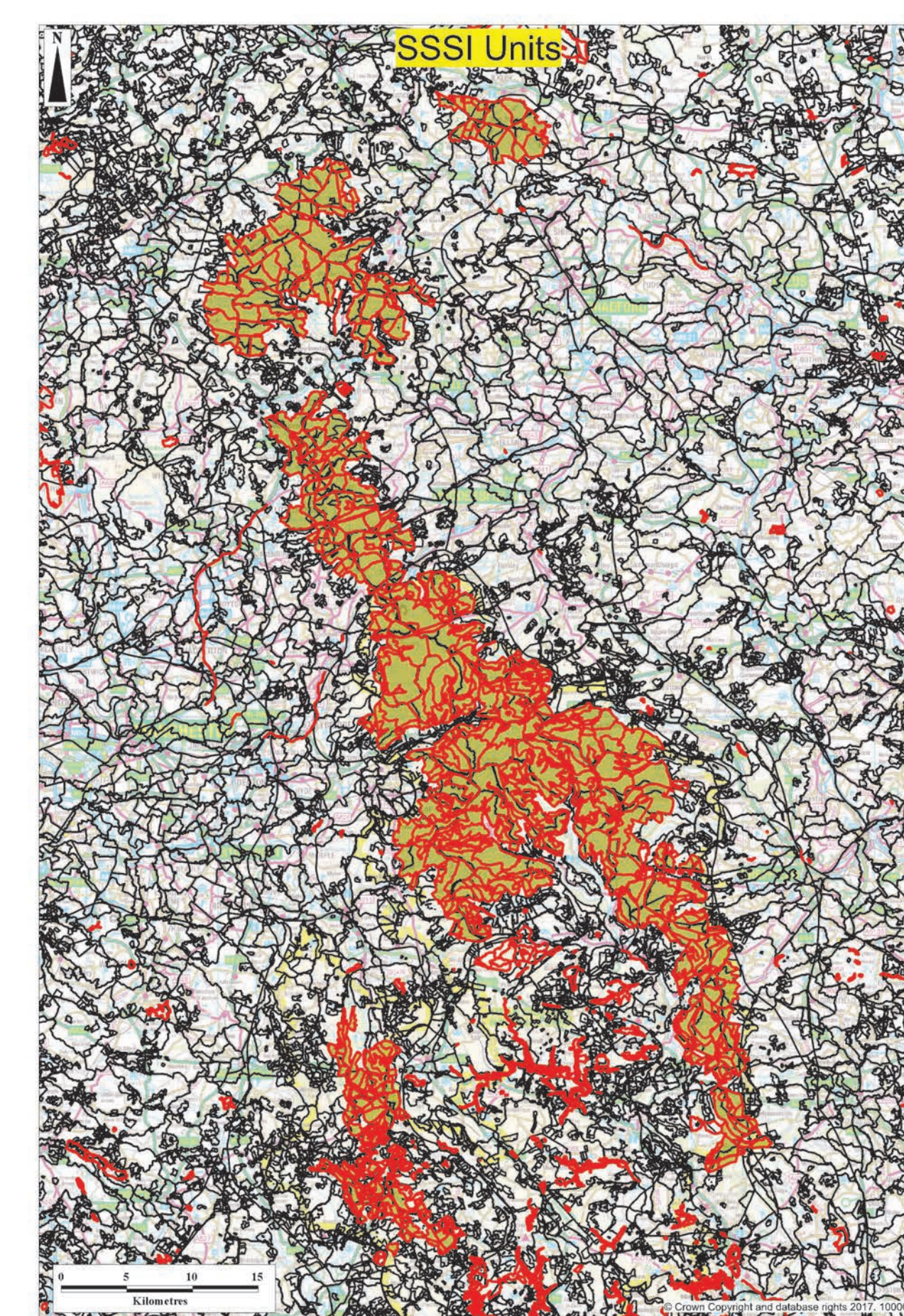
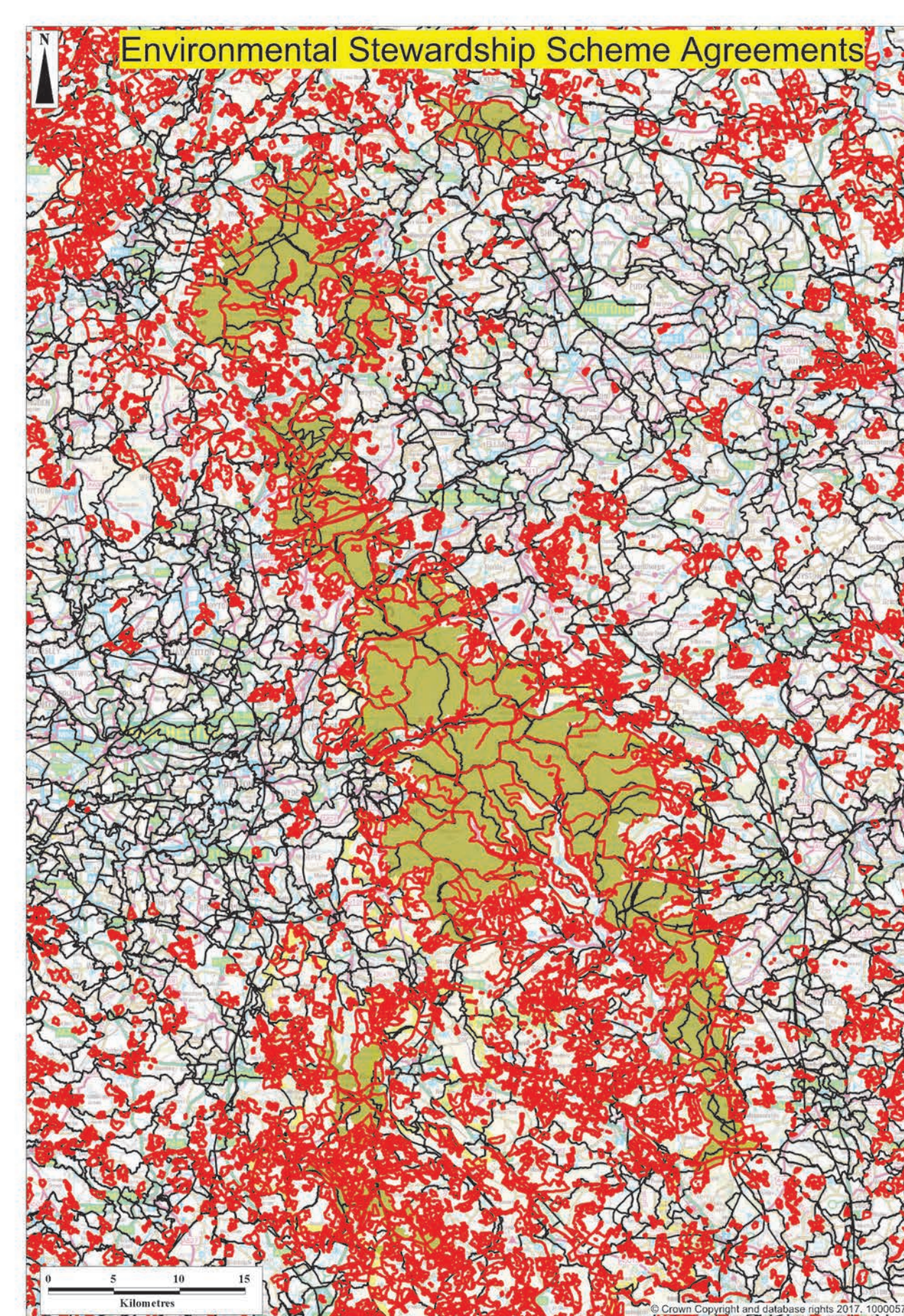
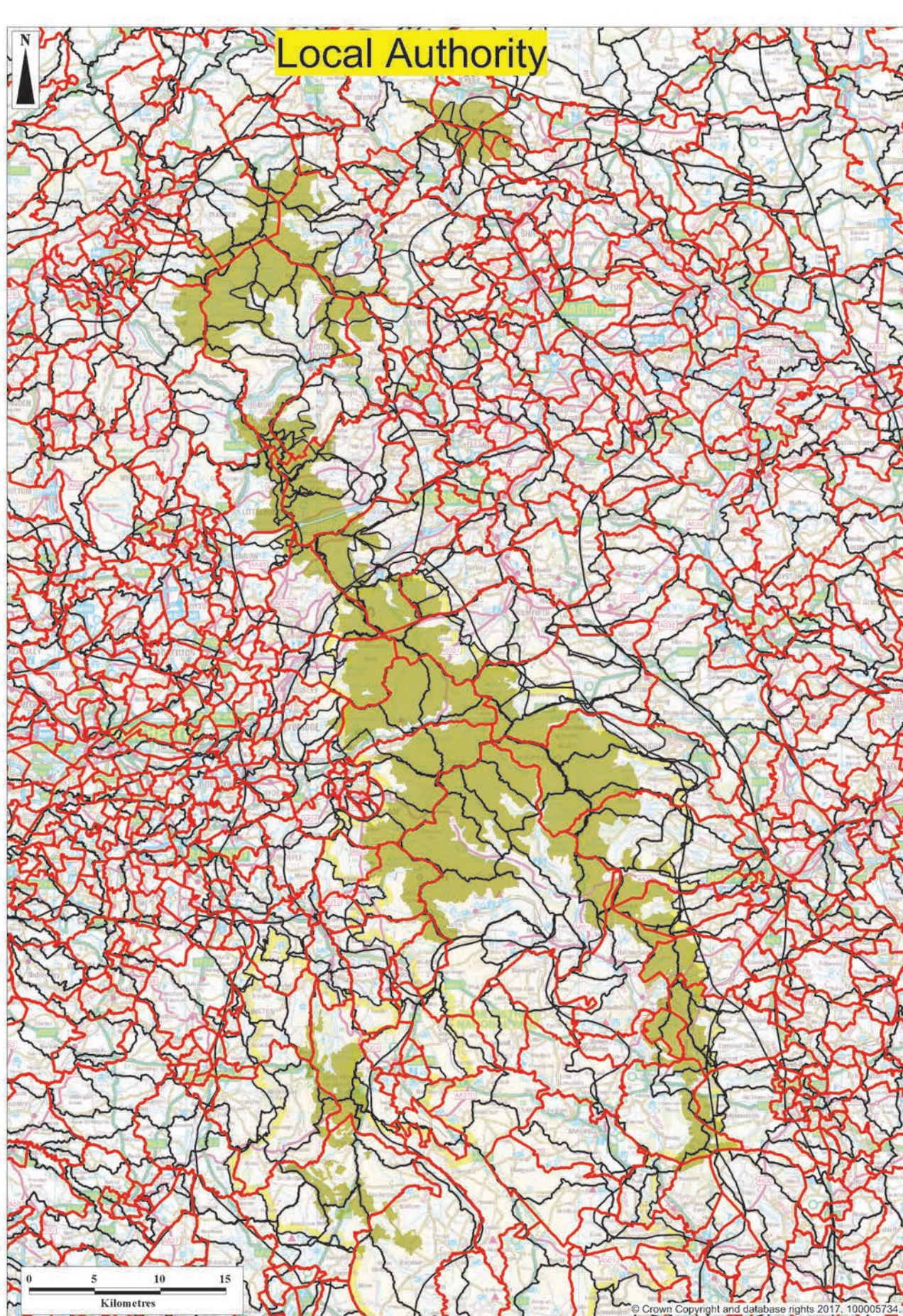
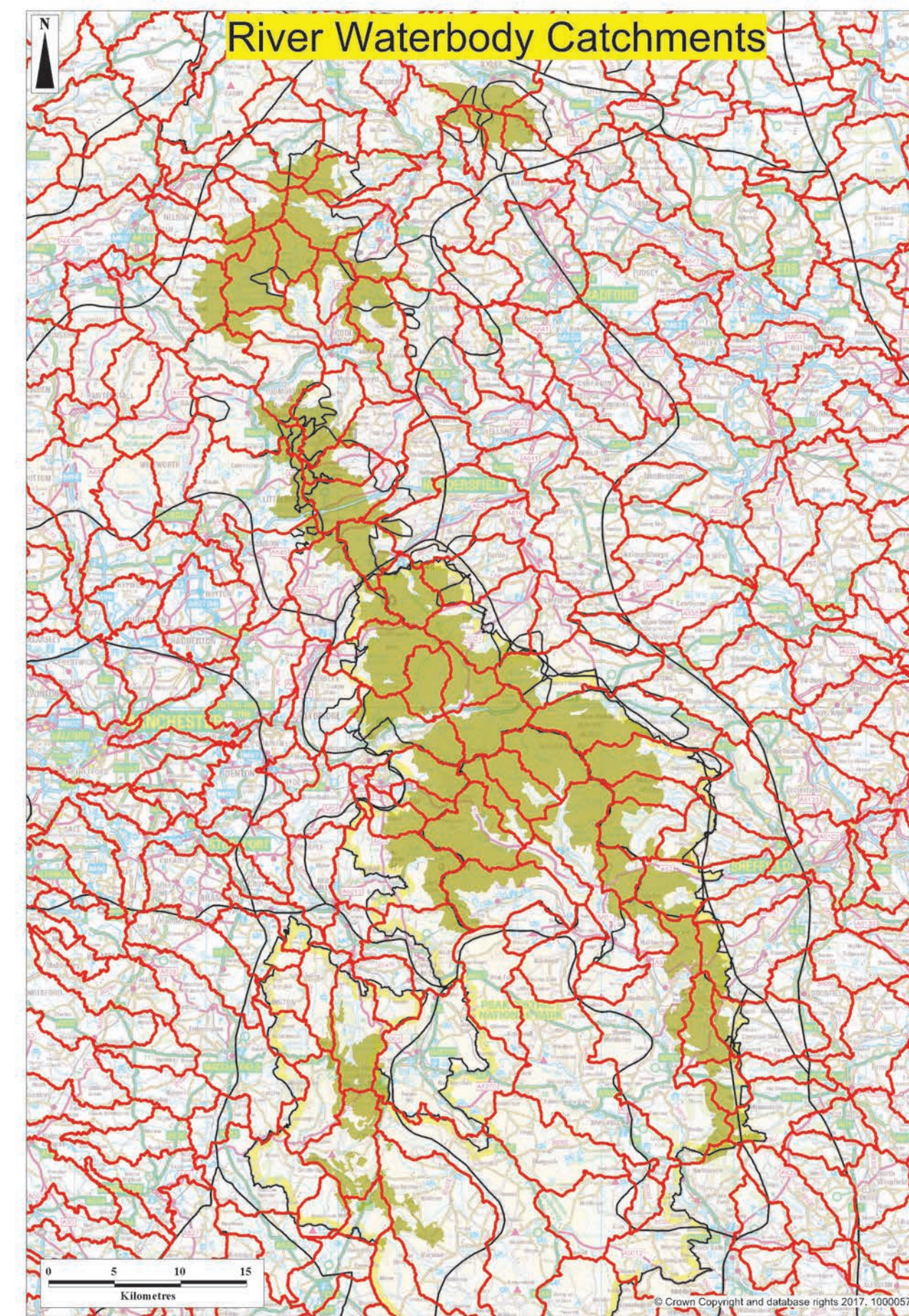
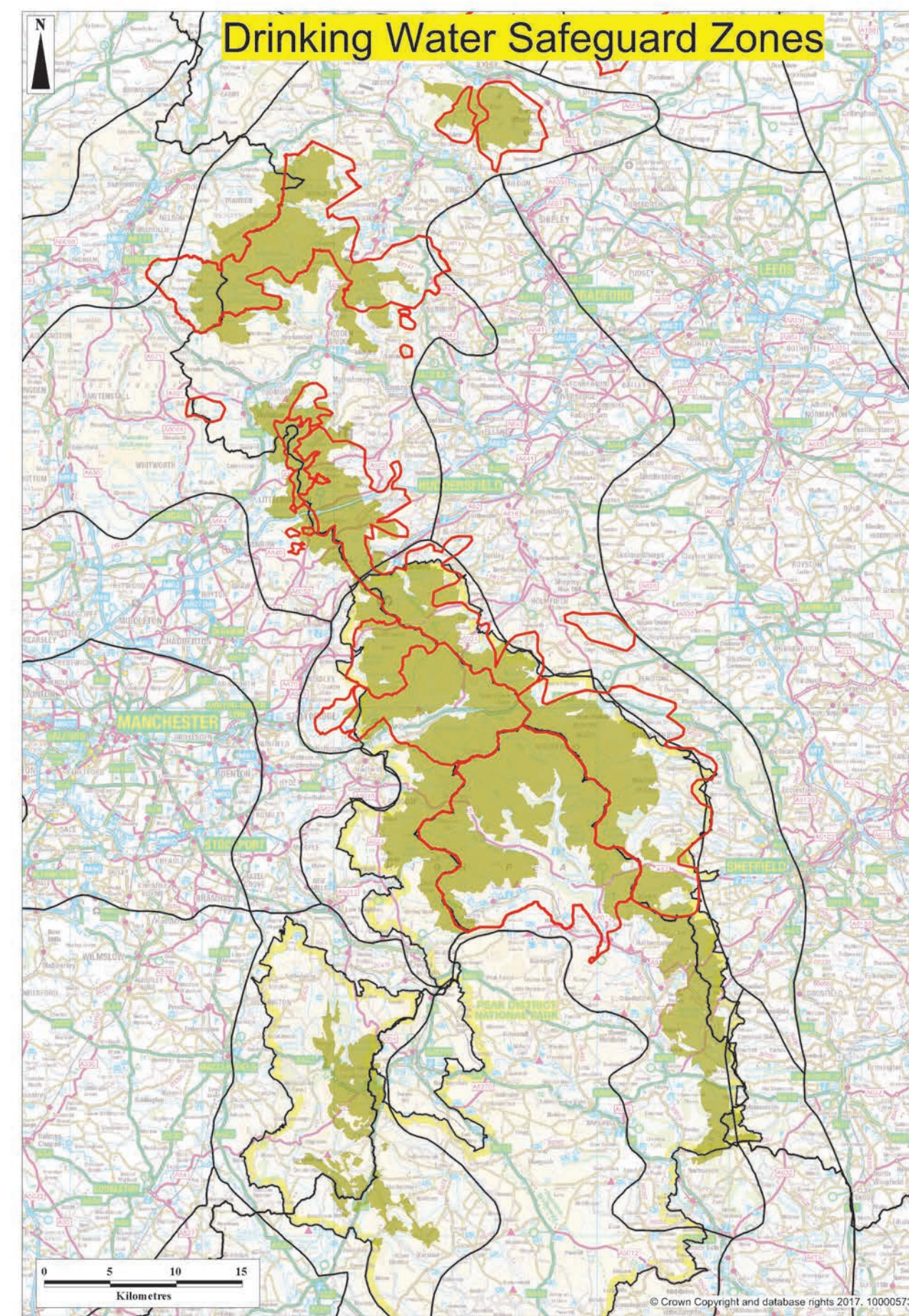
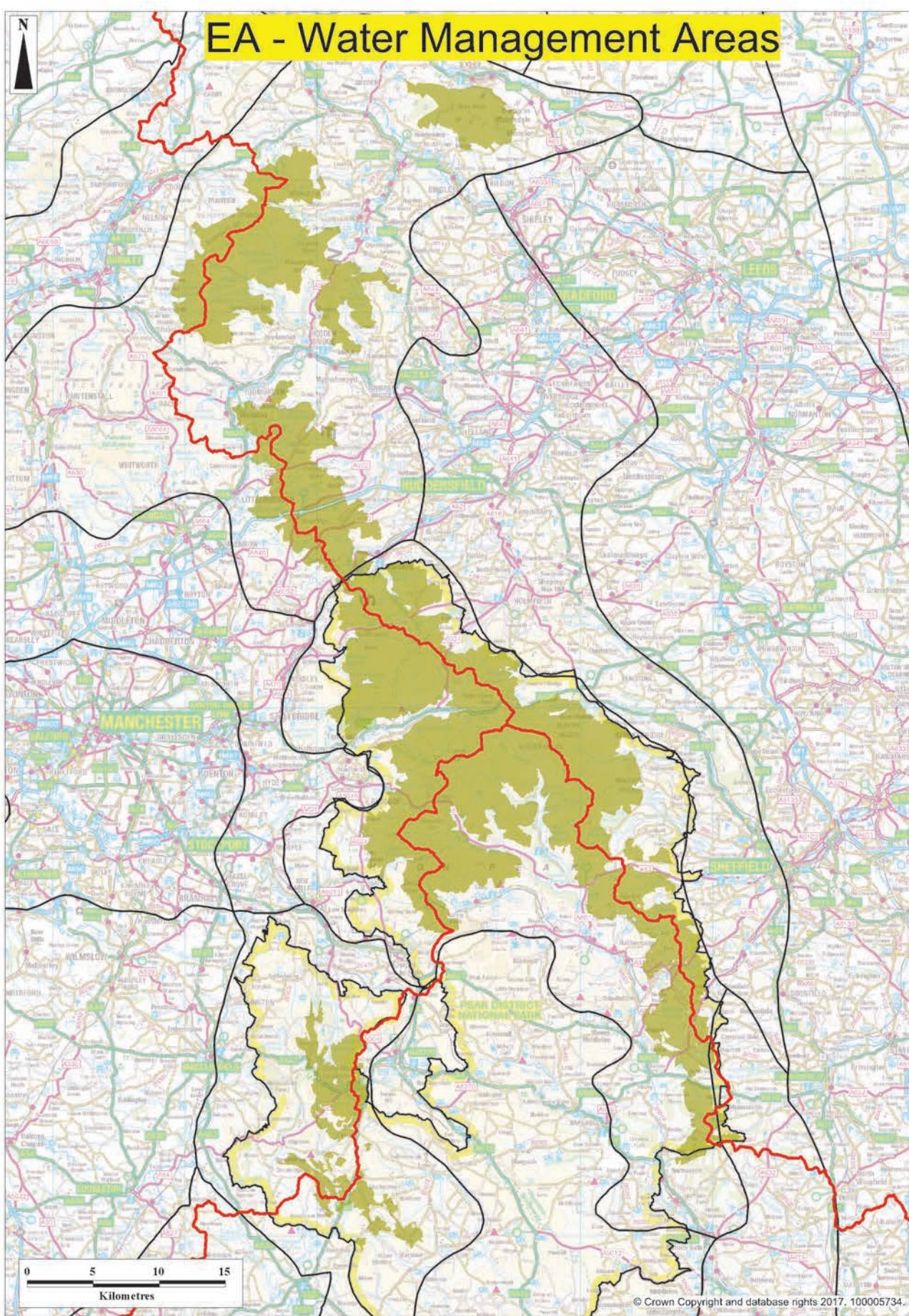
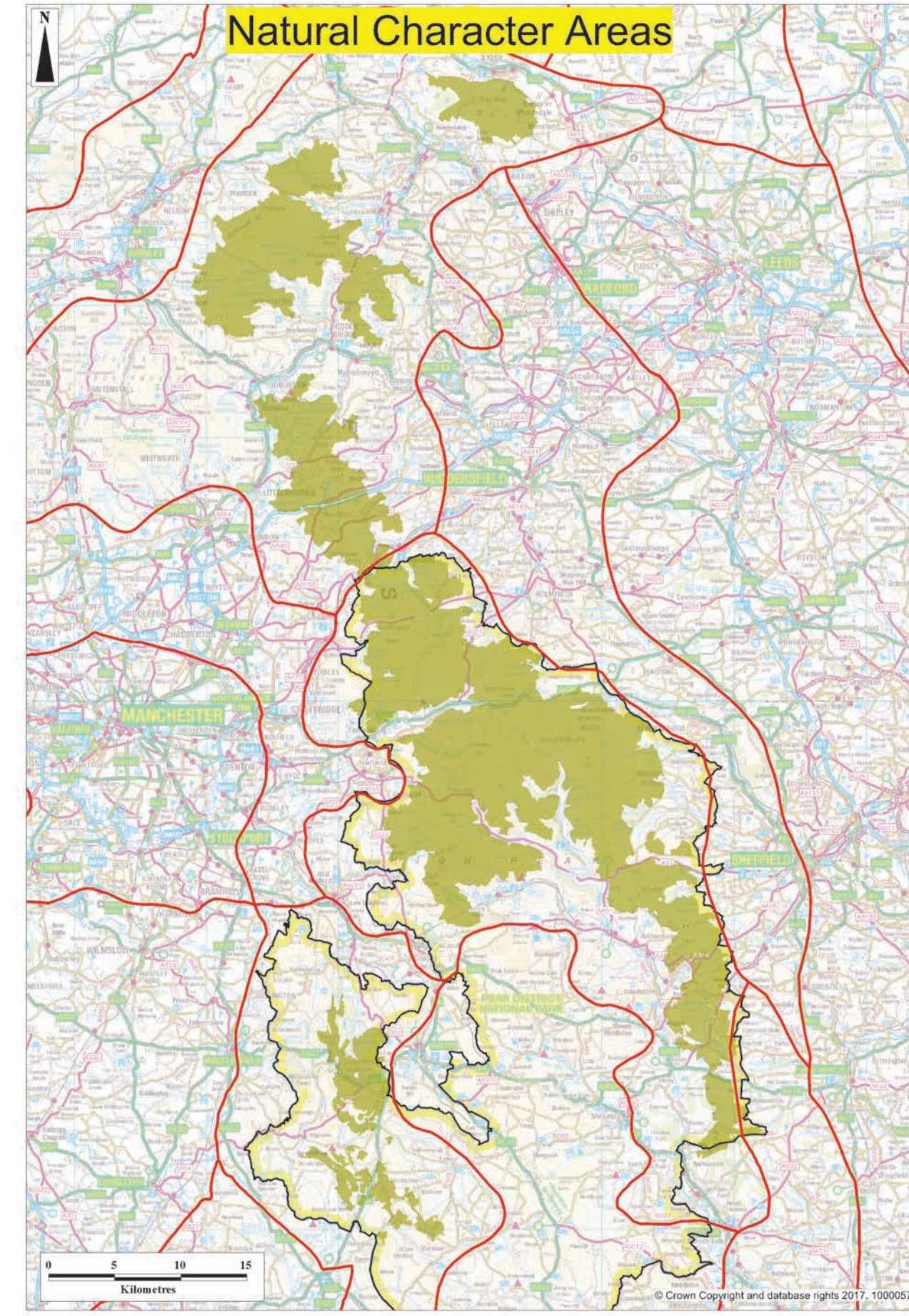
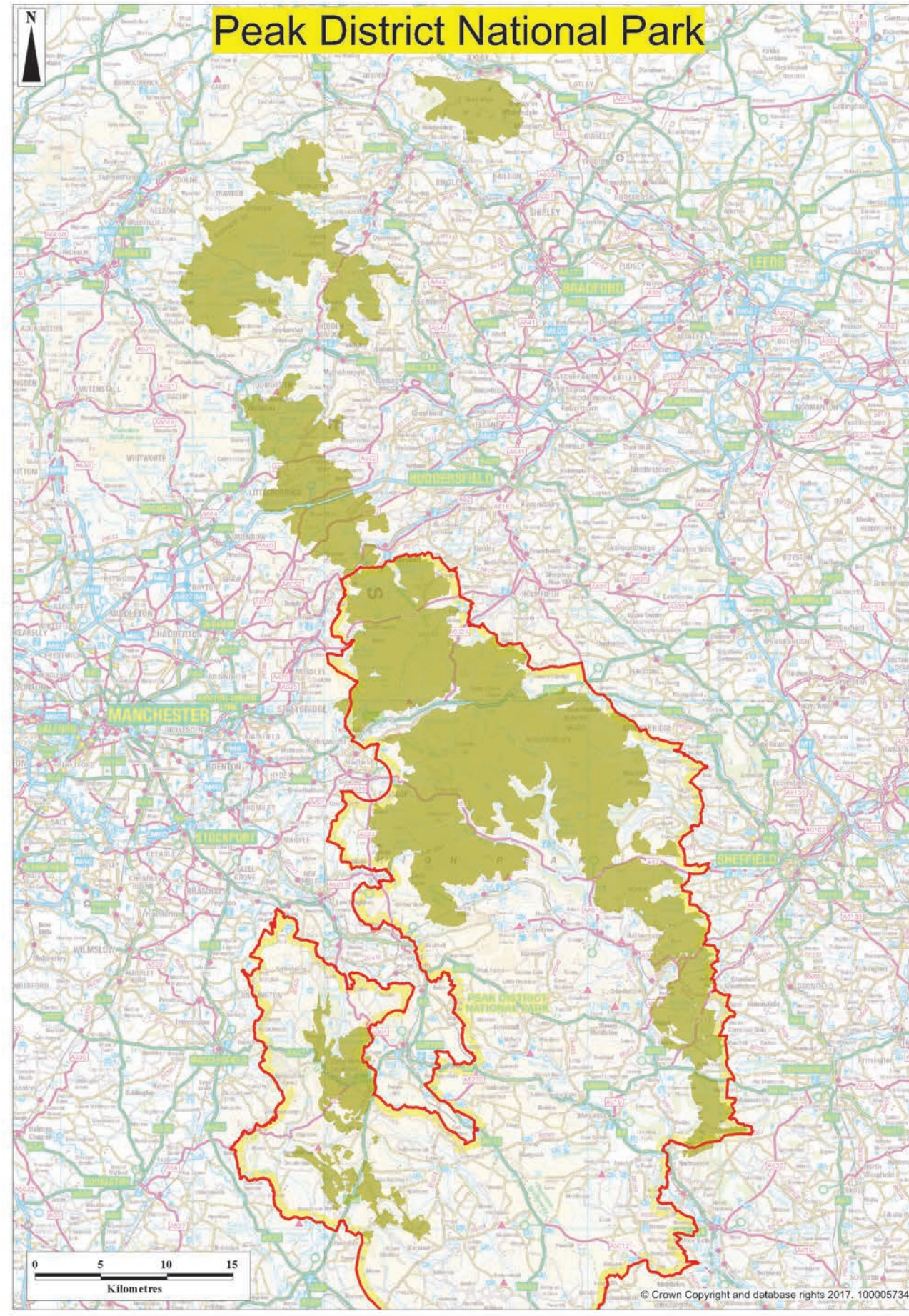
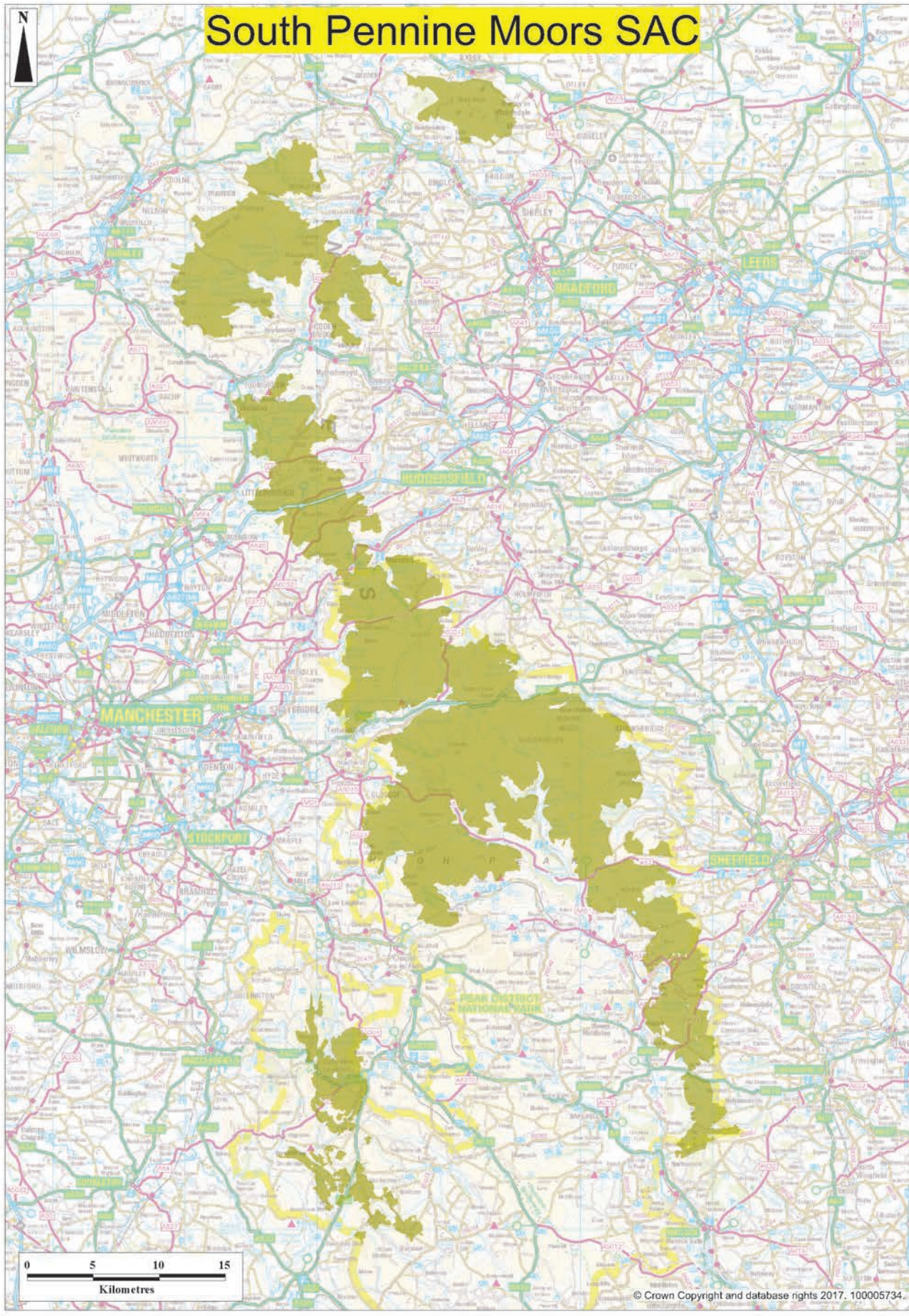




Mapping at a landscape-scale

The challenge of working across the multiple boundaries in the South Pennines Special Area for Conservation



Moors for the Future Partnership works across the South Pennines Special Area for Conservation, across multiple boundaries that include:

- 1 Special Area for Conservation
- 1 National Park Authority Area
- 4 Natural Character Areas
- 3 Environment Agency Water Areas
- 11 Drinking Water Safeguard Zones
- 88 River Waterbody Catchments
- 51 Local Authorities
- 249 Environmental Stewardship Scheme Agreements
- 779 Sites of Special Scientific Interest

Mapping these boundaries is only the start of the process.

The boundaries represent some of the different interests in the landholdings and the permissions that need to be sought from the different bodies before conservation and science works can take place.

Some more figures about these boundaries

The South Pennine Moors SAC: 648.2 Km²

Natural Character Areas: South West Peak, Dark Peak, Southern Pennines and Derbyshire Peak Fringe and Lower Derwent.

Environment Agency: North West, North East and Midlands

Drinking Water Safeguard Zones: these are areas of interest to Severn Trent Water, United Utilities and Yorkshire Water.

The 88 River Waterbody Catchments include the following Catchments:

- Aire and Calder
- Derwent Derbyshire
- Don and Rother
- Dove
- Ribble
- Upper Mersey
- Weaver and Gow
- Wharfe and Lower Ouse

Local Authority: Our working area is close to 3 major surrounding populations in the cities of Manchester, Leeds and Sheffield.

Contact us:

www.moorsforthefuture.org.uk

T: 01629 816581 or moors@peakdistrict.gov.uk

[@moorsforfuture](https://twitter.com/moorsforfuture) [Moors for the Future](https://www.facebook.com/moorsforfuture)



A Moors for the Future Partnership project in the EU designated South Pennine Moors Special Area of Conservation. Delivered by the Peak District National Park Authority as the lead and accountable body (the Coordinating Beneficiary). On the ground delivery is being undertaken largely by the Moors for the Future staff team with works also undertaken by the National Trust High Peak and Marsden Moor Estate, the RSPB Dove Stone team and Pennine Prospects (the Associated Beneficiaries). Funded by the EU LIFE programme and co-financed by Severn Trent Water, Yorkshire Water and United Utilities. With advice and regulation from Natural England and the Environment Agency, and local advice from landowners.

