



Department
for Environment
Food & Rural Affairs

ENGLAND PEAT STRATEGY UPDATE

Sophie Chapman

Head of Soils & Peatlands Policy, Defra



Forestry Commission
England



Environment
Agency

Overview – England's Peatlands



Only 13% of England's peatlands are in a near natural state.

Our degraded peat is releasing 11 million CO₂e

England has 25% of UK peat but is responsible for 50% of the CO₂e

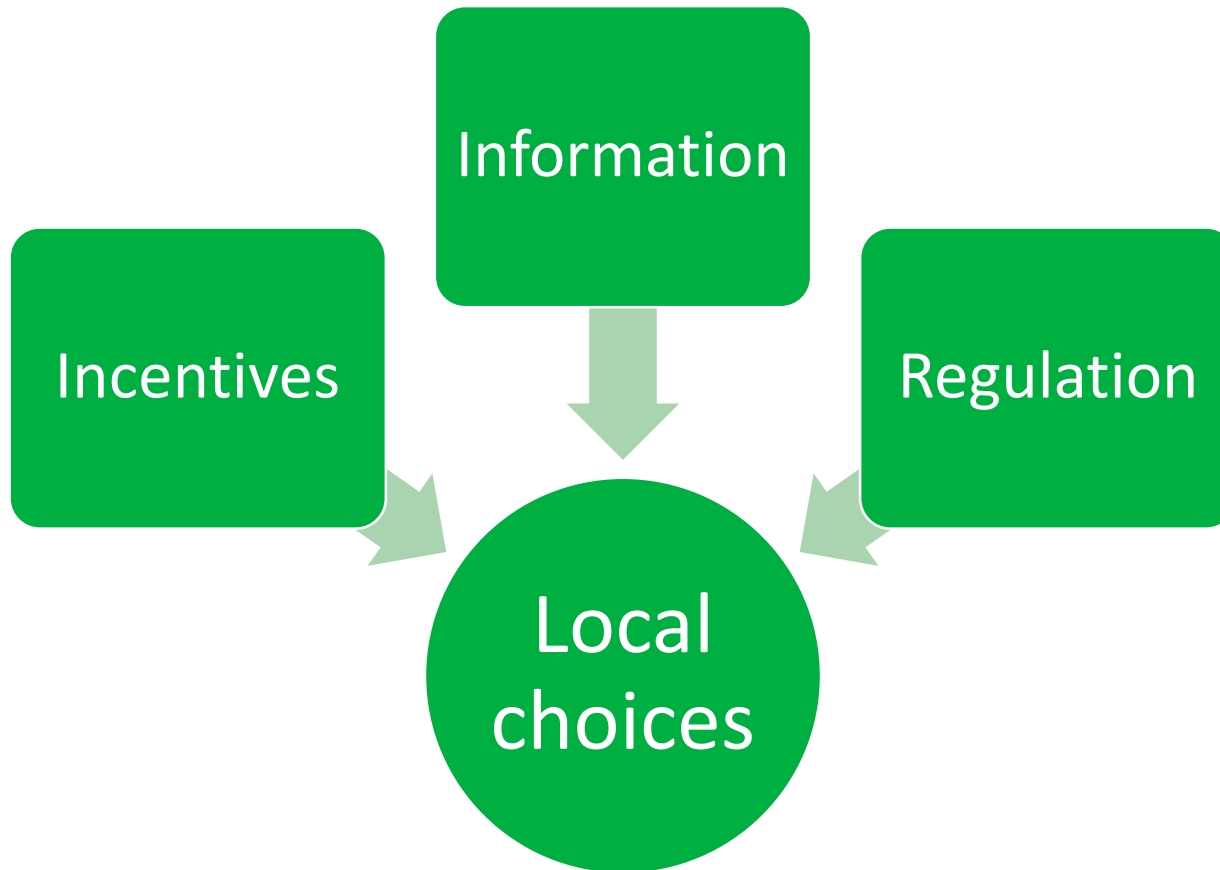
86% of England's emissions come from the agricultural lowlands

Developing the England Peat Strategy

- Our ambition - **Protecting and enhancing our peatland to meet the needs of wildlife, people and planet:**
 - Securing our peatland's carbon store
 - Peatland habitats functioning healthily and rich in wildlife – as part of the Nature Recovery Network
 - Phasing out use in horticulture
 - Protecting peat from fire
 - Manage for water regulation
- Maximise the natural capital from our peat - but recognise many rely on our peatland for their livelihood.
- Strategy aims to surface and resolve these tensions through applying a **systematic approach**, which we are piloting in five areas.

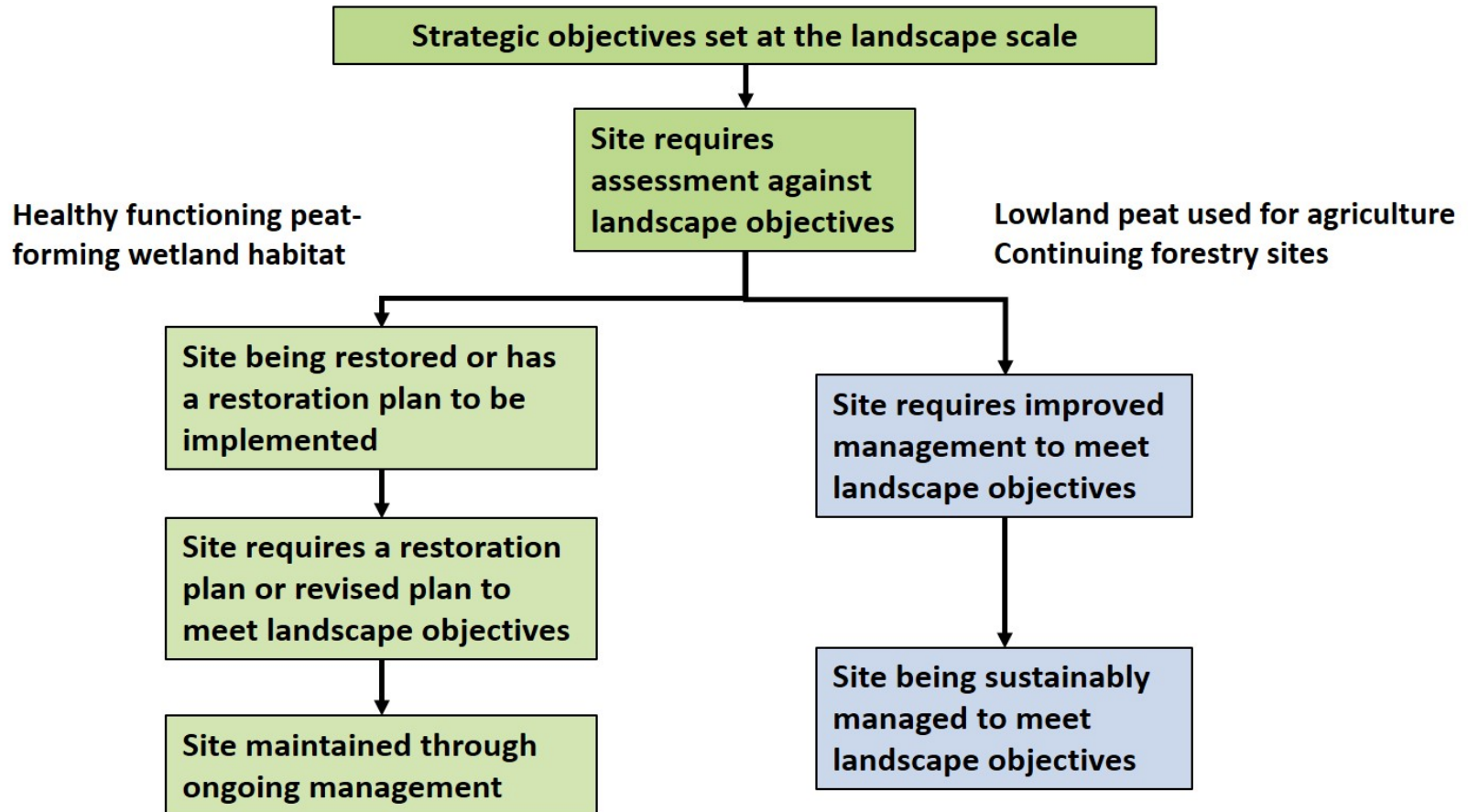
Developing the England Peat Strategy

We will provide a national framework but choices will need to be made at a local level



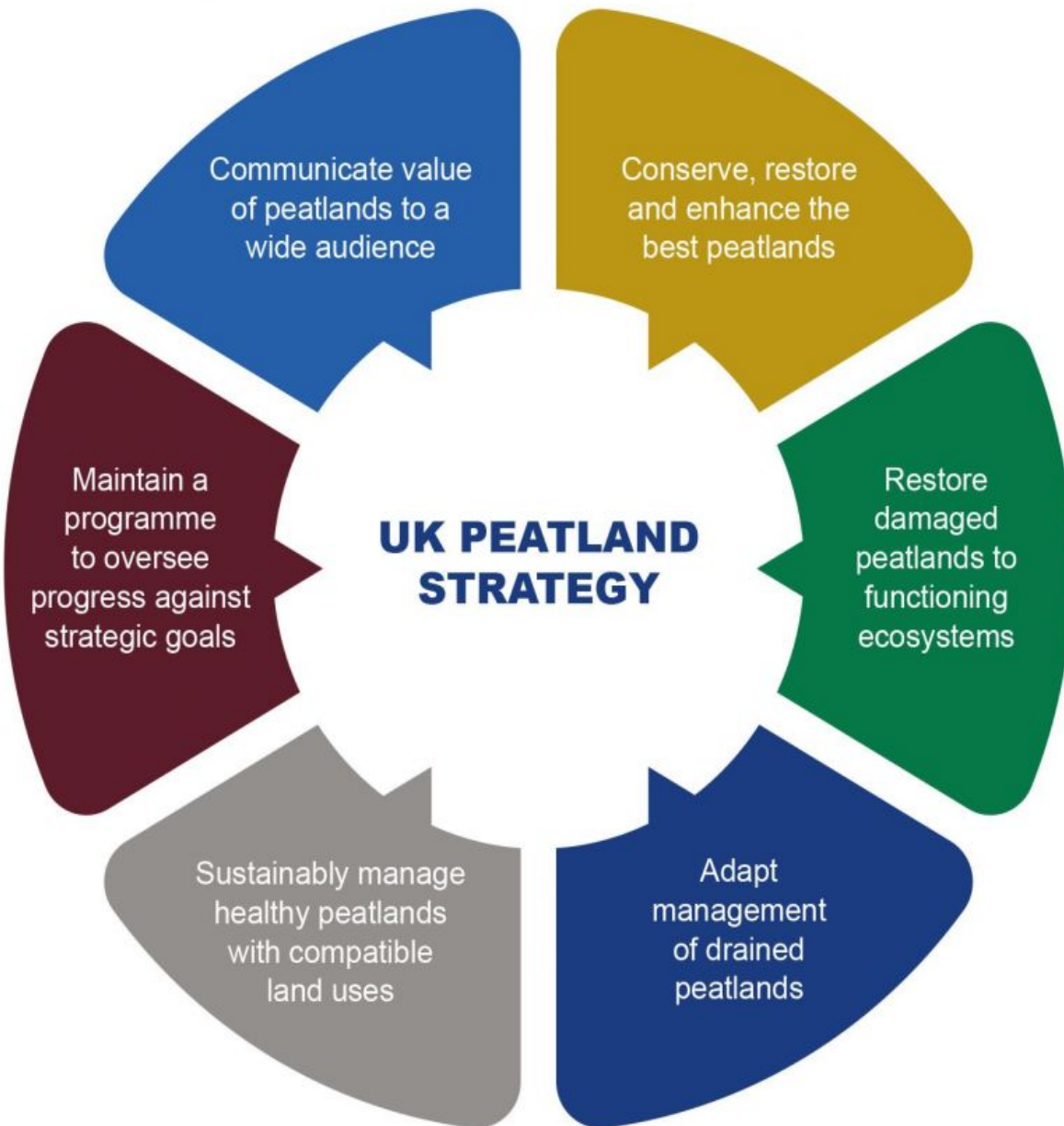
Developing the England Peat Strategy

Surface and resolve these tensions through applying a systematic approach, which we are piloting in five areas.



Developing the England Peat Strategy

- **NE pilots:** North York Moors, Manchester Pioneer, The Fens, Border Mires, Dartmoor
- **Tools** to assist local decision making:
 - Baseline map,
 - New classification scheme,
 - New trajectories,
 - Register of peat restoration projects,
 - Innovative research
- **Lowland Agricultural Peat Taskforce**
- **Funding**



England Peatland Strategy aims to meet these goals by:

Develop targets to ensure we restore our peatlands and are held to account

Developing alternative sustainable management approaches

Developing peatland infrastructure and programme to oversee implementation