



# ***Restoring Northern Ireland's Peatlands***

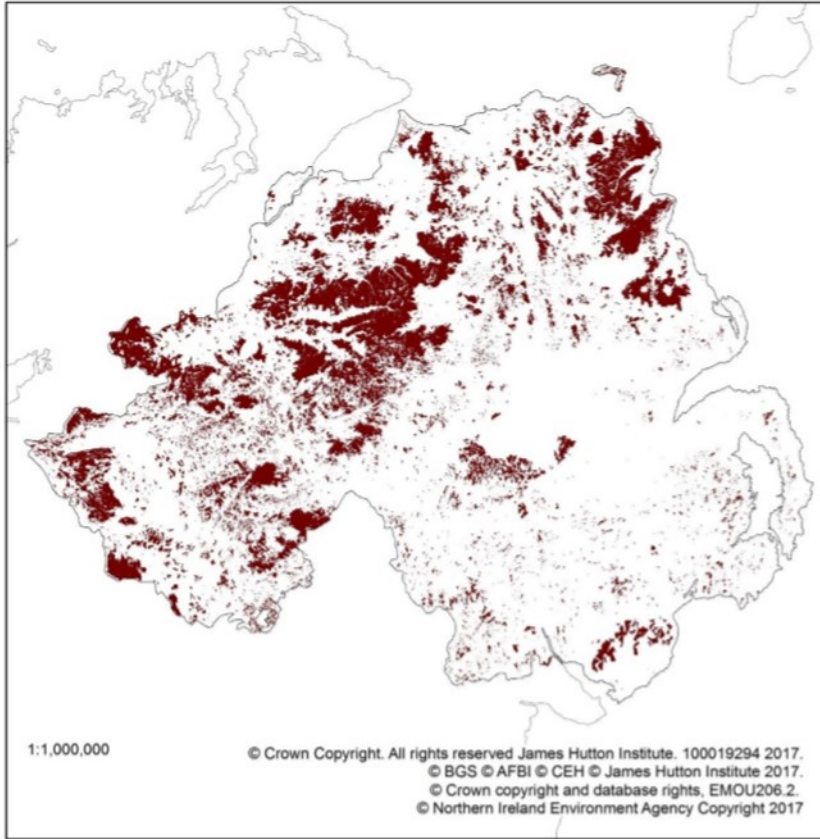
**Dr Sara McGuckin**  
**Head of Natural Science**  
**NIEA Natural Environment Division**

IUCN UK Peatland Programme Conference  
1 October 2019

---

*A living, working, active landscape valued by everyone.*

# Northern Ireland's Peatlands



- ❖ Area of peatland: 242,622 ha
- ❖ 18% of NI land cover is peatland
- ❖ 12% of NI - blanket bog, raised bog and fen
- ❖ Over 8% of total UK peatland resource

<b>Biodiversity</b>	<b>Cultural History</b>
<b>Carbon Storage</b>	<b>Grazing</b>
<b>Flood alleviation</b>	<b>Water Quality</b>
	<b>Recreation</b>

*A living, working, active landscape valued by everyone.*

# NI Peatland habitats – Pressures & Threats



- ❖ 12% of NI peatlands designated
- ❖ Annex 1 habitat: *Unfavourable - Bad*
- ❖ Majority of peatlands in unfavourable condition, degraded or modified

*Climate Change Committee/CEH estimate that Northern Ireland's peatlands will add 10% to current GHG emissions (1.9 MtCO<sub>2</sub>e/yr)*

*A living, working, active landscape valued by everyone.*



# Progress to date....

Living Maps Project

DAERA  
Environment Funded Projects

Development of  
Northern Ireland Peatland Strategy &  
Peatland Programme

Development of Ammonia Action Plan



SAC Conservation  
Management Plans

INTERREG Va –  
mapping, plans, action

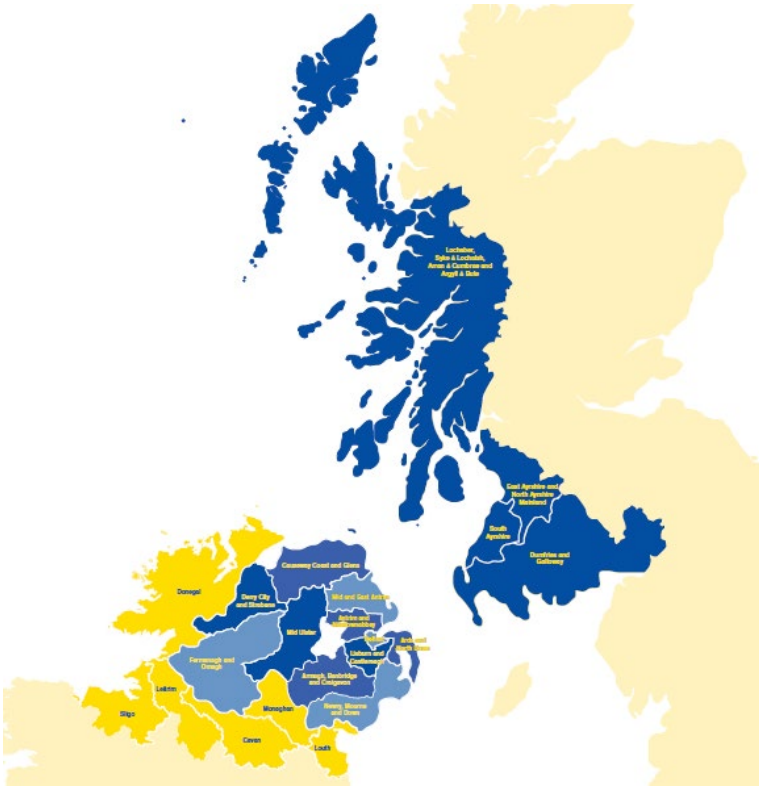
NI Wildfire  
Stakeholder Partnership

Environmental  
Farming  
Scheme

Pilot Peatland Restoration Projects

Pressures &  
threats analysis

*A living, working, active landscape valued by everyone.*



**Priority Species** - Hen Harrier, Marsh Fritillary, White-clawed crayfish, Breeding waders (curlew, lapwing, redshank, snipe), Golden plover, Corncrake, Red grouse.

Output: 25 conservation action plans

**NI EA** | Northern Ireland  
**Environment**  
Agency  
[www.daera-ni.gov.uk](http://www.daera-ni.gov.uk)

# Collaborative Action for the Natura Network

- 25 Conservation Action Plans
- 3000+ha of restoration planned to help move sites towards favourable conservation status.
- Stakeholder engagement and consultation



Comhairle Ceantair  
an Iúir, Mhúrn  
agus an Dúin  
**Newry, Mourne  
and Down**  
District Council



*A living, working, active landscape valued by everyone.*







Cuilcagh: S Gray



Garry Bog - Raised bog  
T Fox



Ballynahone - Raised bog  
T Fox

---

*A living, working, active landscape valued by everyone.*





Slieve Beagh SAC –  
cross-border site



Tackling the Rhody – Tully Bog  
T Fox

Stereoscopic imagery (SNH) for mapping  
large remote areas

*A living, working, active landscape valued by everyone.*



# CABB - Co-operation Across Borders for Biodiversity

- 8 Conservation Action Plans
- Deliver works to support 2228ha to attain better conservation status
- Tangible works for priority species – march fritillary, breeding waders, hen harrier



Butterfly  
Conservation



*A living, working, active landscape valued by everyone.*



# CABB



Restoration works at the Garron Plateau



Sharing best practice



*A living, working, active landscape valued by everyone.*





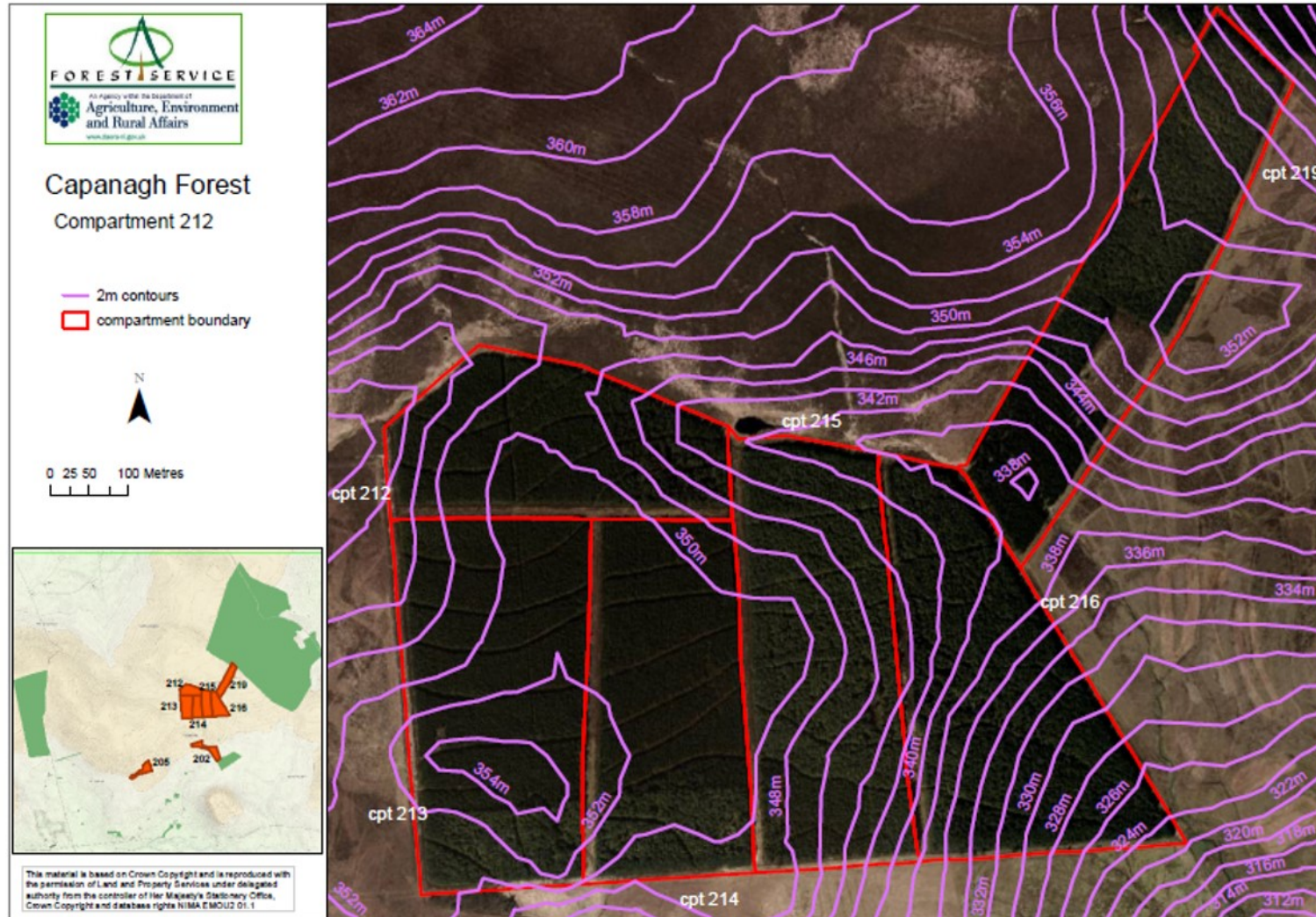
*A living, working, active landscape valued by everyone.*



# Glenwherry Peatland Restoration Project (CAFRE/Forest Service)

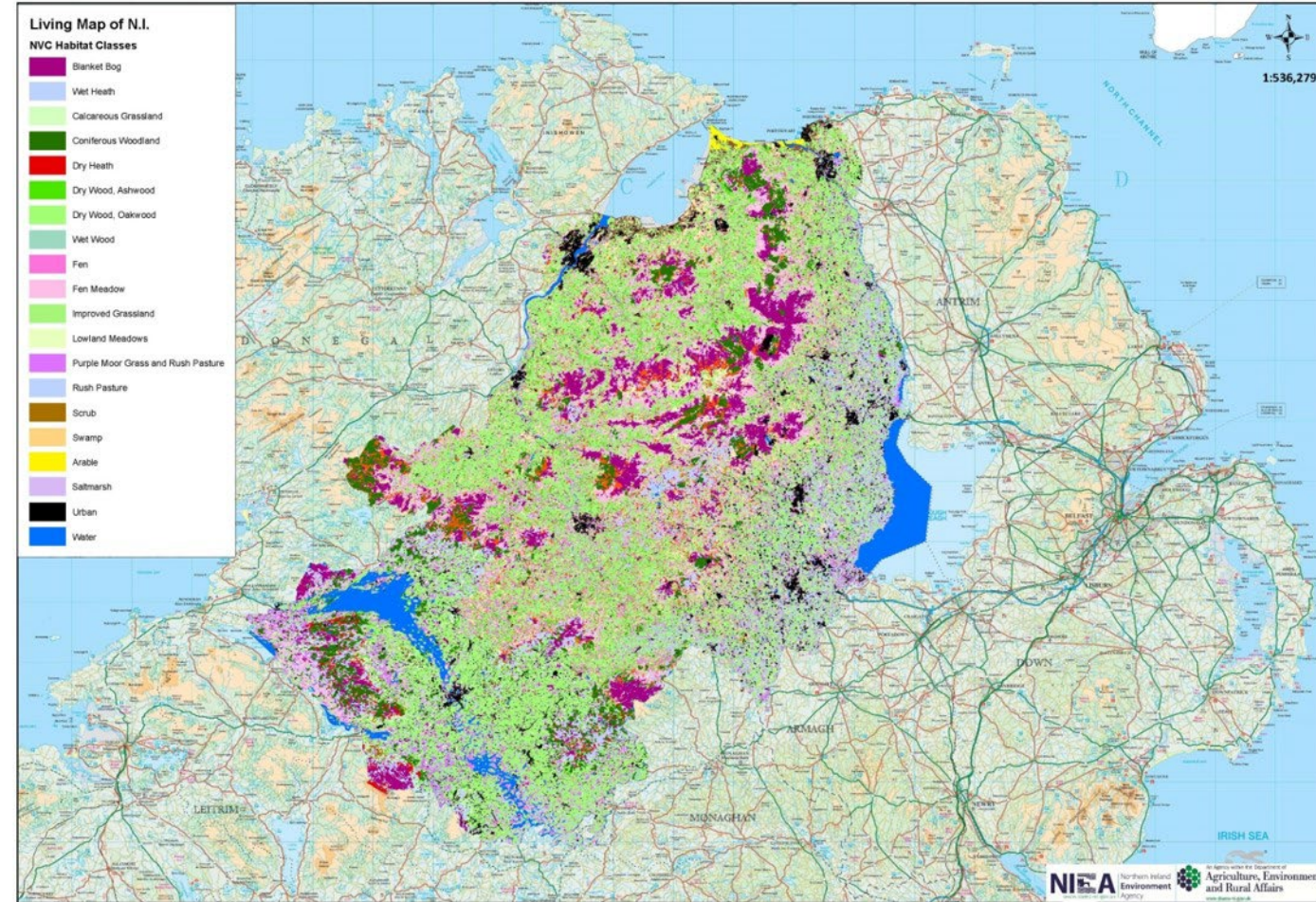
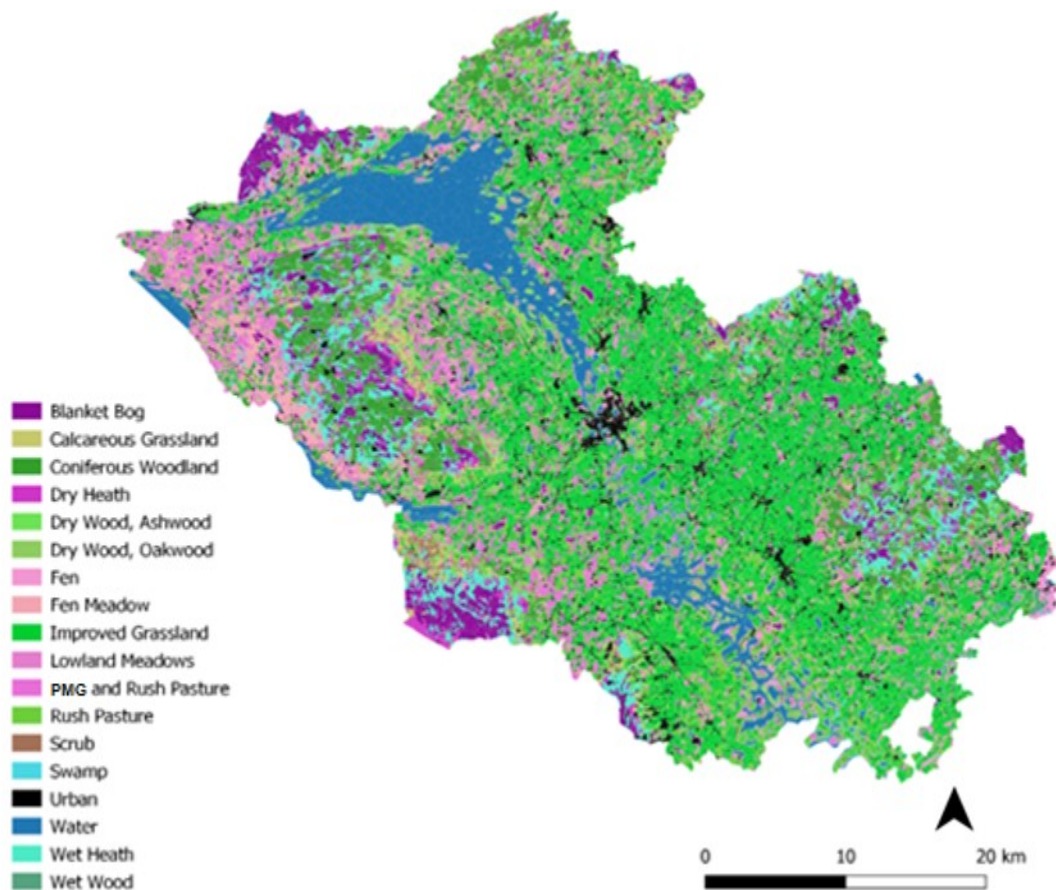
## Glenwherry Hill Farm (Antrim Hills SPA)

Two blocks of conifer woodland totalling 60ha's planted to be restored to active blanket bog during 2020 and 2021.





# Living Map of Northern Ireland: Applied use of Satellite Data



*A living, working, active landscape valued by everyone.*

# Underway.....

- ✓ Complete SAC management plans
- ✓ Development of NI Peatland Strategy – consultation 2020
- ✓ Developing peatland programme and partnerships
- ✓ Engagement with stakeholders and other agencies
- ✓ Exploring funding opportunities for peatland restoration
- ✓ Scoping pilot projects for biodiversity, carbon storage, water quality and flood alleviation

---

*A living, working, active landscape valued by everyone.*





*Thank you*

---

*A living, working, active landscape valued by everyone.*