

Natural Capital and peatlands



Bruce Wilson
Public Affairs Manager

scottishwildlifetrust.org.uk



What *is* natural capital?

The earth's stock of natural assets - including forests, rivers, land, minerals and oceans - that supply us with essential goods (such as food, medicine, fuel and building materials) and services (such as pollination, climate regulation and flood protection) on which all human life depends

Source: World Forum on Natural Capital

What *is* natural capital accounting?

The systematic measurement, valuation, recording and analysis of information relating to impacts and dependencies on natural capital

Source: World Forum on Natural Capital



World Forum on
Natural Capital
EDINBURGH · 2015

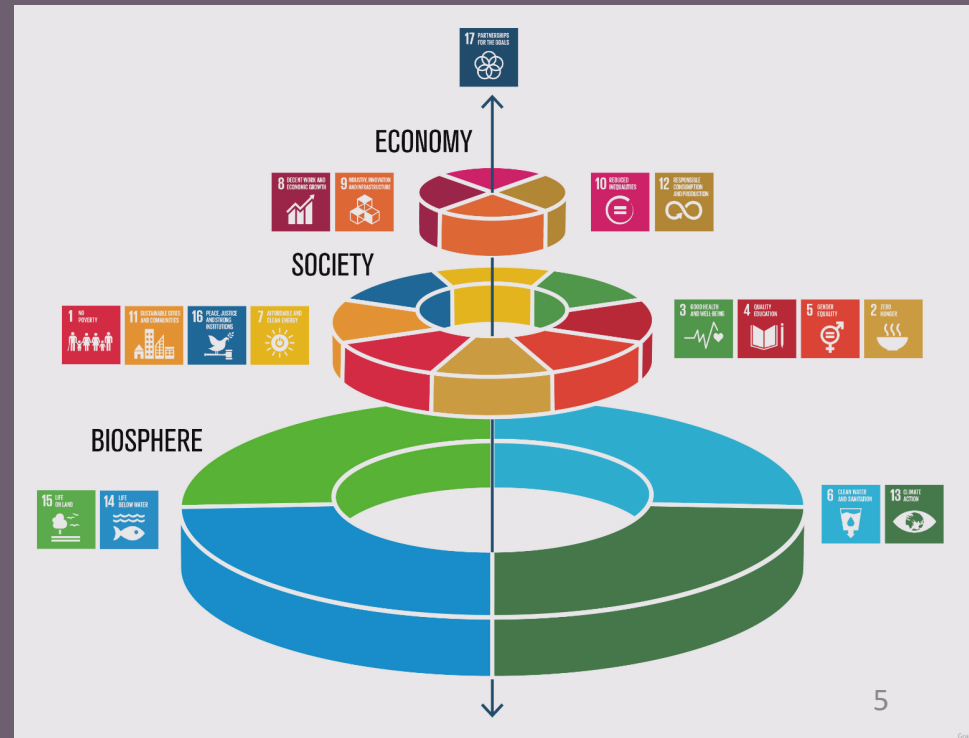
World Forum on
Natural Capital
EDINBURGH · 2015



Why is it important?

“There needn’t be a tension between protecting the environment and our natural capital and growing the economy, they are two sides of the same coin”

– Nicola Sturgeon, First Minister of Scotland



How can it be utilised?

Public Sector

- Policy appraisal
- To monitor natural capital assets
- Inform priority areas for investment
- Highlight links with economic activity

Private Sector

- Identify impacts and dependencies
- Understand true value of natural assets
- Attract investment
- Inform reporting and PR strategies



PEATLANDC^oDE





Scotland *noun* nation of spectacular wildlife including red squirrels, golden eagles, dolphins and Caledonian pine forest. The Scottish Wildlife Trust has fought to protect Scotland's wildlife for nearly 50 years and provides safe havens for wildlife on over 120 reserves.

**If you love Scotland, join the
Scottish Wildlife Trust today.**

