



# Peat Bunding on Lowland Mires in North Cumbria

Emma Austin Senior Reserves Manager  
North Cumbria National Nature Reserves



### Map Title

Key

Contains, or is derived from, information supplied by Ordnance Survey. © Crown copyright and database rights 2022. Ordnance Survey 100022021.



Map Produced from WebMap2 on 30/09/22

Map Projection: British National Grid

Map Scale at A4: 1:1,527,643





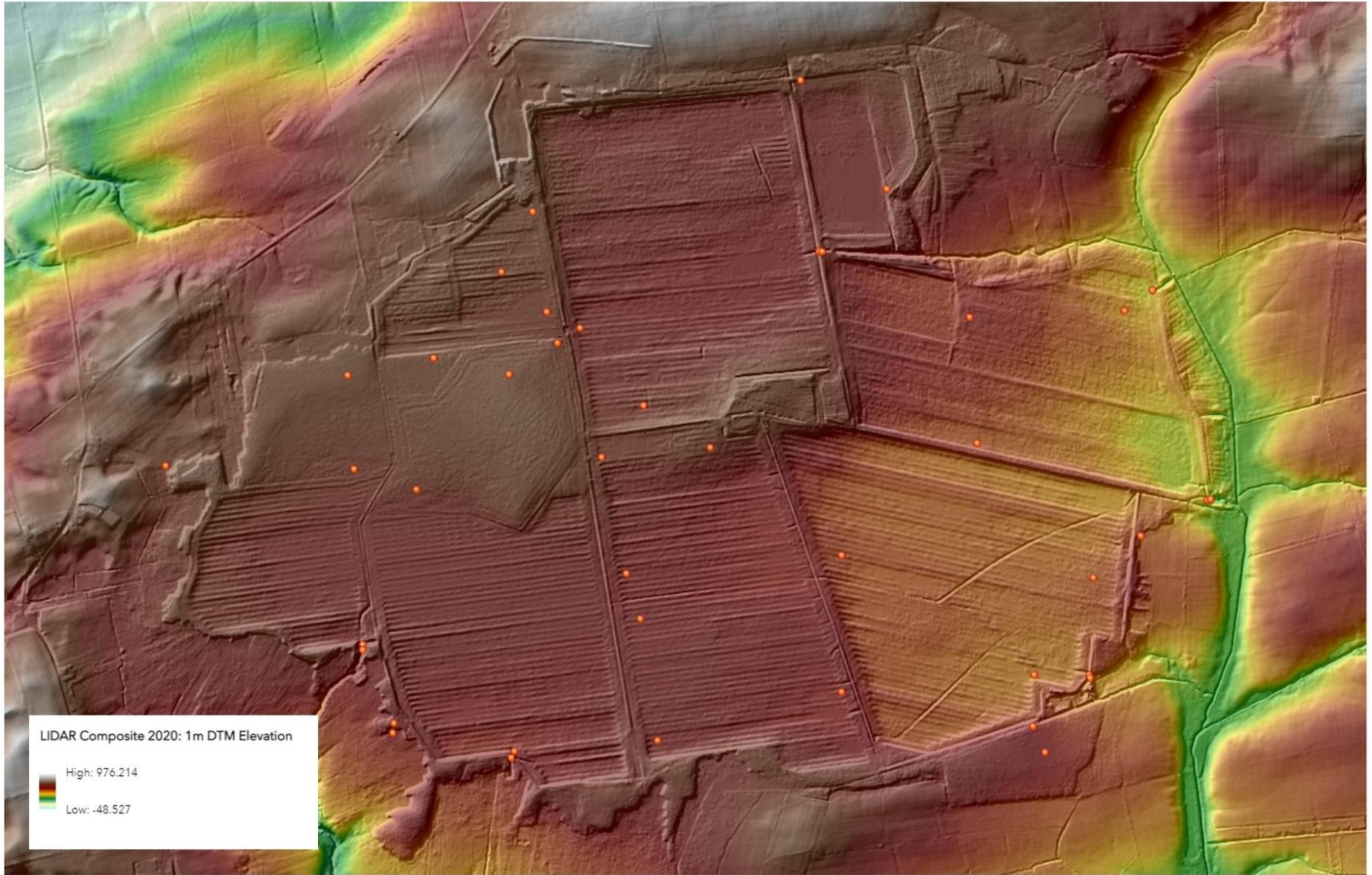










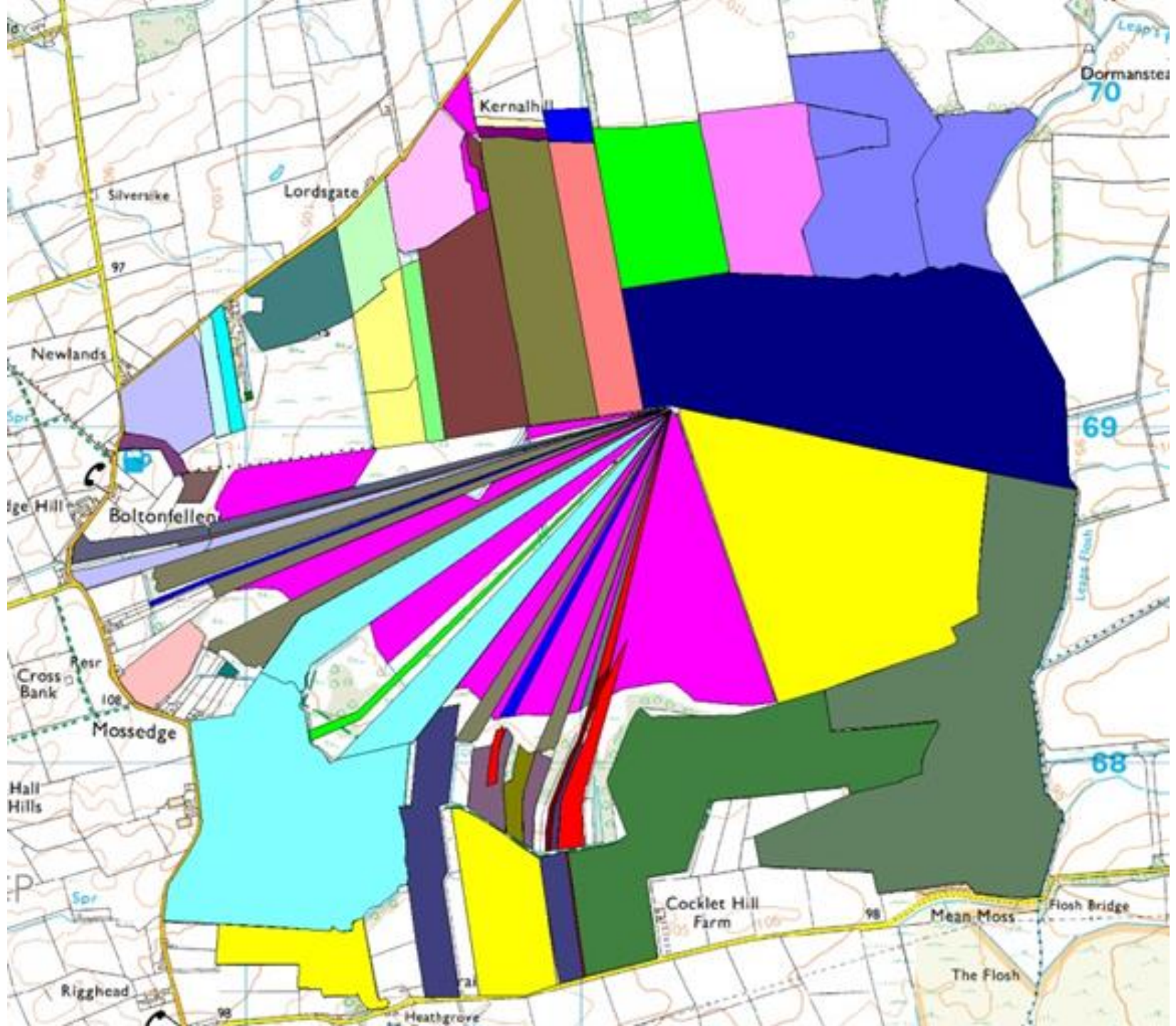


LIDAR Composite 2020: 1m DTM Elevation

High: 976.214





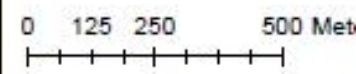
Low: -48.527





### Legend

-  Sites of Special Scientific Interest
-  Special Areas of Conservation



Map produced by A Broome  
Solway & West Coast, Ltd  
Date: 19.04.2015. Map Ref: [unreadable]  
Contains, or is derived from,  
data supplied by Ordnance Survey  
© Crown copyright and database right  
Ordnance Survey 100020150









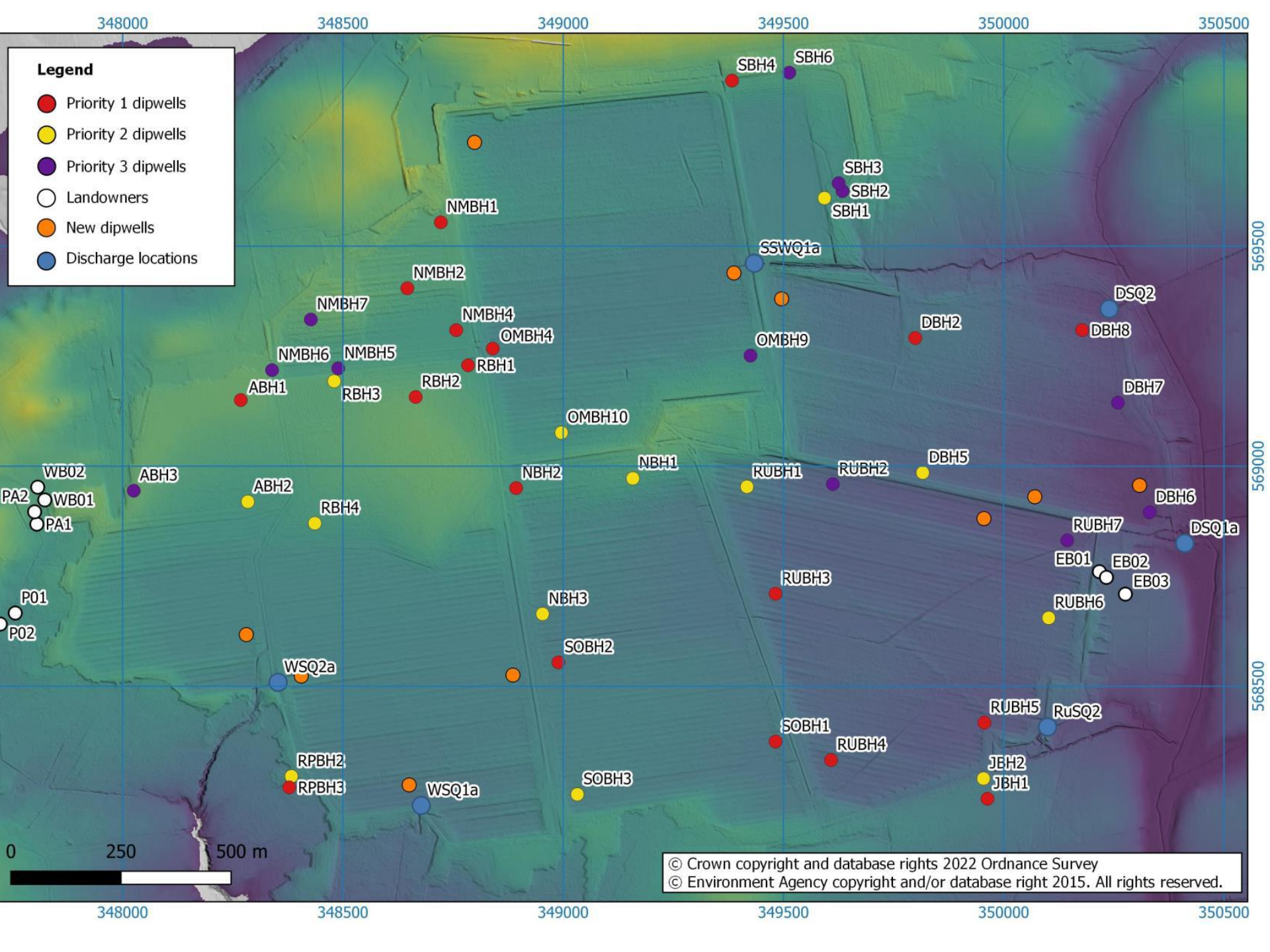


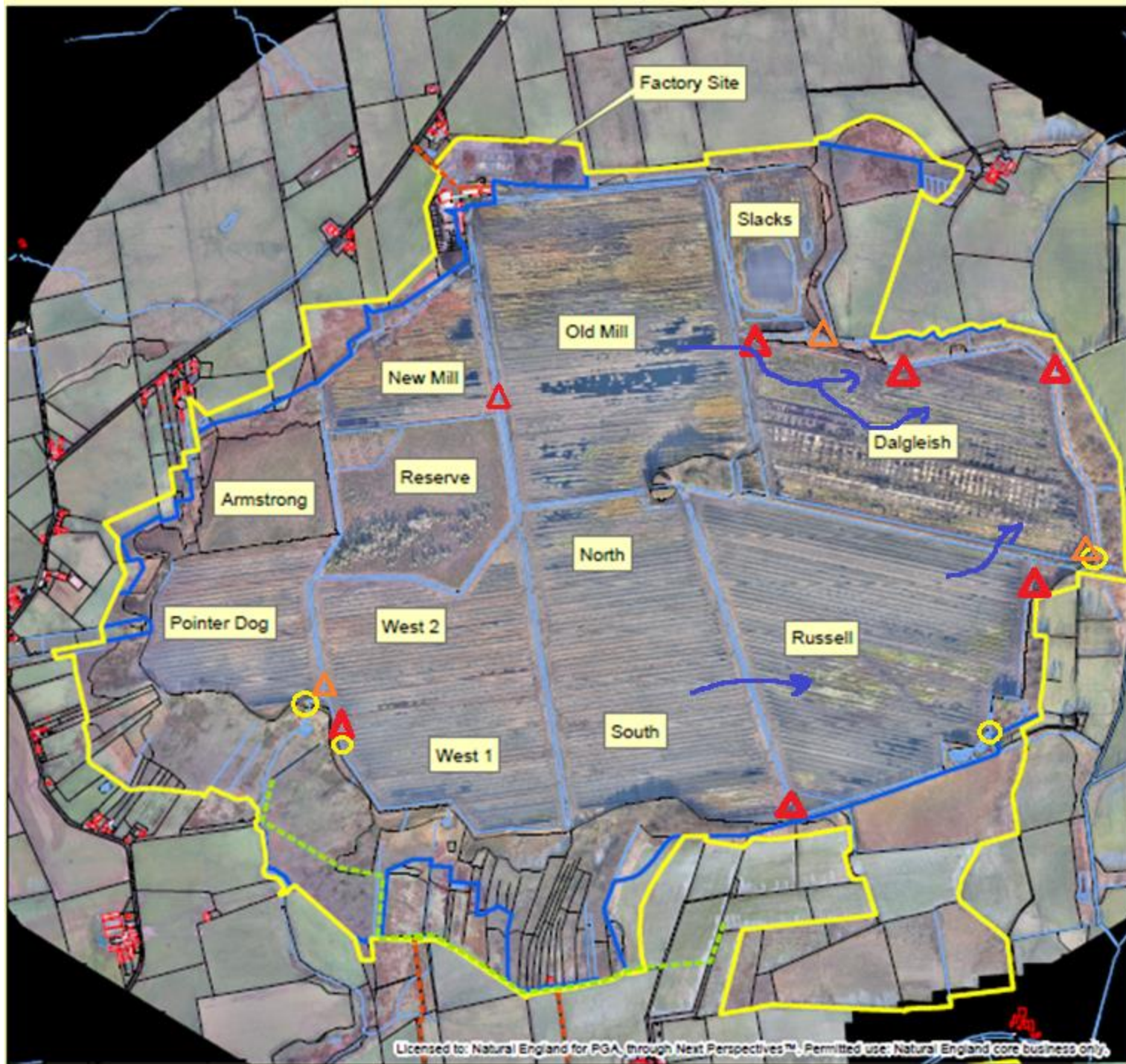
























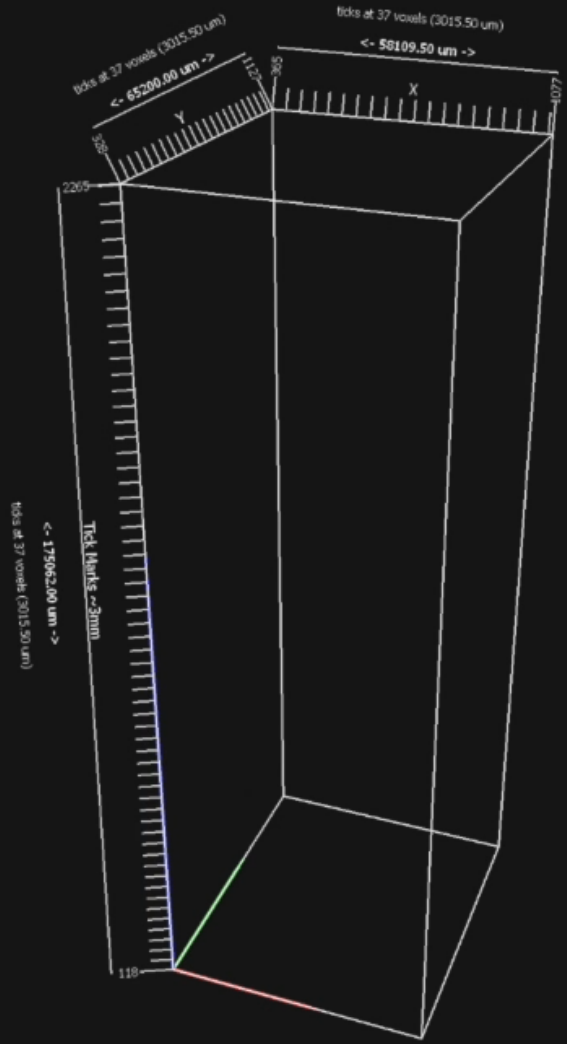
# Visualization of pores and organics

Using recent methods from medical and agricultural science, we developed a workflow that uses the X-Ray attenuation contrast (~relative densities) and shape detection algorithms to distinguish the pores, roots and other organics from the sediment matrix. Differences in sediment types and vegetation cover have a direct impact on subsurface structures. We will draw links between these different structures and differences in marsh functioning.



Navigation and interaction controls: mouse cursor, hand icon, zoom in (+) and zoom out (-) buttons, 74.1% zoom level, copy icon, crop icon, pan icon, and share icon.





















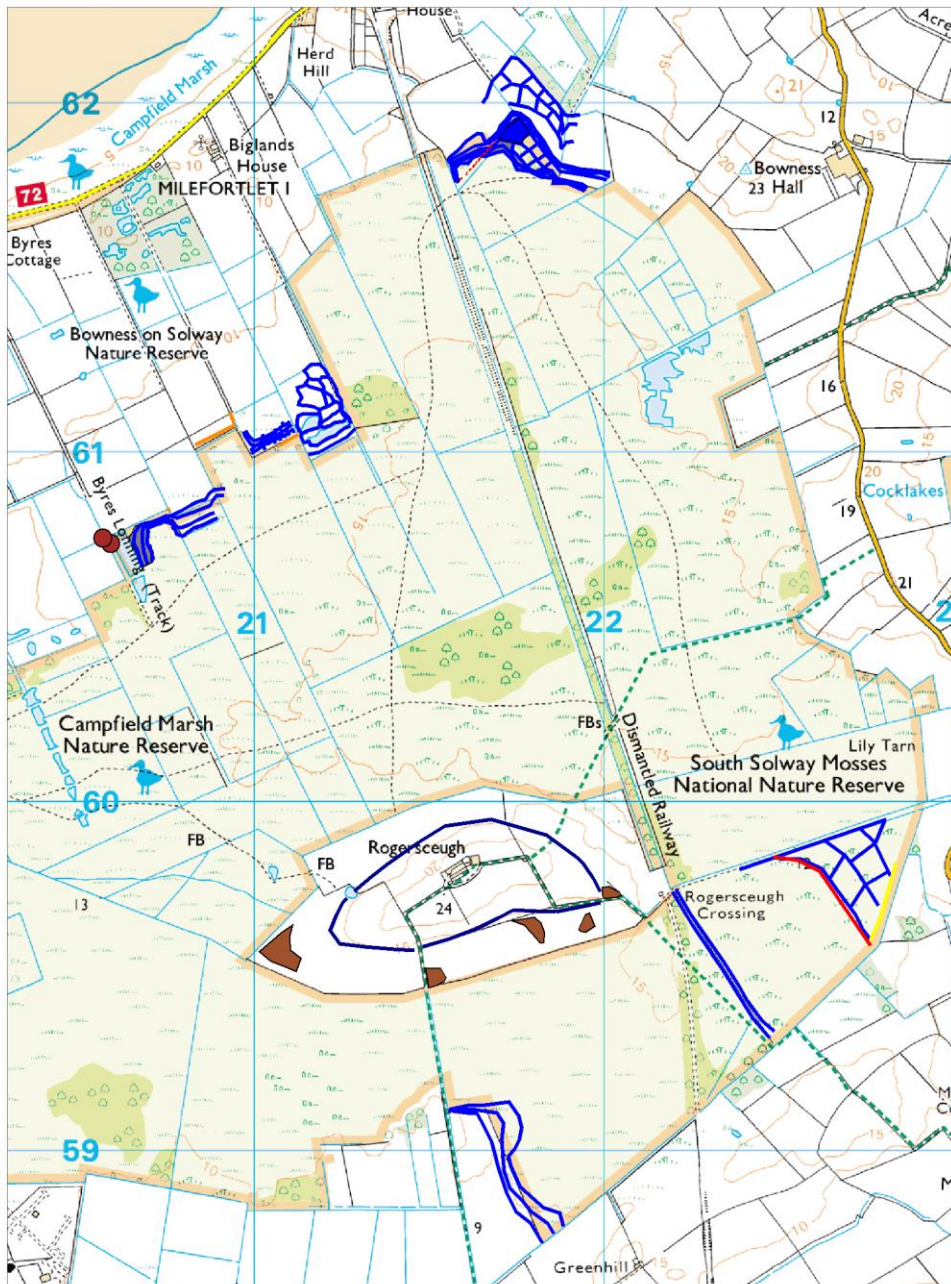




13 11 2014 11 34







<p><b>Location of works -</b></p> <ul style="list-style-type: none"> <li>10. Drop board blocks</li> <li>11. Dam / grip block</li> <li>8. Block ditch</li> <li>8. Bund repairs</li> <li>7. Stock fence</li> <li>6. Reedfen scrapes</li> <li>5. Swale</li> <li>4. Tree removal</li> <li>2 &amp; 3. Bund 10-15cm x 1m</li> <li>1. Fiall heather</li> </ul>	<p><b>Legend</b></p> <ul style="list-style-type: none"> <li>10. Drop board blocks</li> <li>11. Dam / grip block</li> <li>8. Block ditch</li> <li>8. Bund repairs</li> <li>7. Stock fence</li> <li>6. Reedfen scrapes</li> <li>5. Swale</li> <li>4. Tree removal</li> <li>2 &amp; 3. Bund 10-15cm x 1m</li> <li>1. Fiall heather</li> </ul>	<p><b>Acknowledgements &amp; notes:</b></p> <p>© Crown Copyright. All rights reserved. RSPB licence 100021797</p>	<p><b>Created by:</b> RSPB</p> <p>0 0.075 0.15 0.3 km</p> <p>Map scale = 1:13,624 Date printed: 23.05.2018</p>	
---	--	---	--	--





















# *Moss of Many Layers*

From *wasteland* to *wonderland*

*A science-conservation-art-community project  
bringing Bolton Fell Moss to Life*



TIME  
SETTLES  
DARKLY

A white banner with black text is suspended in a field of tall grass and dark soil. The banner reads "TIME SETTLES DARKLY". The background shows a vast landscape under a blue sky with scattered white clouds.





Anne Waggot Knott



Harriet Fraser



Helen Cann




Juliet Klottrup



People Land ART Culture Ecology







ACTIONS  
SPEAK  
LOUDER



**...to 80**

“I never did anything but cut the peat. I didn't stack or stoke or anything like because I was a part timer. Nobody knew how hard it was going to be. All piecework – if you didn't work, you didn't get paid.”

Dick Davison (left) , former peat cutter at Bolton Fell Moss, pictured with Joe Calvert.

Dick last set foot on the moss midsummer 1972.

NATURAL ENGLAND STARTS RESTORATION - 2017

2019 - IT BECOMES A NATIONAL NATURE RESERVE

# BOLTON FELL MOSS

