



Yorkshire's Eyes are on the Bog

Beth Thomas

Data and Evidence Manager

ypppartnership.org.uk

Rewet, replant, restore

Rolling out Eyes on the Bog in Yorkshire

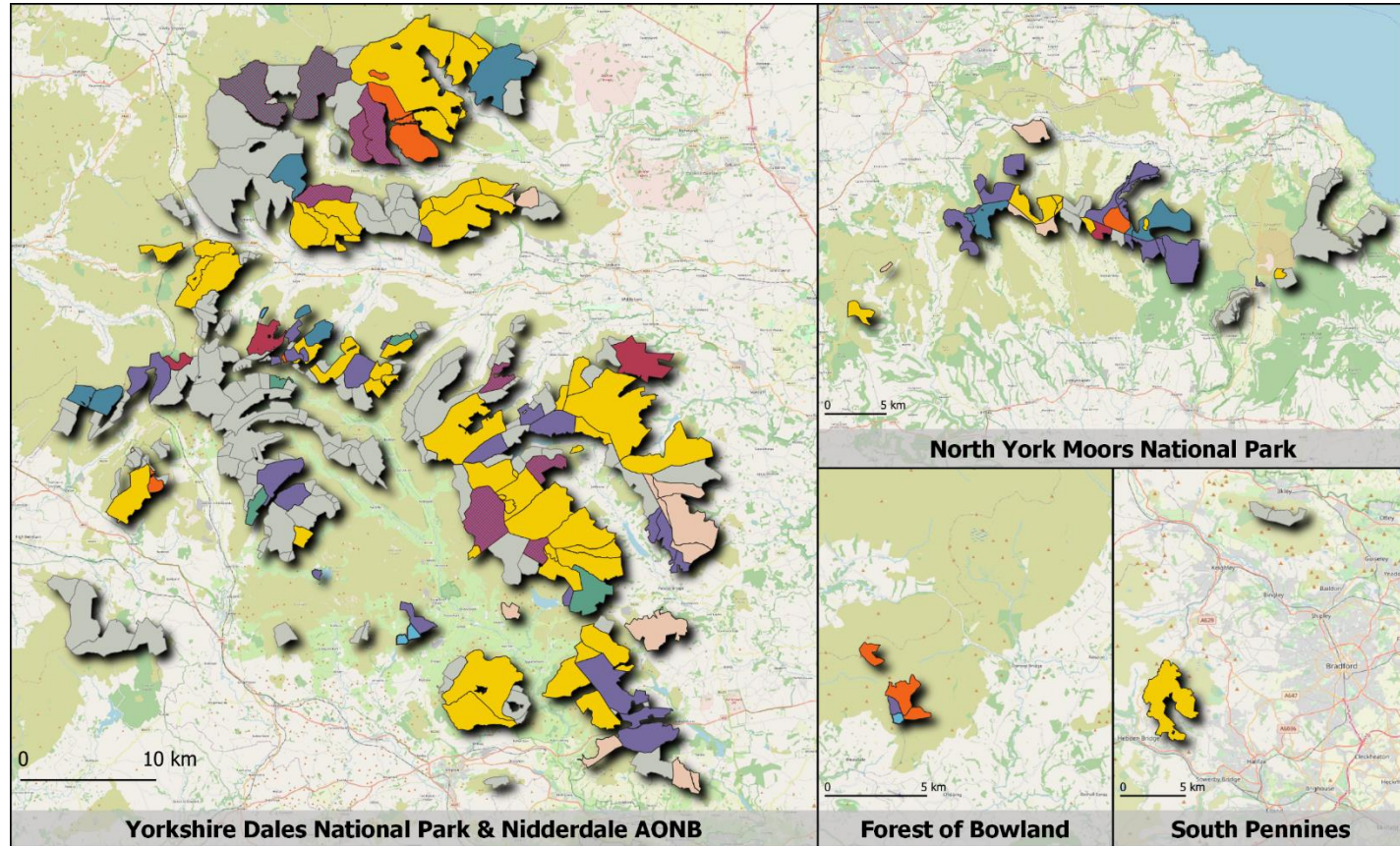
- Why?
- Where?
- How?
- Challenges
- What next?



Yorkshire Peat Partnership



yppartnership.org.uk



Base map from OpenStreetMap and OpenStreetMap Foundation. © OpenStreetMap contributors.

2020/2021

Eyes on the Bog



yppartnership.org.uk



People's Postcode Lottery



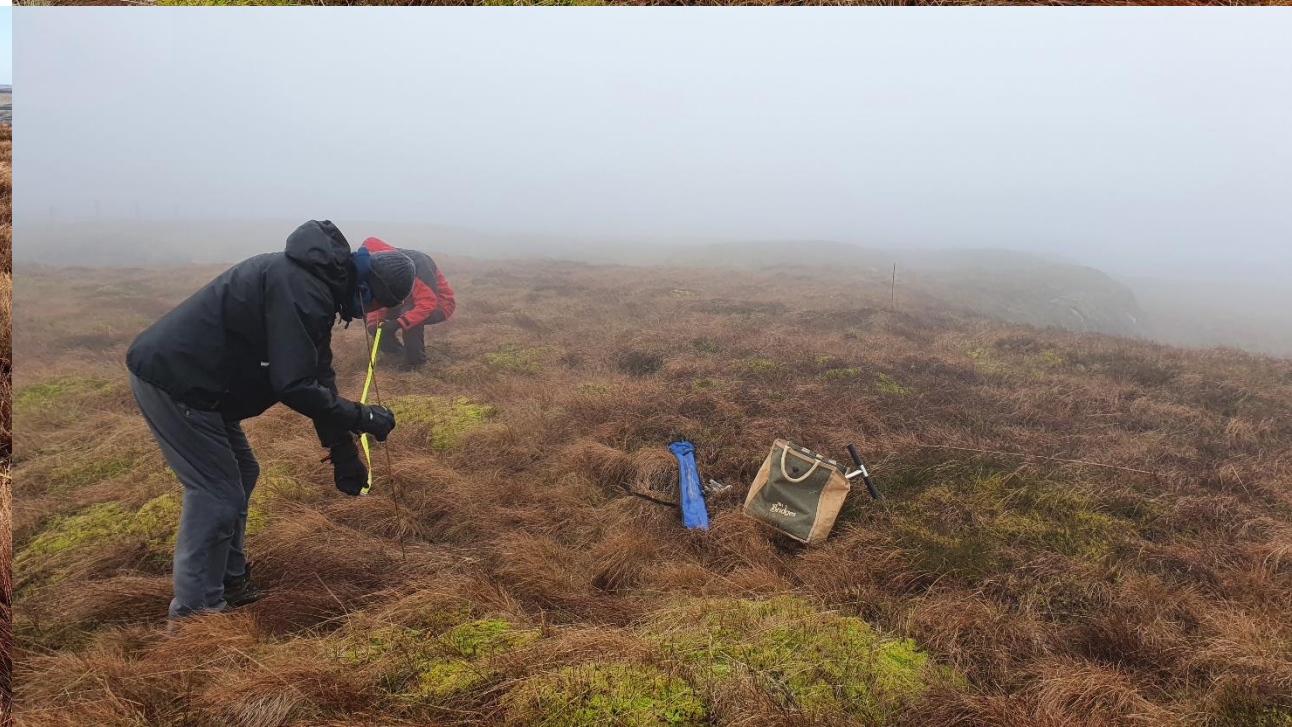
Find a friend



National
Trust



Find a friend




Find a friend



EYES ON THE BOG

funded as part of THE GREAT NORTH BOG



EYES ON THE BOG

What?

Eyes on the Bog enables scientifically robust, repeatable, low-tech, long-term monitoring on peatland sites.

Once set up, data can be easily and sustainably be collected by staff, keepers, farmers or local volunteers.


The basic techniques have been designed by the [IUCN UK Peatlands Programme](#). The standardised procedures mean that peatlands can be monitored across the UK to a consistent standard, creating a network of sites that can be easily and reliably compared with one another.



Where?

Eyes on the Bog sites can include damaged peatlands, peatlands under restoration or peatlands in good condition. Having sites at different stages can help us understand how they change through time.

Monitoring instruments should be established on deep peat to which monitors have easy, safe access.



Peat depth marker

Why?

Existing peatland monitoring is happening around the UK but to varying standards—this means data from one site may not be easily compared with data from another. We want to establish a simple, repeatable set of guidelines setting out how to collect the basic information needed to assess the condition of peatlands and effectiveness of restoration techniques; this will help us to refine the Peatland Code and test long term climate predictions.

The aim of Eyes on the Bog is for the equipment to run for as long as possible to collect long-term, reliable data without damaging the bog. We want to create a network of monitoring plots on accessible sites. We hope to involve the public as citizen scientists and so raise awareness of these special habitats.

Who?

We (Great North Bog) are proposing locations as Eyes on the Bog sites across the north of England. We are asking local land owners, farmers, gamekeepers, volunteer groups, schools and other community groups to get involved. Exactly who is involved will vary from site to site depending on access (safety) and interest. It is possible just to have a farmer or gamekeeper check the monitoring once a year or, if a site has access and interested parties, involve volunteers and the local community much more frequently.

Eyes on the Bog sites must be set up following the exact procedure described in the manual. If sites are not set up in a standardised manner, the data collected will be less reliable and not comparable with other sites in the network. We are proposing to do additional monitoring to the IUCN basic set up. How much additional monitoring will depend on each site.

Questions

Where does the data go?
Great North Bog partners and keepers etc.) who would like

How often will someone visit?
Depends on what monitoring

How much space will this occupy?
On each site (moor) that joint

How long will the monitoring last?
Ideally, many years. It may not could be left a very long time

Peat depth marker (post)



Water table rods

Fixed point photography

These three are required on every site, everything else will depend on the site.

Gas monitoring

360 photography

**Yorkshire
Wildlife Trust**



Find a friend



 **Yorkshire Wildlife Trust**

Volunteer Application Form

Please complete the details below and return this form to volunteering@ywt.org.uk or post to
Volunteering Support Team, Yorkshire Wildlife Trust, 1 St Georges Place, York, YO24 1GN

Title of the opportunity you're applying for

Your details:

Title: _____ Address: _____
 First name: _____ Town/City: _____
 Last name: _____ Postcode: _____
 Phone: _____
 Email: _____

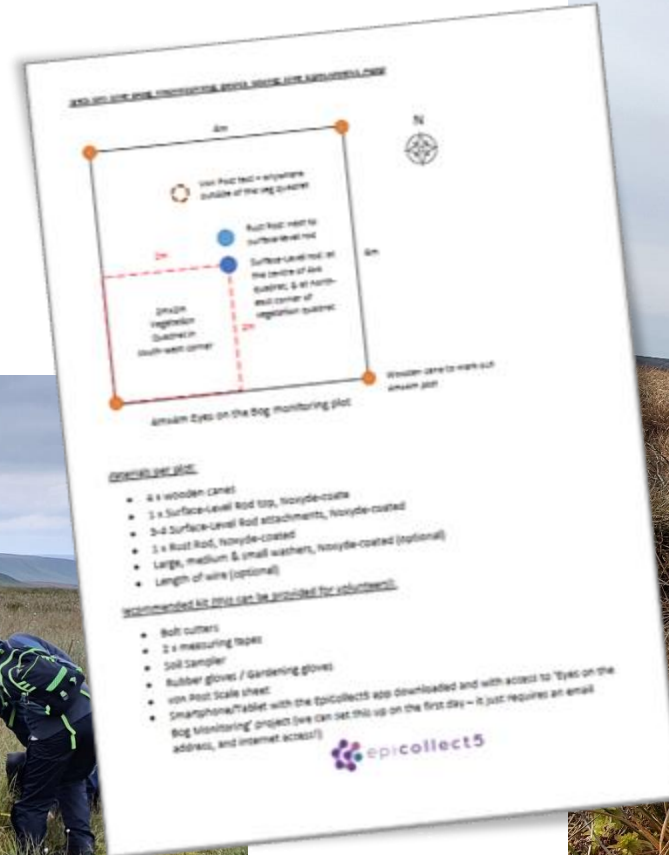
If you are under 18, please provide a parental signature and accompany them.

 **Yorkshire Wildlife Trust**

Volunteer Role Description

Volunteer Role Title	Role Number
Peatland Monitor	
Reserve, Project, Team or Area	
Yorkshire Peat Partnership (YPP)	
Volunteer Manager/Supervisor	
Beth Thomas, Peatland Restoration Officer	
Why do we need you?	
We're looking for people who love huge stunning views and gathering scientific data!	
Yorkshire Peat Partnership are starting a project to monitor peatlands, this will involve having monitoring stations on many different upland sites across North Yorkshire. The monitoring will include measuring peat depth and accumulation, the water table, fixed point photography, vegetation quadrats, gas (carbon) monitoring and other monitoring depending on the site.	

Training Volunteers



Training Volunteers



Vegetation ID Sheet

Heathers VS Dwarf shrubs
Dwarf shrubs are small woody stemmed plants. Heathers is a dwarf shrub with small leaves and pink flowers. All the rest can be called 'other shrubs'.

Heather:

- Common heather (Calluna vulgaris)
- Cross-leaved heath (Erica tetralix)

Dwarf shrubs:

- Crabapple (Malus sylvestris)
- Claytonia (Claytonia virginica)
- Bilberry (Vaccinium myrtillus)
- Genet (Genetia sp.)
- Osprey (Osprey sp.)

Aolinia:

- Purple Moor-grass (Poa annua)

Other Grasses:

- Woolly-grass (Deschampsia flexuosa)
- Heath-grass (Deschampsia cespitosa)

PERPET MOOR-GRASS IS MUCH BIGGER THAN OTHER GRASSES GROWING UP TO 1.2M TALL



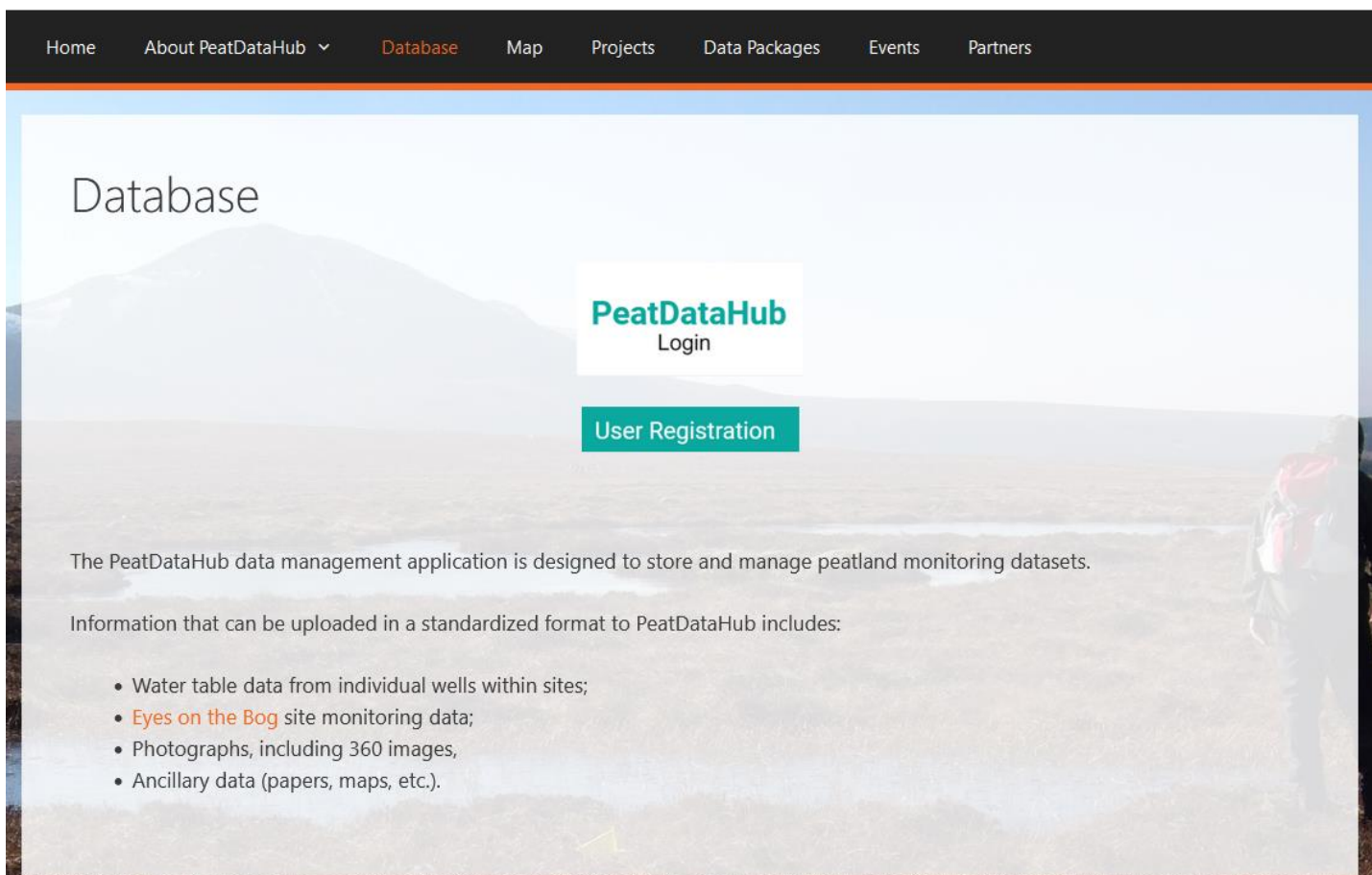
Training Volunteers

<https://peatdatahub.net/database/>



PeatDataHub

combining global peatland datasets



The screenshot shows the PeatDataHub website's database page. The navigation bar includes links for Home, About PeatDataHub, Database (highlighted), Map, Projects, Data Packages, Events, and Partners. The main content area features a large background image of a peatland landscape. Overlaid on this image are two buttons: a white 'PeatDataHub Login' button and a teal 'User Registration' button. Below the buttons, there is a paragraph of text describing the application's purpose and a list of data types that can be uploaded.

Home About PeatDataHub ▾ Database Map Projects Data Packages Events Partners

Database

[PeatDataHub Login](#)

[User Registration](#)

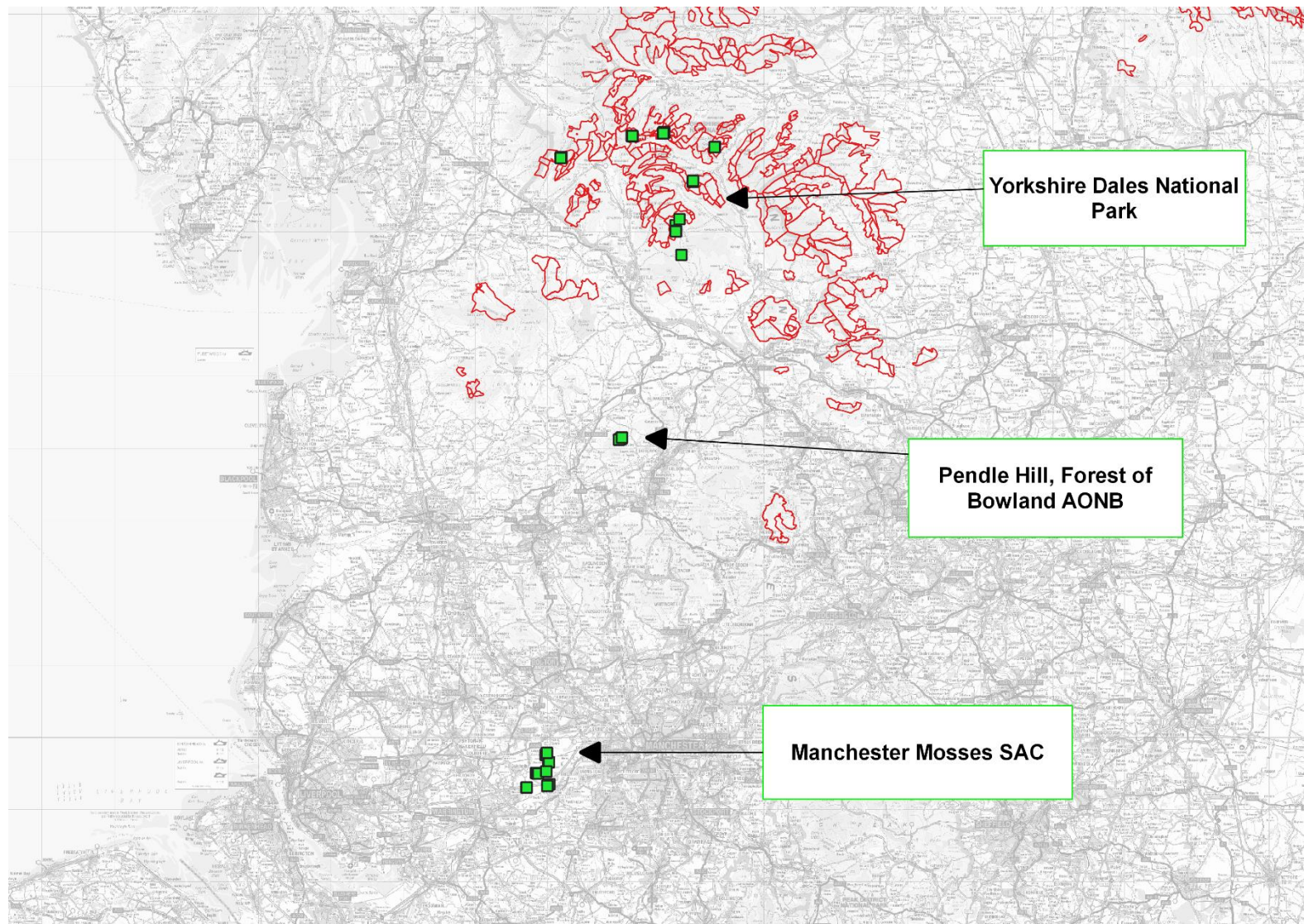
The PeatDataHub data management application is designed to store and manage peatland monitoring datasets.

Information that can be uploaded in a standardized format to PeatDataHub includes:

- Water table data from individual wells within sites;
- **Eyes on the Bog** site monitoring data;
- Photographs, including 360 images,
- Ancillary data (papers, maps, etc.).

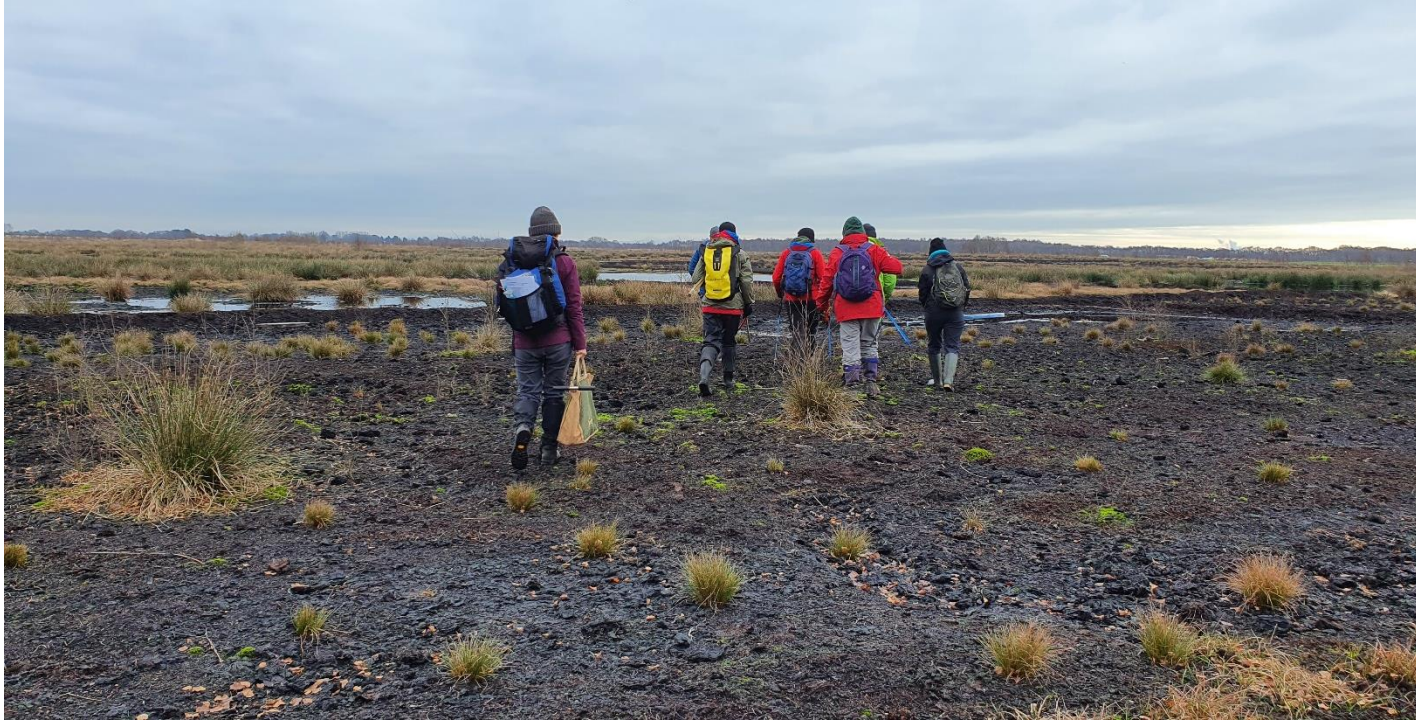
Success

- 55 Plots
- 17 sites, 10 in Yorkshire
- 314.5 volunteer hours
- Over 40 volunteers engaged



Challenges

- Staff time/organising time
- Volunteers leaving
- Site access
- Equipment issues



What next?



What next?



What next?



Thank you

