

A landscape photograph of a peatland area. In the foreground, there is a stone wall and a wooden fence. The middle ground shows rolling hills with patches of green and brown vegetation. The background features more distant hills under a blue sky with scattered white clouds. The text "Benefits of Peatland from a Land Manager perspective" is overlaid in white, bold, sans-serif font.

# Benefits of Peatland from a Land Manager perspective

# The Heather Trust

## Caveat

- Land Managers are not all the same



# The Heather Trust

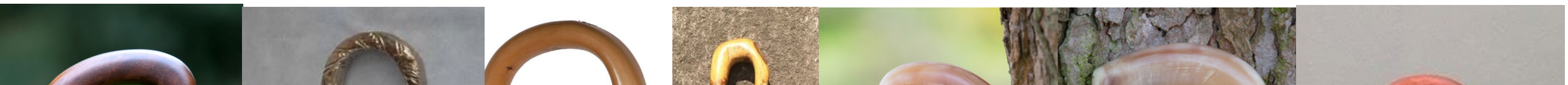
**Sheep = income**

**Healthy crop of lambs to sell**

- enough grass/heather/vegetation
- to control liver fluke, tick, flystrike, Johnes disease and other parasites
- reduce blackloss

**Don't upset "the department" (RPID)**

- Regulatory requirements for BRP
- SRDP activity





# The Heather Trust



# The Heather Trust

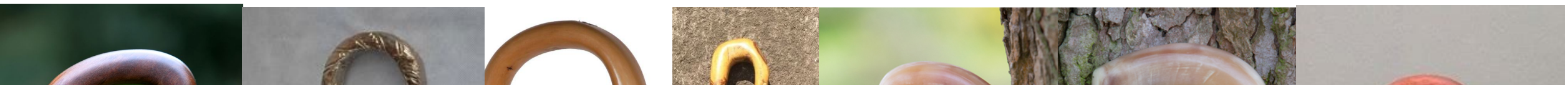
**Sheep = income**

**Healthy crop of lambs to sell**

- enough grass/heather/vegetation
- to control liver fluke, tick, flystrike, Johnes disease and other parasites
- reduce blackloss

**Don't upset "the department" (RPID)**

- Regulatory requirements for BRP
- SRDP activity



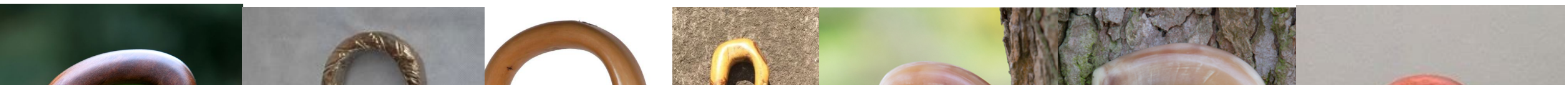
# The Heather Trust

**Grouse = income/objective**

**Decent crop of grouse to shoot**

- enough insects and heather for food, shelter/cover
- to control parasites (tick and worms mainly)
- reduce losses

**Sheep concerns also relevant as most moors run both together.**



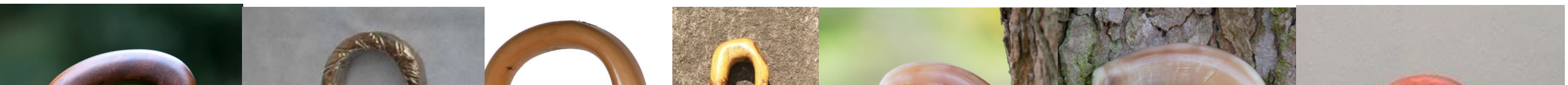
# The Heather Trust

**Deer management – income**

**Enough stags to shoot**

**Will restoration come with conditions to lower numbers?**

**Will timing of restoration be prohibitive to autumn stalking?**

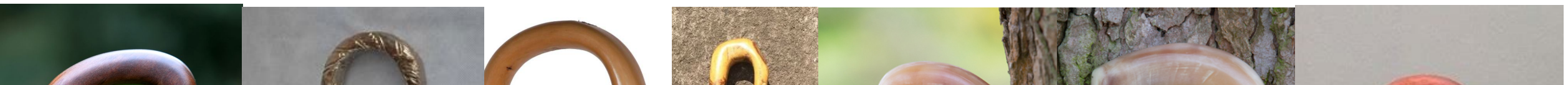




# The Heather Trust

## Summary

- ▶ Understand
- ▶ Find the positives
- ▶ Address/acknowledge concerns







Thank you for listening