

The State of UK Peatlands

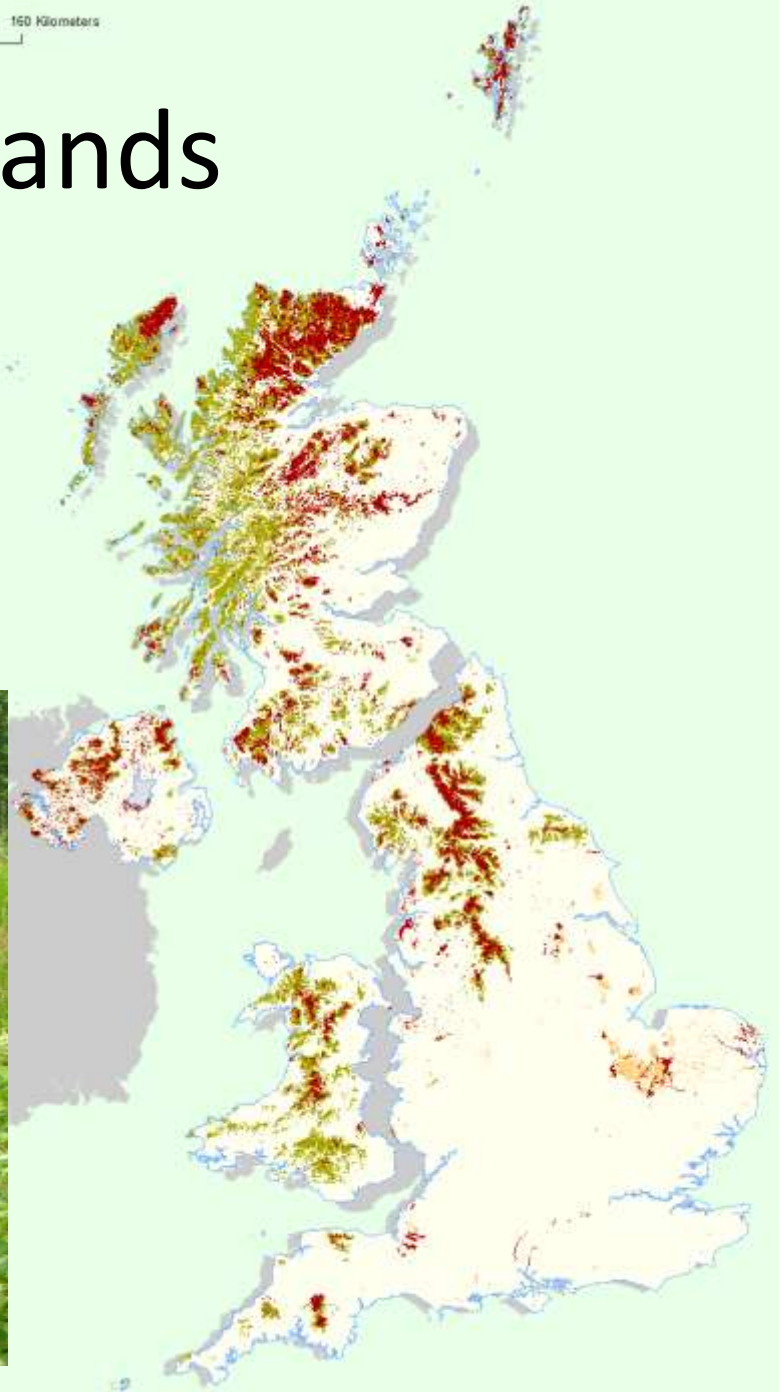
JNCC Soils, Uplands and Lowland Wetlands Lead Coordination Networks

Matthew Shepherd*, Patricia Bruneau[†],
Sally Johnson[†], Peter Jones[‡], Richard
Weyl[§], Alex Higgins[⌘]

*Natural England, [†]Scottish Natural Heritage,
[‡]Countryside Council for Wales, [§] Department of
the Environment –Northern Ireland, [⌘] Agri-food
and Biosciences Institute.

0 40 80 160 Kilometers

UK Peatlands

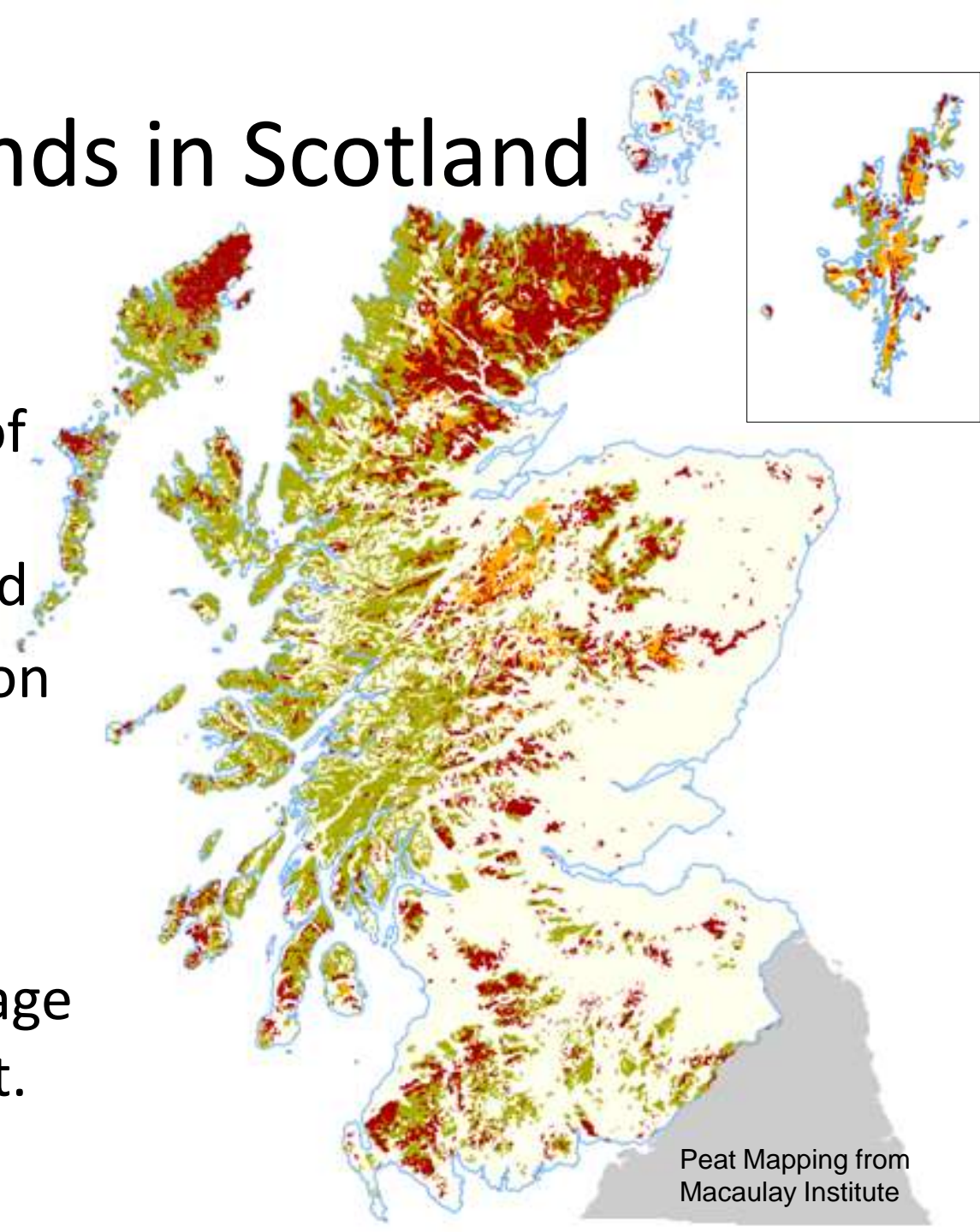






Peatlands in Scotland

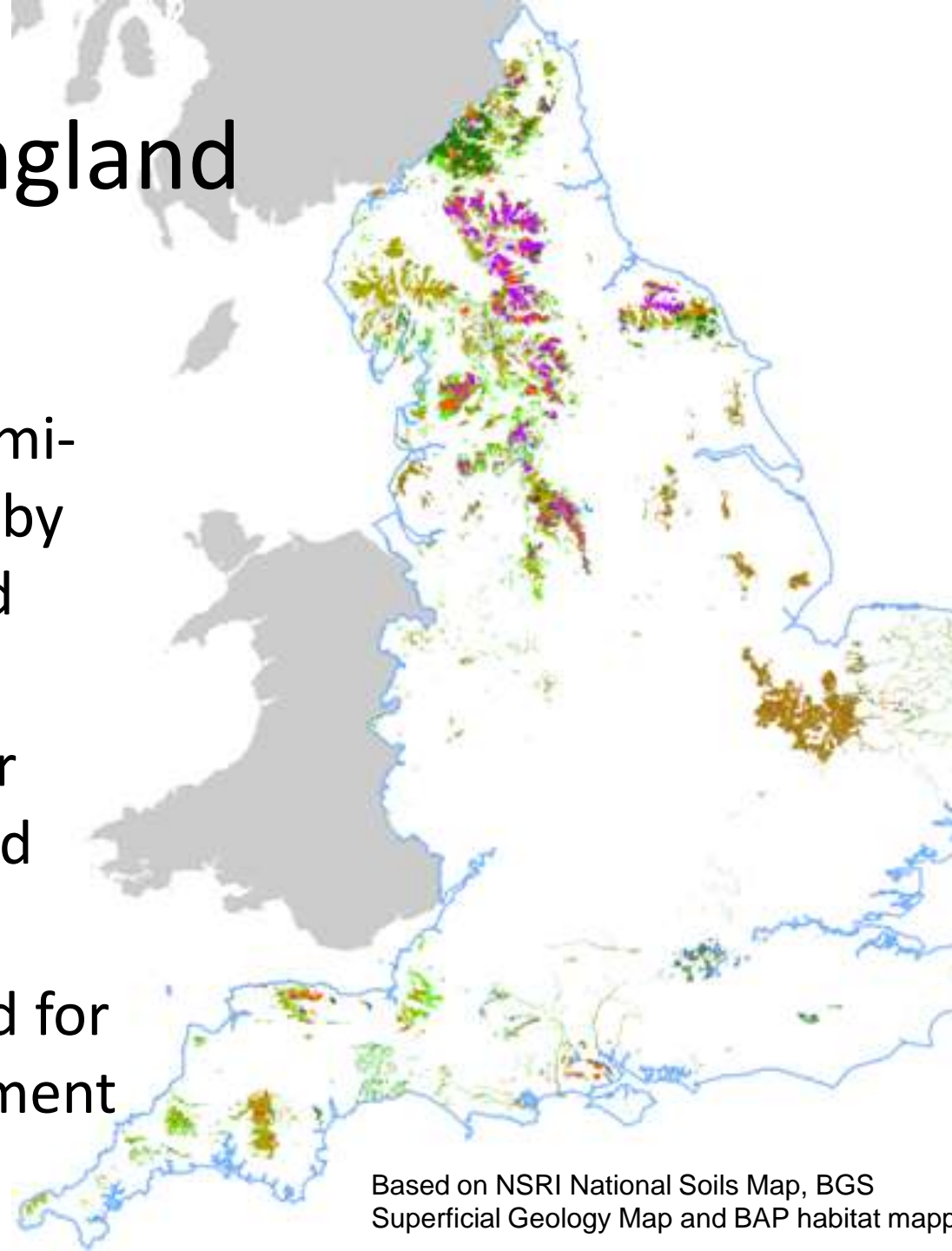
- Has largest area of peatlands
- Extensive mapping of peat soil and peat depth – some eroded
- Less extensive data on management, vegetation cover or peat condition.
- Muirburn and drainage are locally significant.



Peat Mapping from
Macaulay Institute

Peatlands in England

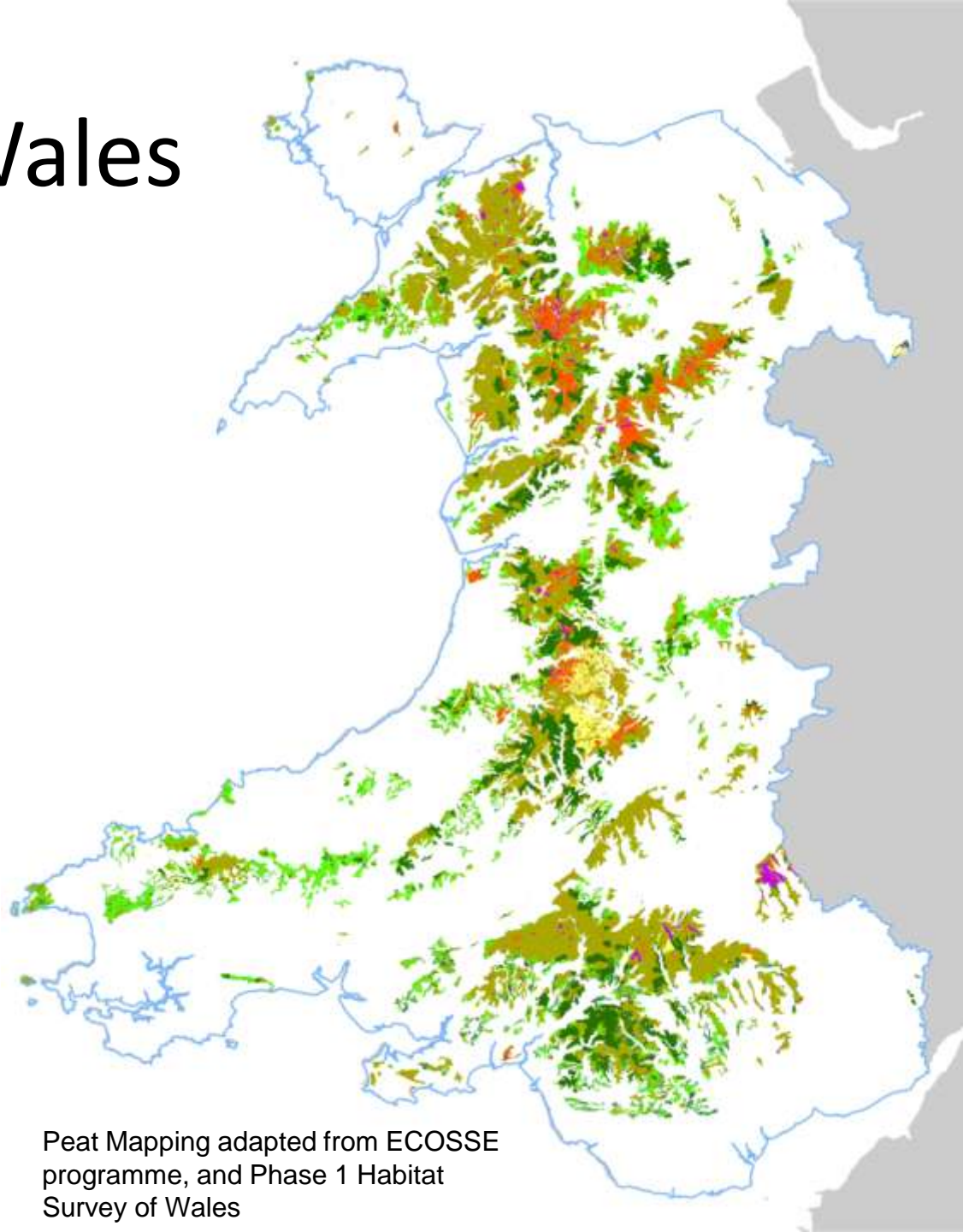
- England's Peatlands - Natural England
- Blanket peatlands semi-natural, but affected by burning, gripping and peat erosion.
- Shallow peat used for forestry and improved grassland
- Lowland peat drained for agricultural improvement / cultivation



Based on NSRI National Soils Map, BGS
Superficial Geology Map and BAP habitat mapping

Peatlands in Wales

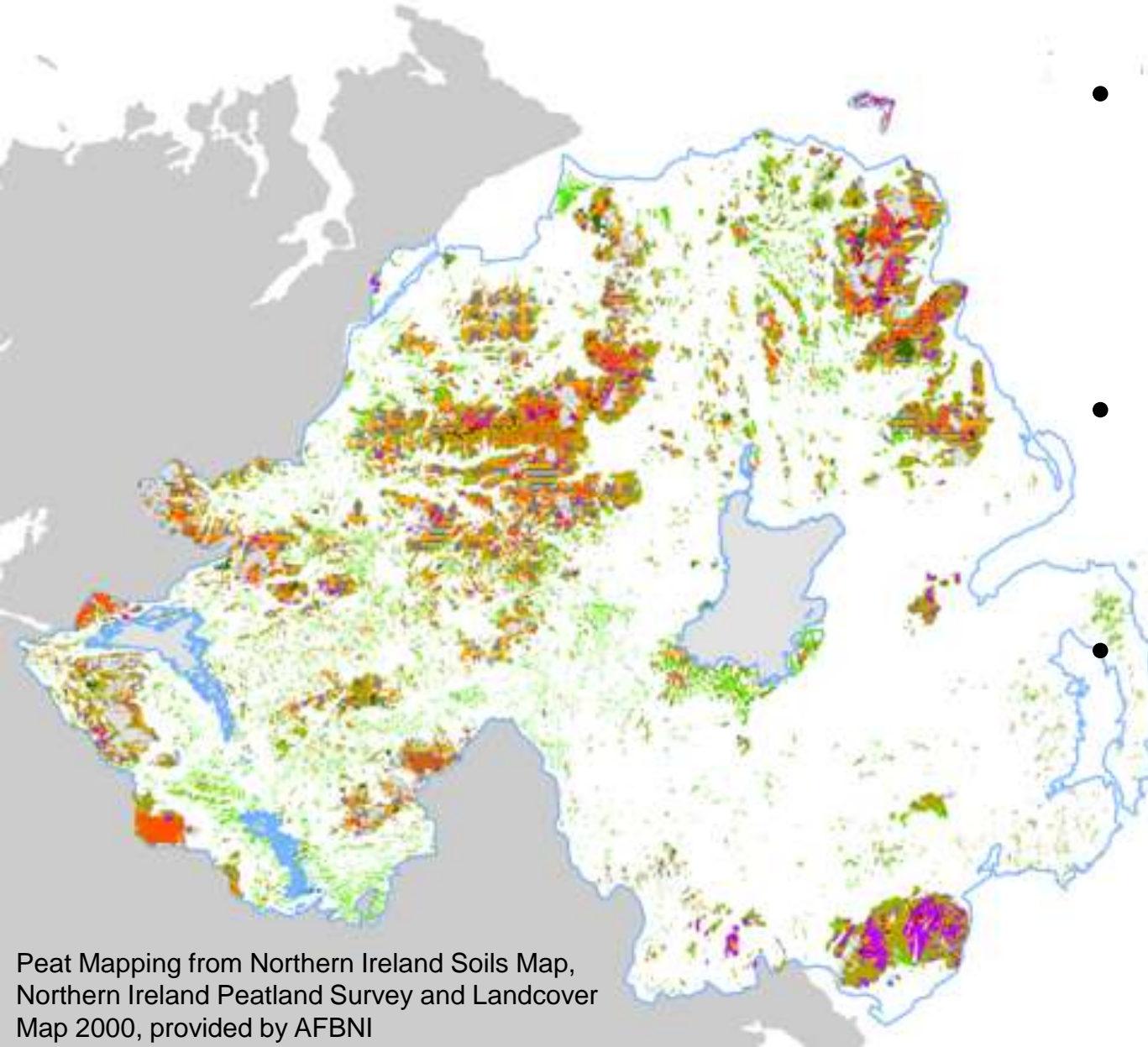
- Phase 1 survey data
– indicates land cover but not management
- Shows large semi-natural areas, and some active bog
- Also large areas dominated by Purple Moor-grass and forestry



Peat Mapping adapted from ECOSSE programme, and Phase 1 Habitat Survey of Wales

Peatlands in Northern Ireland

- Information from NI Peatland Survey and LCM 2000
- Much S-N and some large active peatlands
- Peat cutting, drainage and erosion extensive.



Peat Mapping from Northern Ireland Soils Map,
Northern Ireland Peatland Survey and Landcover
Map 2000, provided by AFBNI

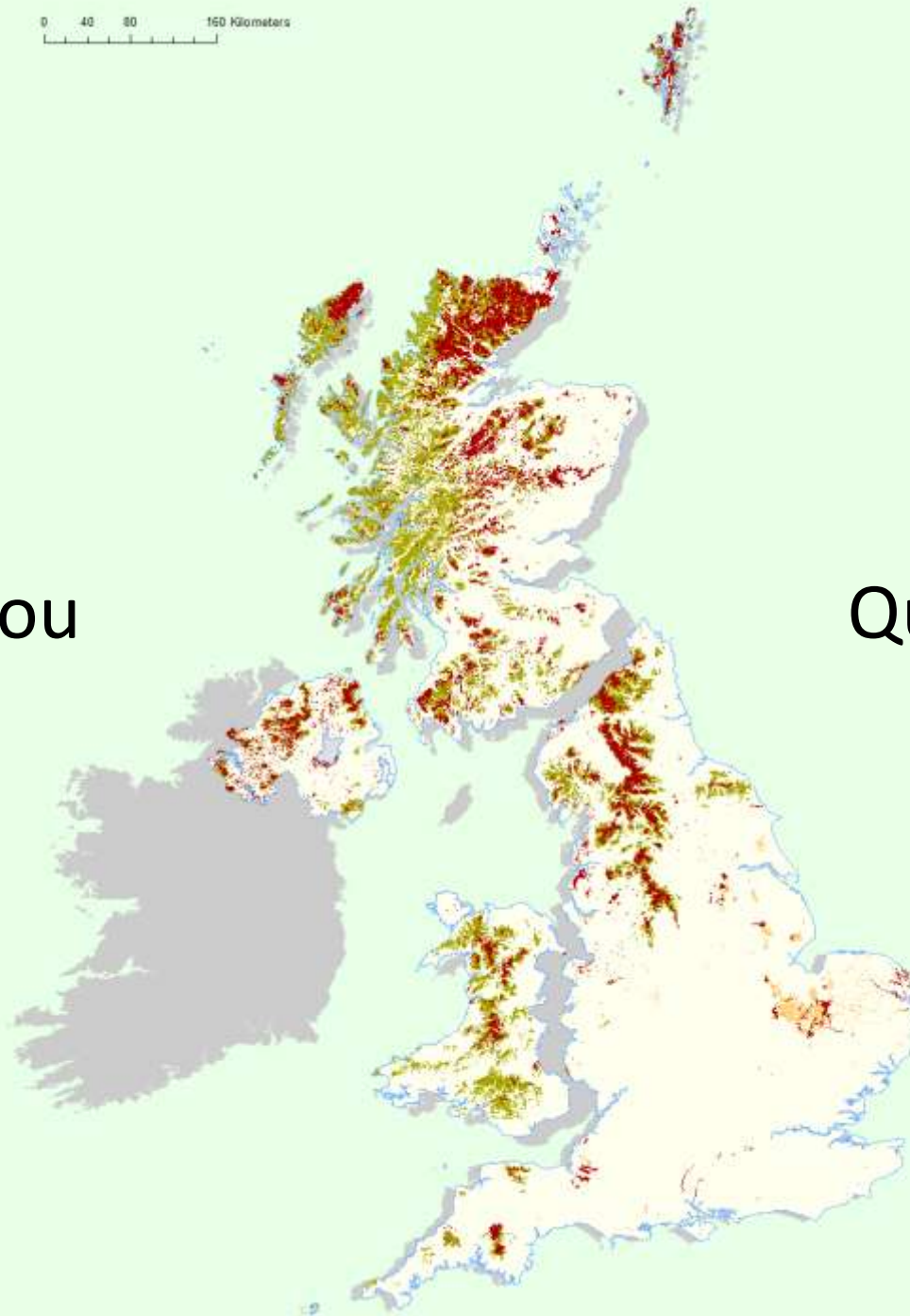
Issues

- What does “peatland” mean?
- Peat mapping is based on different definitions of peat (depth/%OM) – no match at borders
- Lack of common framework to describe peatland land cover, management and condition of peat mass.
- Better peat depth map – for location and C storage etc.
- More land use/cover data needs collating in some UK countries.

Conclusions

- Peatlands should be viewed on basis of peat soils, regardless of vegetation – understanding of ecosystem services and restoration potential
- Surface layer depth and %OM are unifying features – use in future peat surveys - explore remote sensing
- State of UK peatlands – mapped areas show burning, drainage, erosion, peat cutting, cultivation, forestry – most semi-natural.
- More map data needed to understand land cover and management for some UK countries
- State of our peatlands impacts on their functions – underpins the case improved peatland management and restoration.

0 40 80 160 Kilometers



Thank you

Questions?