



National
Trust



Sarah Smith, General Manager, Fenland
Creating a landscape for people and nature in the Fens



National
Trust



Over 9,000 species
recorded.

National Nature Reserve
Site of Special Scientific Interest
Special Area of Conservation
Ramsar site



(c) Richard J Nicoll 2011

Richard Nicoll



National
Trust

Connecting people with nature



The 5 types of relationship important
for nature connection



Senses



Emotion



Compassion



Meaning



Beauty



These 5 pathways can
cross over, merge and be used
separately or together.





National
Trust

65,000 visitors per year
(plus many more using public rights of
way)

Walking
Boat trips
Cycle hire
Wild-camping
School visits
Events
Café
Visitor centre



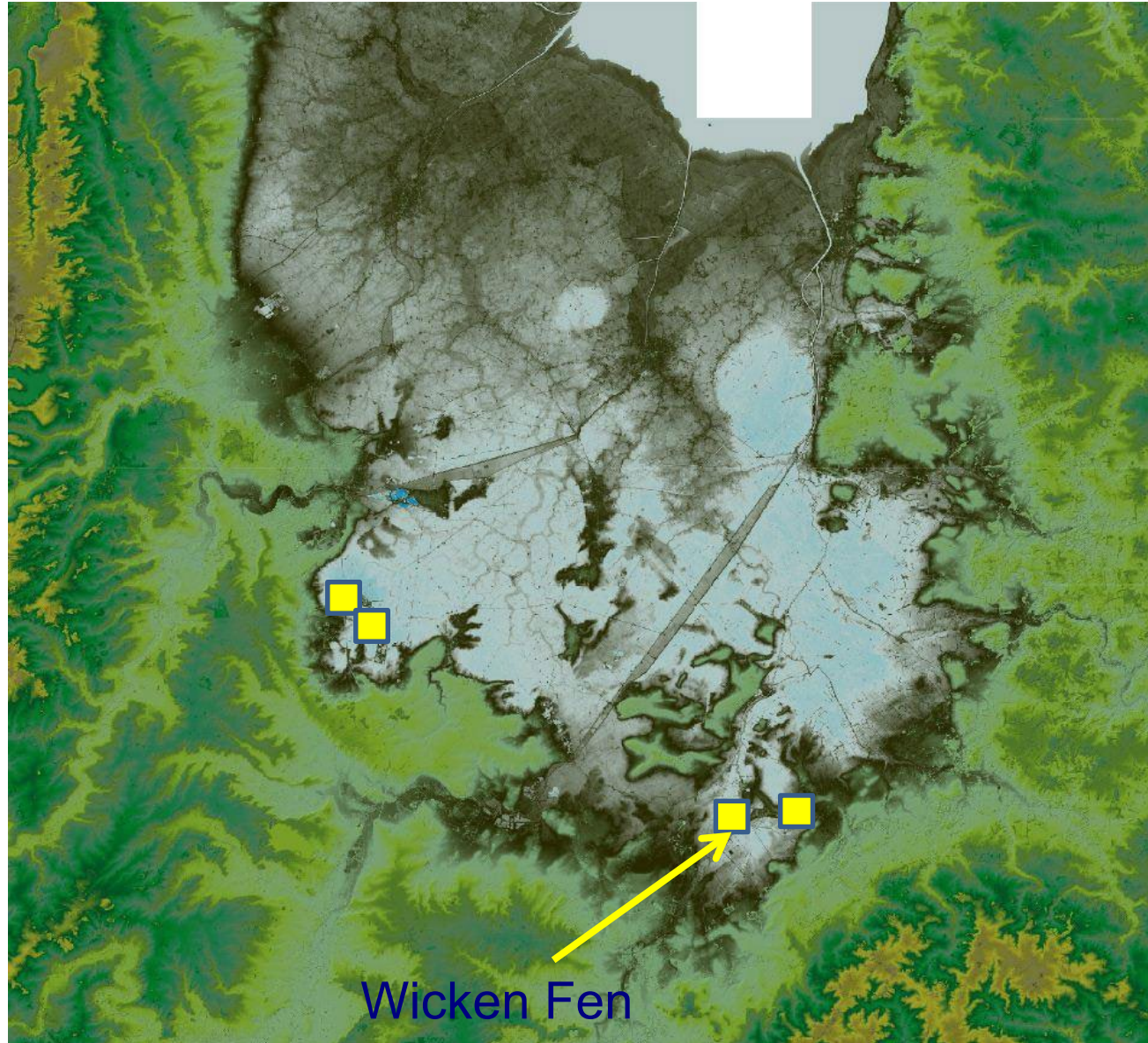


Wicken Fen: Why so important?

The Fenland basin: once England's greatest floodplain wetland complex (3,850 sq. km)

Less than 0.2% of original undrained fen remains (7.13 sq. km)

A significant store of carbon in the fen peat.



Lidar image



National
Trust

Wicken Fen Vision

Creating a 53 square kilometre
landscape for wildlife and
people in Cambridgeshire

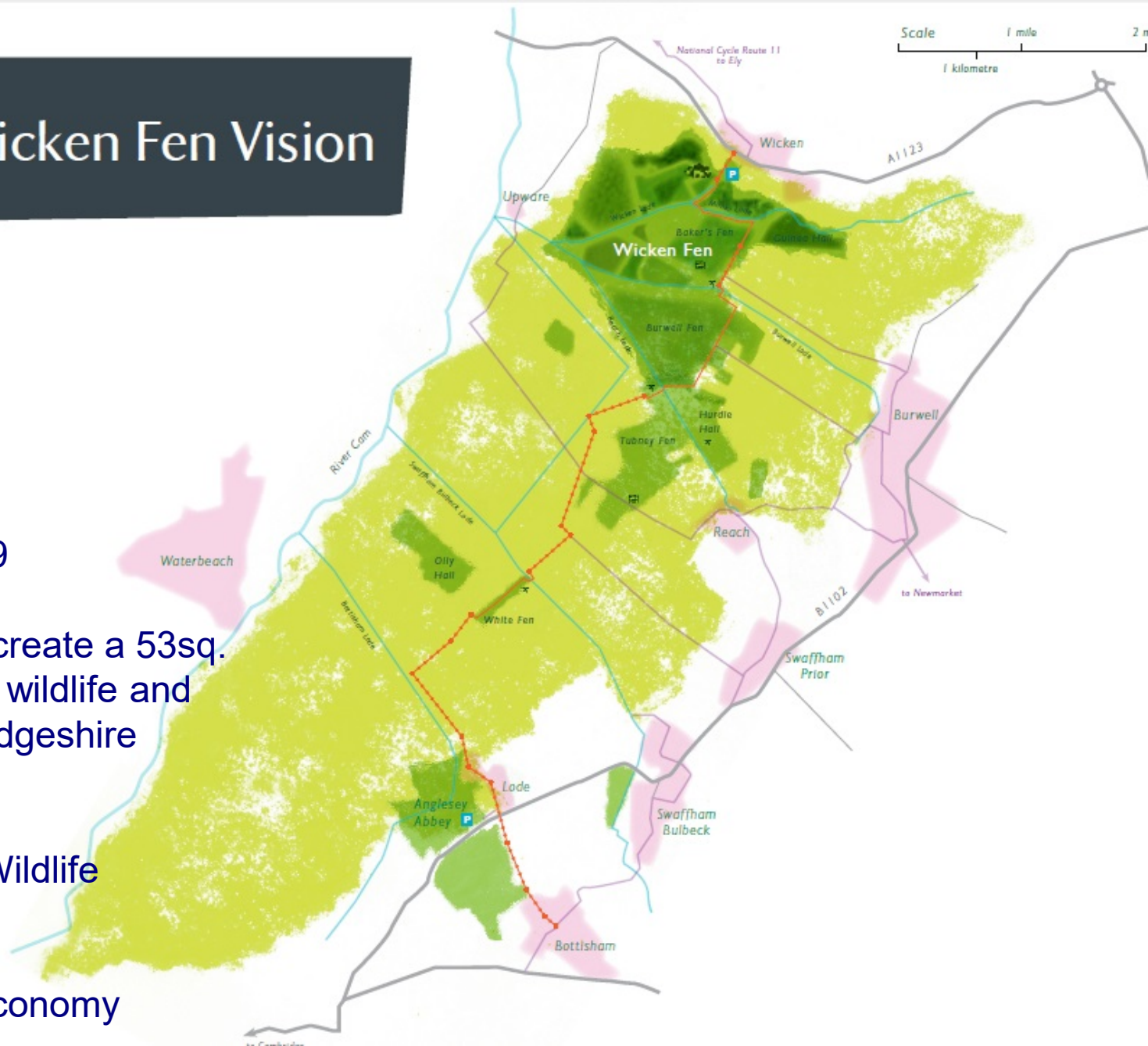


Wicken Fen Vision

Launched in 1999

100 year plan to create a 53sq. km landscape for wildlife and people in Cambridgeshire

- Habitats and Wildlife
- People
- Learning
- Sustainable Economy





Wicken Fen Vision: Why?

Demands on our environment are greater than ever.

Landscape-scale drainage has fragmented habitats.

Local population is increasing and people need greenspace.





1999
Wicken Fen
Vision launched



446
hectares of land purchased



6
cranes using
new
habitat



over 5000
wintering waterfowl using new habitat



48km
of public access created
or improved

2
bridges
built



65,000
people to the visitor centre
each year (many more using
the access network)

Lodes Way
linking to
National
Cycle
Network



'Back to basics'
campsite established



100
Konik ponies grazing



cycle hire opened





Working beyond our boundaries...



Cambridgeshire Fens UNESCO Biosphere Reserve?

A special place for people and nature
that delivers...

- Nature conservation
- Sustainable development & tourism
- Engaged communities

This exciting partnership has the
potential to change the Fen basin on
a landscape –scale.





All images courtesy of National Trust
images unless otherwise stated.

Sarah Smith, General Manager
sarah.smith1@nationaltrust.org.uk
nationaltrust.org.uk/wickenfen