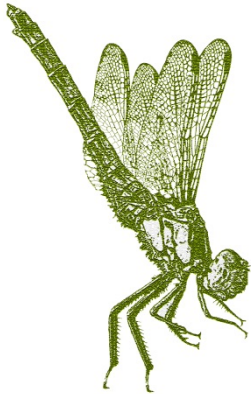


# The Friends of Langlands Moss LNR, East Kilbride



# Aerial View of Langlands Moss Local Nature Reserve. East Kilbride



# Who are the Friends of Langlands Moss LNR?

- We are local people who live in the East Kilbride area.
- In 2006, we formed a fully constituted group because we were concerned about the decline of the area and the impact of ever encroaching industrial development on the Moss.
- At that time we did not understand the importance of the Moss or the role of peatlands as carbon sinks.
- Since then we have worked with SLC CAG to protect and improve the hydrology of Langlands Moss LNR.



# What have we done to improve Langlands Moss LNR?

- As the bog was drying out, our first priority was to improve its hydrology.
- We applied to the Big Lottery Fund and Scottish Natural Heritage for funds to buy damming material.



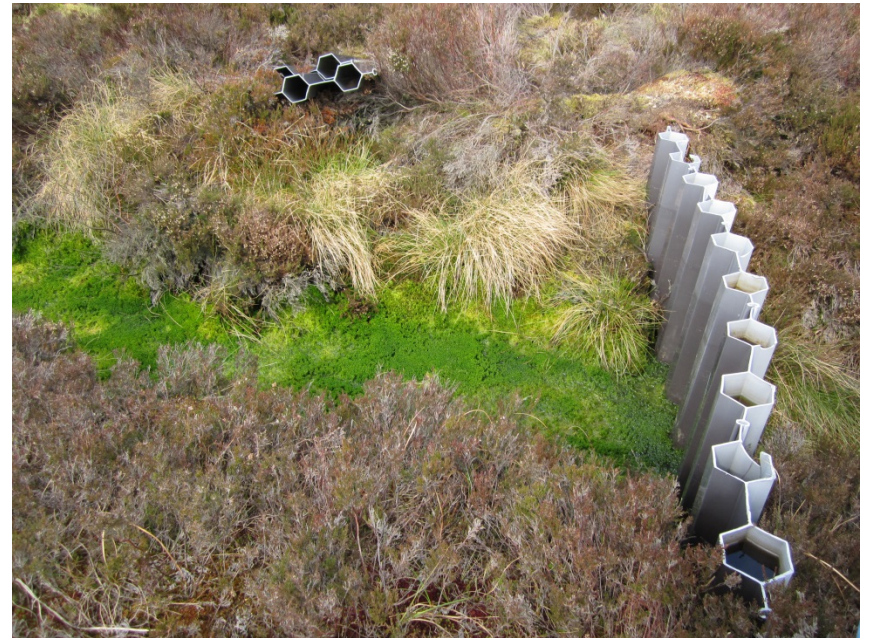
# Installing Dams



- **Between 2007 and 2013**
- **30 dams were installed.**
- **All installations have been done by FOLM or other voluntary groups under the supervision of FOLM and assisted by SLC CAG.**

# Has it made a Difference?

- Since the dams have been installed there has been a marked improvement in the hydrology or water table of the Moss.
- **We finished the main ditch in the Autumn of 2013.**





# Damming since 2014

- Since 2014 we have had regular assistance from Butterfly Conservation's Bog Squad.
- Over the past few years many dams have been installed and many ditches closed off!



# Working!





The access paths to the Moss were all very muddy and over grown.



- **Attracting and keeping volunteers was made difficult because the access paths were in such poor condition.**

# Paths improvement



- Funds were obtained from South Lanarkshire Rural Trust Leader Programme. The improvement work on the access paths was done by Offenders supervised by the South Lanarkshire Community Payback Services Scheme.

# Boardwalk

- Some of the very fierce winters several years ago plus more visitors coming to the Moss either in groups or individually made us realise that we needed to replace the current boardwalk which was deteriorating into a dangerous condition.





# New Boardwalk

- The new boardwalk cost just under £100K and was made from recycled plastic milk bottles.
- Funding was obtained from SLC Renewable Energy Programme, Viridor Landfill and Heritage Lottery Fund.
- It was installed between November 2012 and January 2013.



# Boardwalk Opening

- The boardwalk was officially opened by our patron and local boy, Professor Iain Stewart MBE – the TV geologist on 19<sup>th</sup> March 2013 in a blizzard.
- Despite the weather we had a very good afternoon.



# The New Boardwalk



- **The improved boardwalk increased the footfall from approximately 5K to 27.5K**
- **It raised the profile of peatlands and we held a number of family events there – some more popular than others**



# Community Payback

- Over the years, we have had a lot of assistance from the Community Payback Service.
- One of their initiatives had been to install several picnic areas in the former car park.



# Disaster!

- In May 2016, person or persons unknown started a fire close to the boardwalk causing us to lose about a third of it.
- Despite this set back, we raised £24K through events and grants in a year.



# Again!!!!



- The week before work was to begin on the boardwalk repair, the rest of the boardwalk was melted.
- **We believe it was done deliberately using gas canisters and it was one of the biggest fires ever seen in East Kilbride.**



# Where now?



- **A great number of people in East Kilbride were shocked by this latest fire.**
- **We got lots of help to clear up and it has really increased the interest in the area.**

# This Year - 2018

- Sainsbury`s PLC have funded a new woodland walk.
- Beechwood Cattery, EK have funded new signage.
- A major feasibility study has been carried in the area.
- The LNR is to be extended in the new SLC Local Plan



# New Helpers! Young Farmers and B.B.





# Why have a Friends Group?

- **Friends Group can access funds which are not available to local authorities.**
- **It is a way of like minded people working together for a common goal.**
- **It improves local neighbourhoods and encourages pride and ownership in your own area. We work with local schools, Scout groups, B.B. groups and many others.**
- **It can appeal to all ages.**
- **It encourages people to socialise and exercise in a healthy environment.**

# Membership

- **Our age group is from 17 to 70 plus.**
- **We have had people with different expertise in the group:-** administration, damming, knowledge of wildflower propagation, amphibians, butterflies and birds.
- **This enables us to have the area surveyed regularly and has improved the biodiversity records for our area.**
- **It also means the group is able to learn from each other and each member feels valued for their contribution. Praise is very important!**

# Restrictions of Friends Group

- **Commitment**
- **Availability and flexibility in the leadership**
- **Awareness of strengths and weaknesses in the group.**
- **Retaining young people and sometimes not so young people!**
- **Involving everyone productively**
- **Relationships e.g. personality clashes**



# Our funders and partners are:-

