



Cumbria

Foulshaw- using history

David Harpley

Conservation Manager

Cumbria Wildlife Trust

Witherslack Mosses SAC

- 3 Raised Bogs on the north side of Morecambe Bay. Foulshaw 350 ha, Meathop 80, Nichols 100. Once probably all one interconnected mire complex.
- Roughly 1250mm per year rainfall (a lot of it in summer).

- permitted access
- boardwalk
- P parking
- bus stop
- boundary of Cumbria Wildlife Trust Reserve



Impassable

- In combination, the bogs in the various valleys were regarded as impassable and lead to the development of travel across the sands of Morecambe Bay. An extremely hazardous undertaking.
- The road on the current route is not built until 1802.



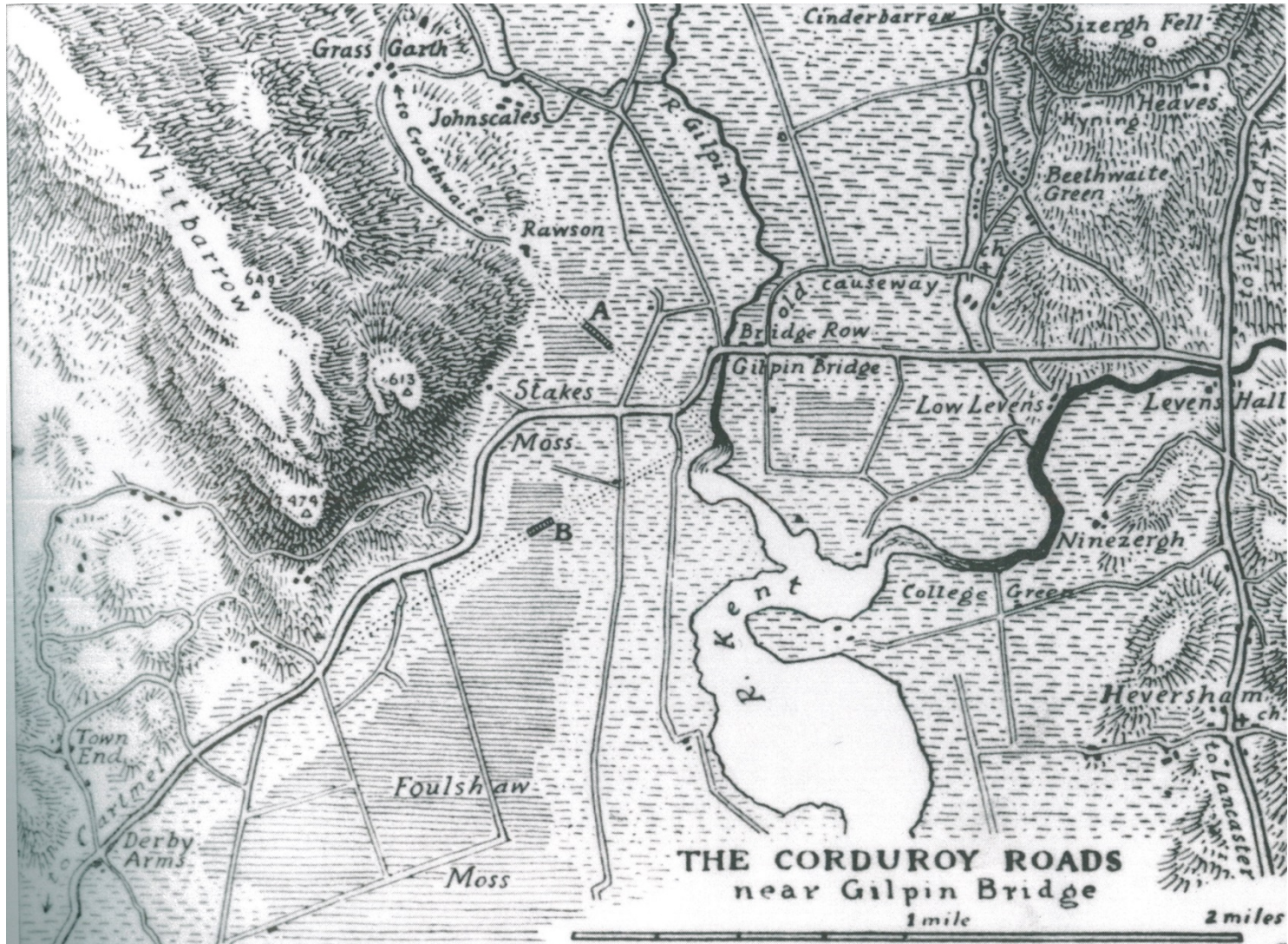
Trackway



Trackway

- Uncovered by peat cutters early 20th Century.
- 180 yards on Stakes Moss.
- 50 yards on Rawsons Moss.
- Probably dates to the Middle Bronze Age

Trackway



Trackway

- Initially interpreted as actual roads.
- Possibly more likely to be ceremonial.
- Practicalities support this as they do not seem to have shown much wear and have not been re-laid.

Exploitation

- Grazing rights from 1241
- Dispute 1315 – to paraphrase -Sir Walter, his heirs and tenants have the right to dig turves from the commons everywhere in Levens.
- Peat is being used as fuel for salt making around Morecambe Bay.

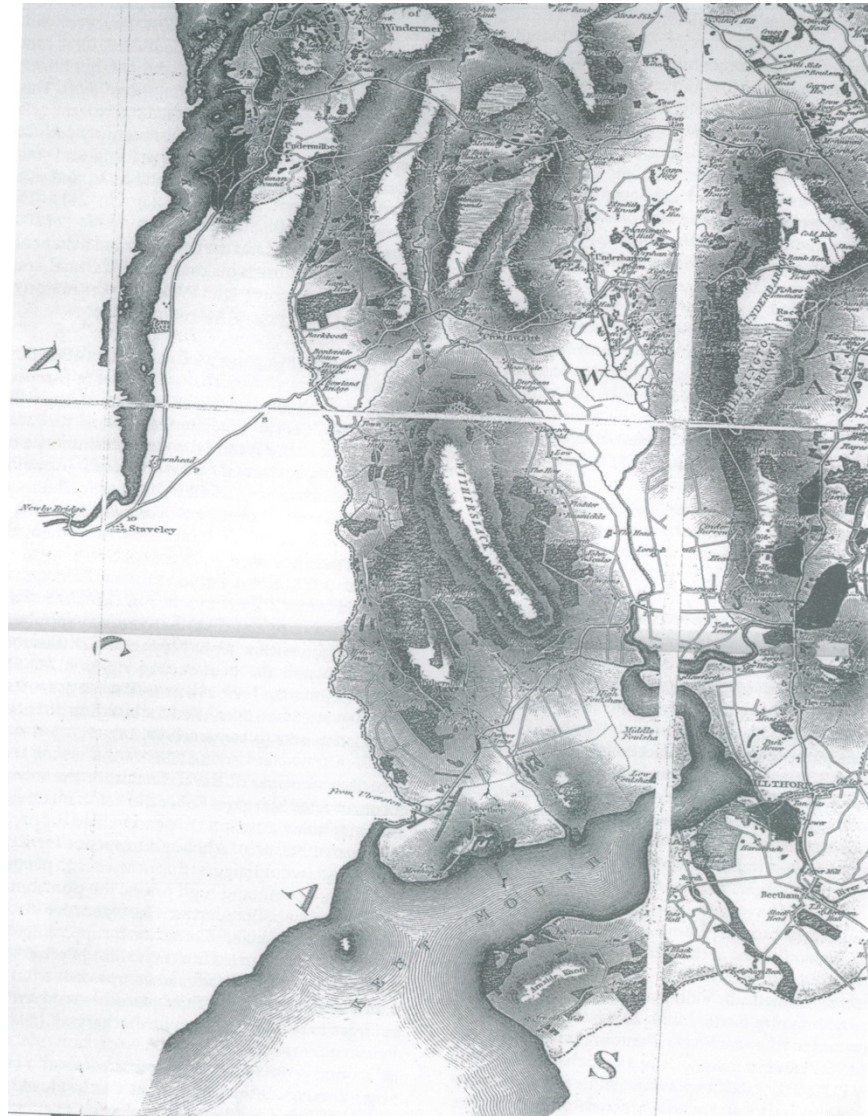
Complex Arrangements

- 1710 a lease of turbary rights to 10 people.
- 19 articles in the lease describe how they must work.
- They pay 2 shillings and sixpence for each rood breadth of cutting.
- They must deliver peat to the lord and do a days shearing.
- Big fines for non-compliance.

Jeffrey's 1770



Greewood 1824



OS 1863



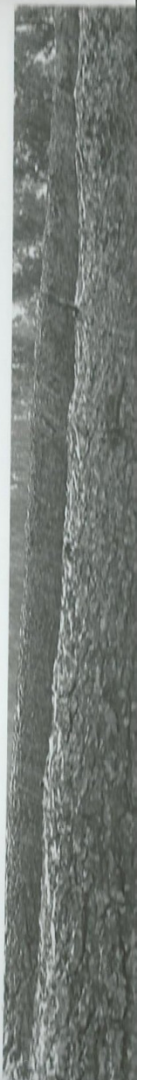
Very Different Maps

- The differences probably relate to enclosure.
- William Pearson writing in 1844 describes the old peat cuttings before enclosure as common and very heavily grazed by all kinds of livestock
- Post enclosure (after 1829) they are fertile arable land.

Westmorland Technique



Large Scale



Drying Cote Levens



Charlie Shaw



Munn Rankin

Sphagnum peat described by Rankin (1911) from the mosses of Lonsdale in north Lancashire (Fig. 47 and Pl. 11) and separated from the Sub-Boreal peat below by an unconformity, or "limiting horizon" (German *Grenzhorizont*) which is a very widespread feature of the Sub-Boreal-Sub-Atlantic transition throughout Europe. Something like the general climatic conditions of the Sub-Atlantic period have lasted apparently up to the present day. In

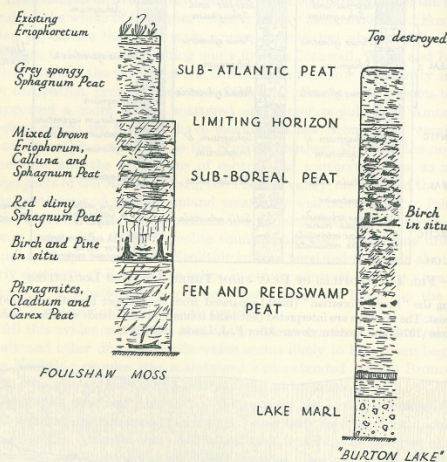


FIG. 47. STRATIGRAPHY OF PEAT MOSSES IN LONSDALE (N. LANCASHIRE)

These raised peat mosses were built up above fens (see Chapter XXXIV), the basal peat consisting of the remains of fen and reedswamp plants. In the section of Foulshaw Moss the layer of pine and birch stumps *in situ* marks the onset of drier conditions permitting the invasion of trees, which were later engulfed in bogmoss. The mixed brown Sub-Boreal peat consists of bogmoss, cottongrass and heather. The "limiting horizon" (*Grenzhorizont*), which is an actual "unconformity" in the peat, marks the close of the Sub-Atlantic period and continued down to the nineteenth century when the moss became drier and was occupied by a surface vegetation of cottongrass, etc. In the generalised section through the peat of the old "Burton Lake" basin the shell marl deposited on the lake floor is overlaid by reedswamp and fen peat and this again by the same types of Sub-Boreal peat with birch stumps *in situ* at the base and (above the limiting horizon) Sub-Atlantic peat. After Rankin, 1911.



Phot. 22. Sub-Boreal birch stumps underlain by Atlantic and overlain by Sub-Boreal peat. Above is seen the "limiting horizon" (*Grenzhorizont*) separating the Sub-Boreal from the darker spongy Sub-Atlantic peat, the top of which is destroyed. "Burton Lake" area, Silverdale, N. Lanes.



Phot. 23. "Conduroy road" probably marking the *Grenzhorizont*, against which the trowel is held by W. M. Rankin. The surface peat has dried as a result of draining and is now occupied by heather. Foulshaw Moss, N. Lanes. Mrs. Condes.

PEAT SECTIONS IN RAISED MOSSES

Munn-Rankin in Tansley 1911

- A history in science. Tansley 1911 and 1939 are seminal works in ecology.
- Describes a bog vegetation recognisable today, but with pool remnants.
- However, he says that 70 years previously the bog is impassable (James Armer dies in 1830).

Restoration

- Cumbria Wildlife Trust bought Foulshaw in the late 1990's
- Cleared some 300 hectares of trees (conventional forestry, skylining).
- Cleared 30+ hectares of Rhododendron mostly by tractor mounted flail.
- Blocked ditches (peat dams, plastic piling/peat dams).
- Cell bunded all edges and cut-over areas (about 150 hectares in total). Completed March 2014.
- Bought and restored to wetland about 30 hectares of low grade agricultural fields. This includes introduction of wetland plant species

Audience

- History appeals to a different audience.
- More local/rural.
- More conservative/traditional.
- More people focussed.
- It also gives the opportunity to explain why restoration works are necessary to an audience otherwise sceptical of us.

Thanks

- Thankyous and acknowledgement to
- The late Larry Walling and Neil Robinson
- To Stephen Read and Levens History Society
- To Cumbria County Archive
- Museum of Lakeland Life



Cumbria



Protecting **Wildlife** for the Future