

# PEATLANDS & NATURAL CAPITAL

DIETER HELM

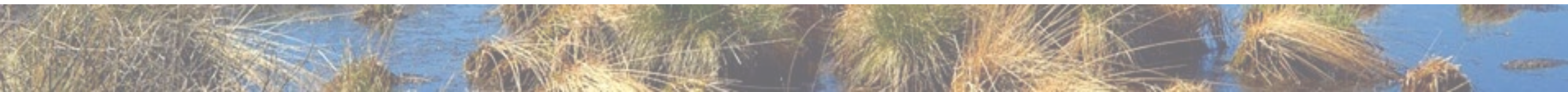
IUCN UK PEATLANDS PROGRAMME 8<sup>TH</sup> CONFERENCE

2-4<sup>TH</sup> OCTOBER 2018



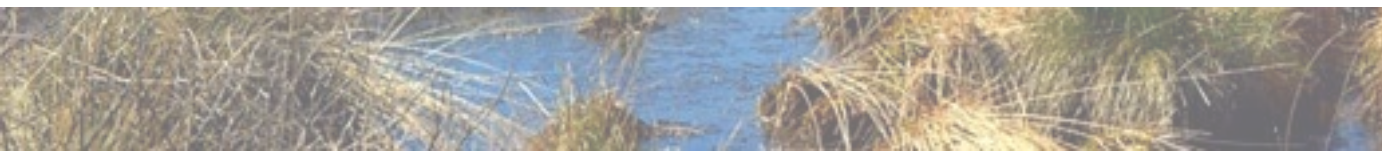
# QUESTIONS

- What is natural capital?
- How do peatlands fit into a natural capital framework?
- What are the public goods that peatlands provide?
- How should they be paid for?
- How can peatlands be enhanced?



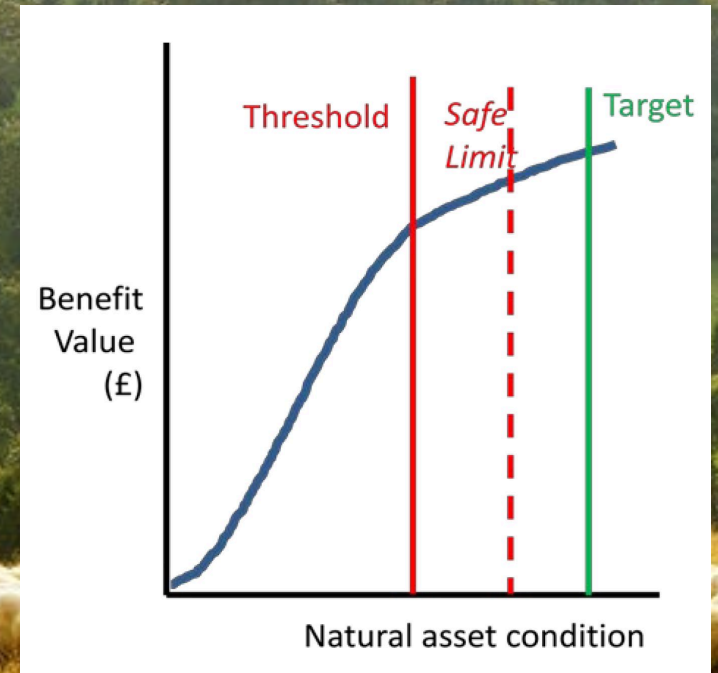
# WHAT IS NATURAL CAPITAL

- What nature gives us for free
- Assets and opportunities in systems
- Two types – renewables and non-renewables
- The special economics of renewable natural capital



# HOW DO PEATLANDS FIT INTO A NATURAL CAPITAL FRAMEWORK

- Assets in perpetuity
- Assets at risk thresholds and safe limits



# WHAT PUBLIC GOODS DO PEATLANDS PROVIDE

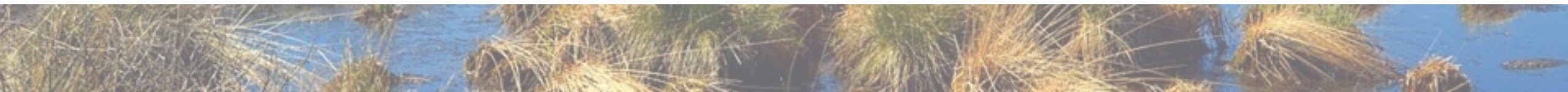
- **Multiple services**

CARBON

BIODIVERSITY

LANDSCAPE

WATER  
CATCHMENTS  
AND  
MANAGEMENT





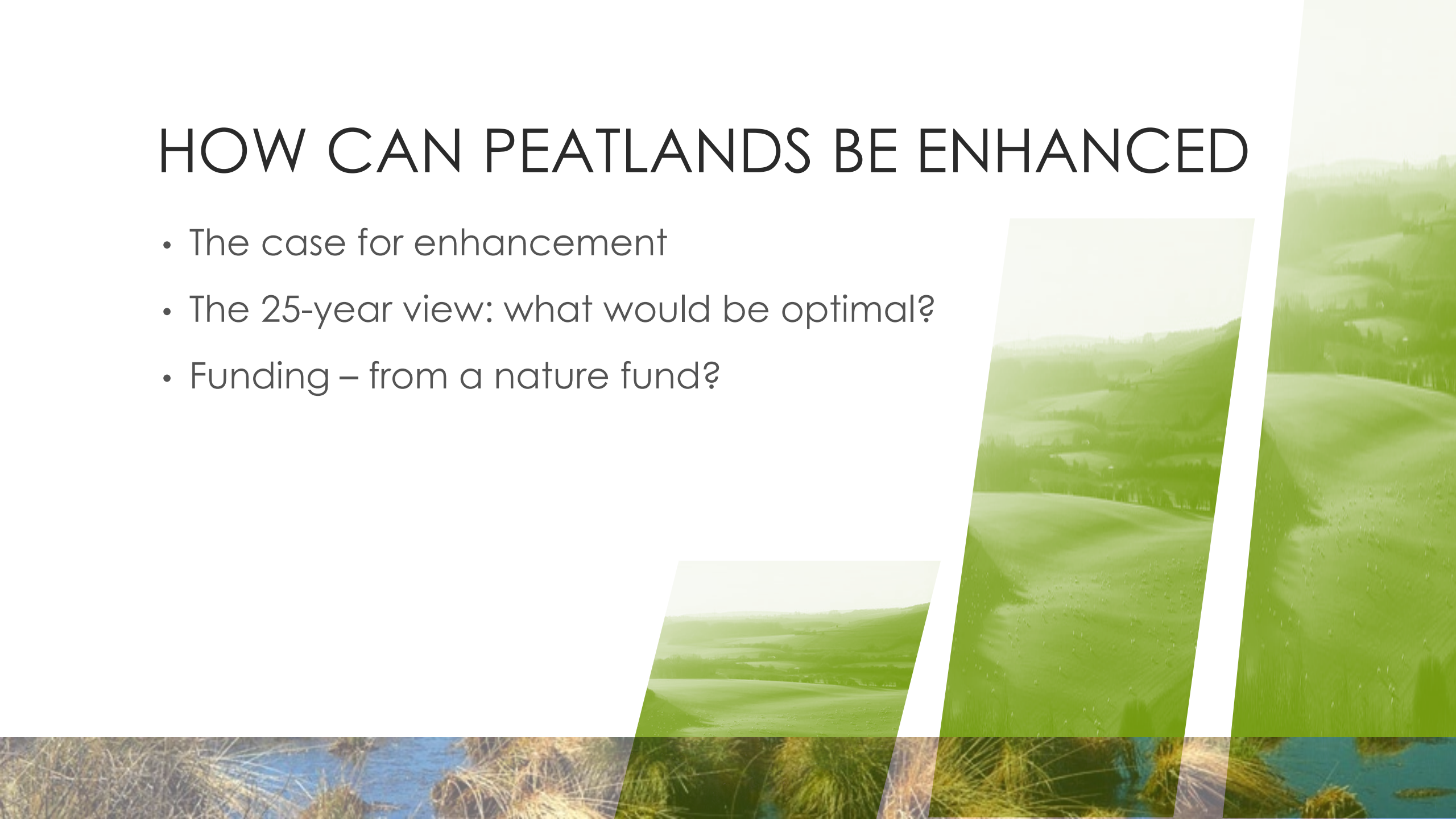
# HOW SHOULD THEY BE PAID FOR?

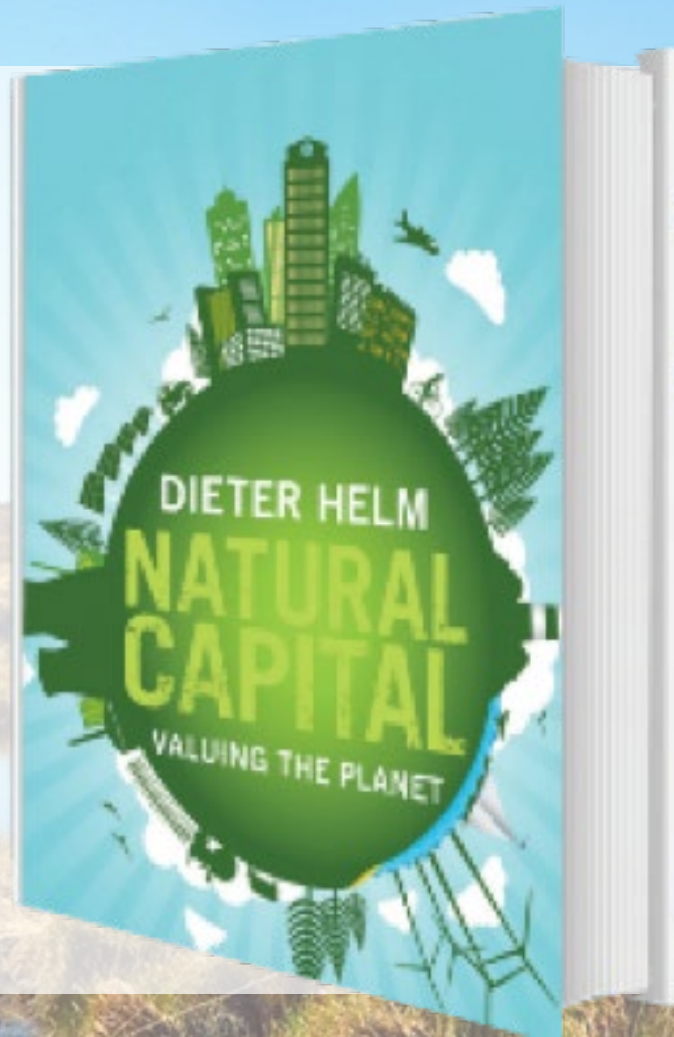
- Polluter pays principle
- Net environmental gains and compensation
- Public money for public goods



# HOW CAN PEATLANDS BE ENHANCED

- The case for enhancement
- The 25-year view: what would be optimal?
- Funding – from a nature fund?





[www.dieterhelm.co.uk](http://www.dieterhelm.co.uk)