

Monitoring cutaway peatland rehabilitation in Ireland

Progress and challenges

Mark McCorry





Table 3.1: Comparison of *Sphagnum* cover for Permanent Quadrats 1-5 (2012 & 2017).

Quadrat No.	2012	2017
1	10-20%	50-60%
2	5-10%	25-30%
3	20-30%	40%
4	20-30%	40%
5	1%	10%

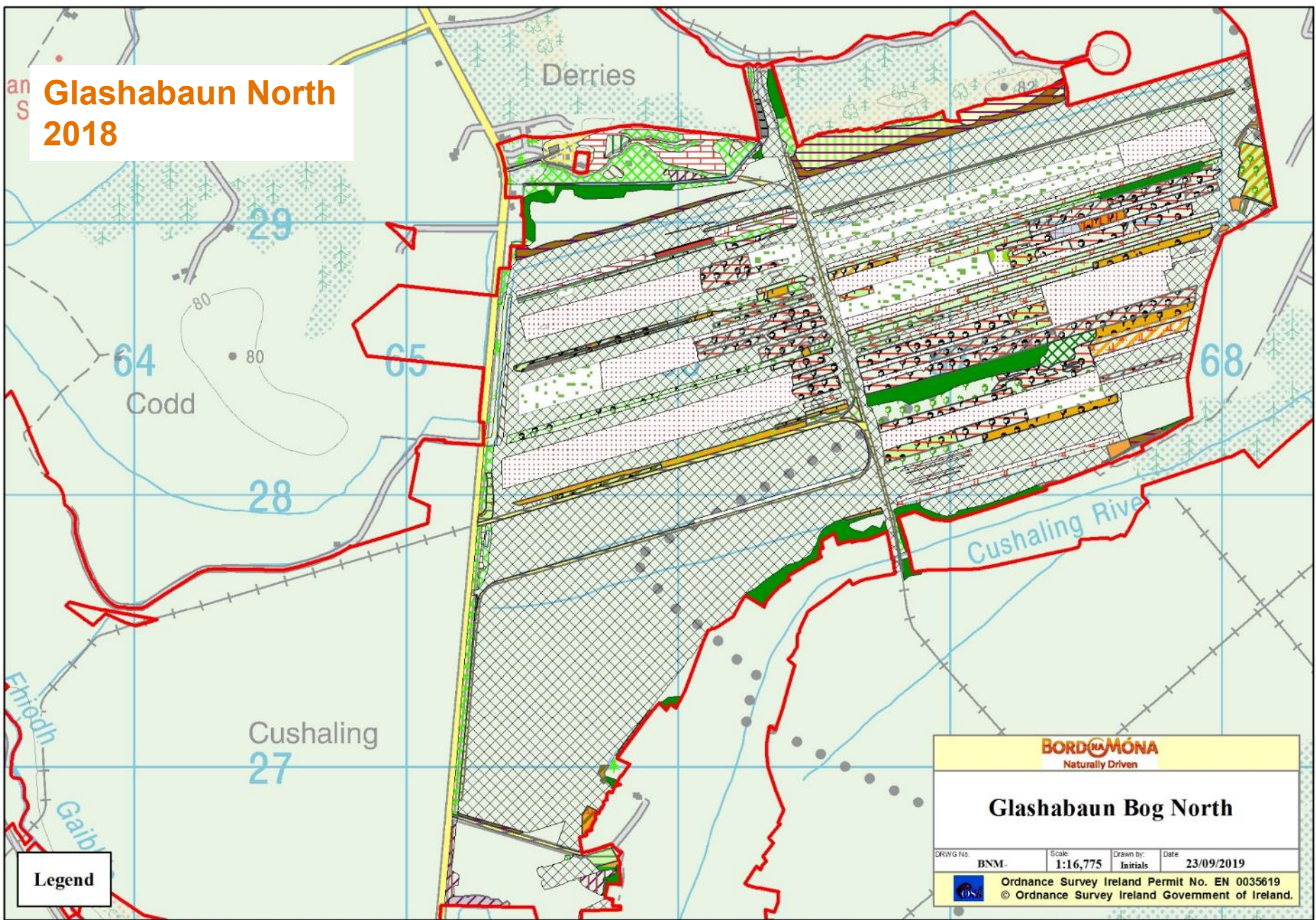
2012



2017




Glashabaun North 2018



Legend

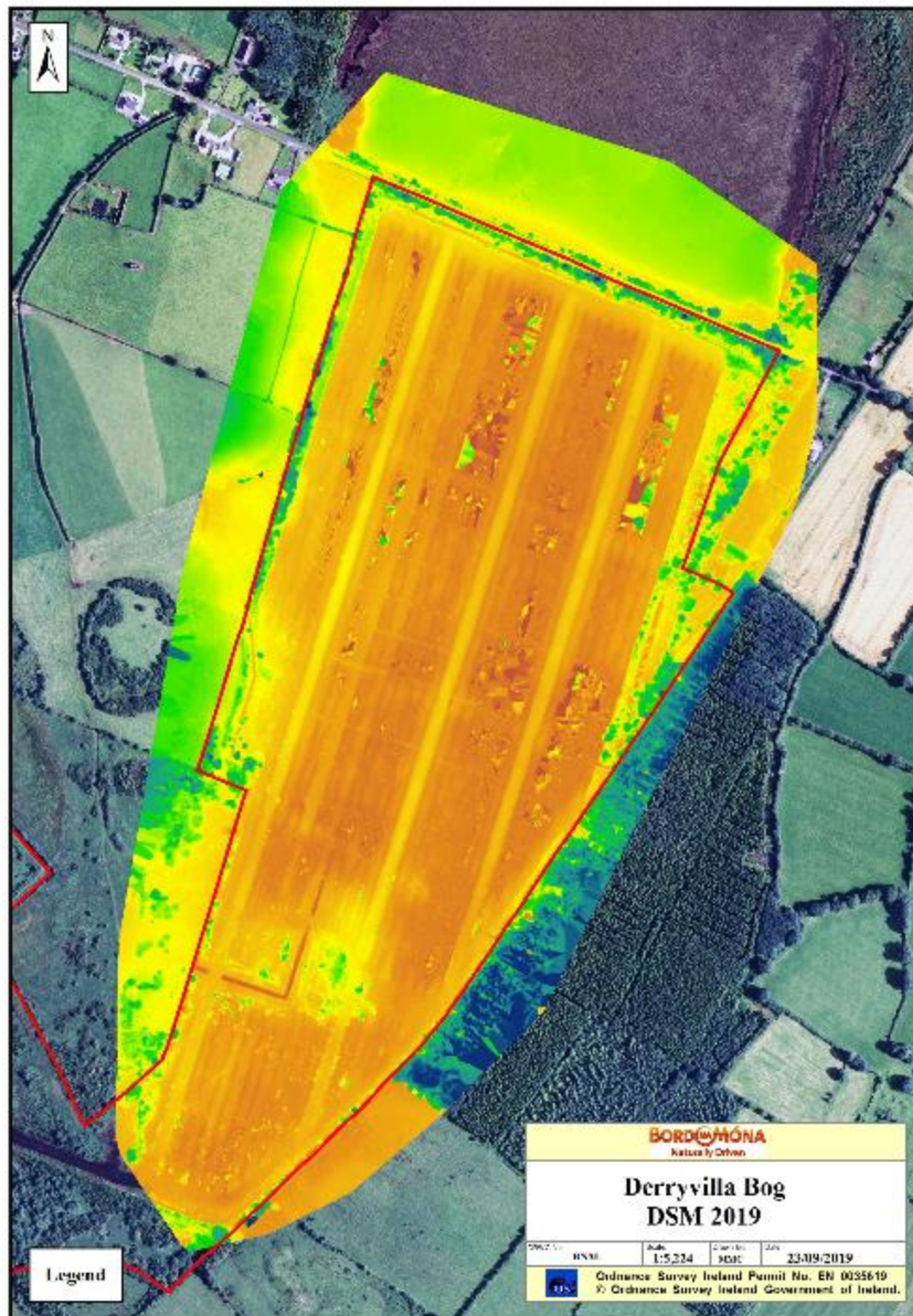
BORD NA MÓNA
Naturally Driven

Glashabaun Bog North

DRWG No:	BNM-	Scale:	1:16,775	Drawn by:	Initials	Date:	23/09/2019
 Ordnance Survey Ireland Permit No. EN 0035619 © Ordnance Survey Ireland Government of Ireland.							

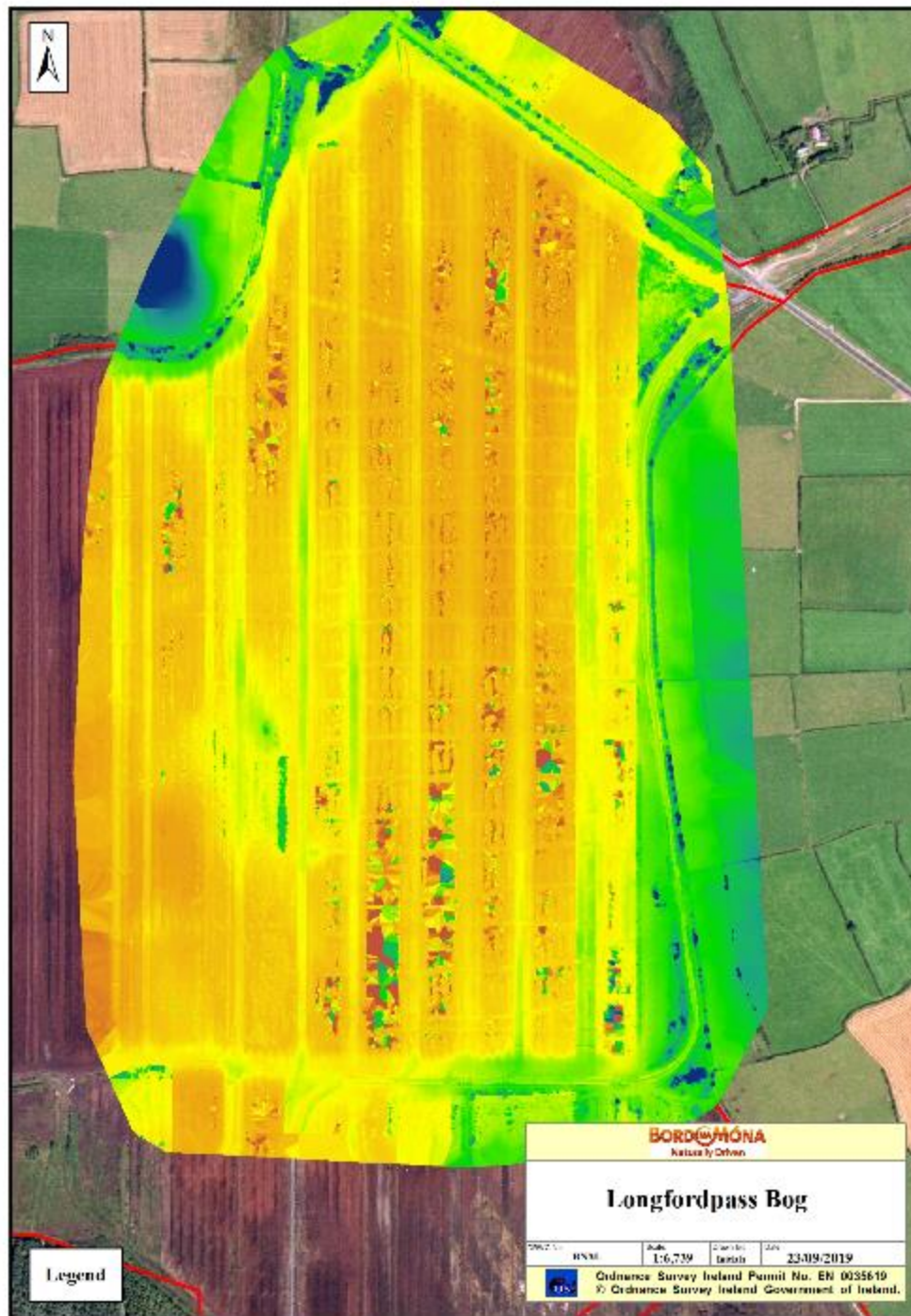


**Derries
2015**



**Derryvilla
2019**

DSM



Longfordpass
June 2019

DSM

Ecological monitoring

Collaborative projects on BnM cutaway

GHGs and water quality

Past

Turraun, Oweninny, Moyarwood, Blackwater

Present

Lullymore (BnM-funded, UCC and others)

SmartBog (EPA-funded, TCD and others)

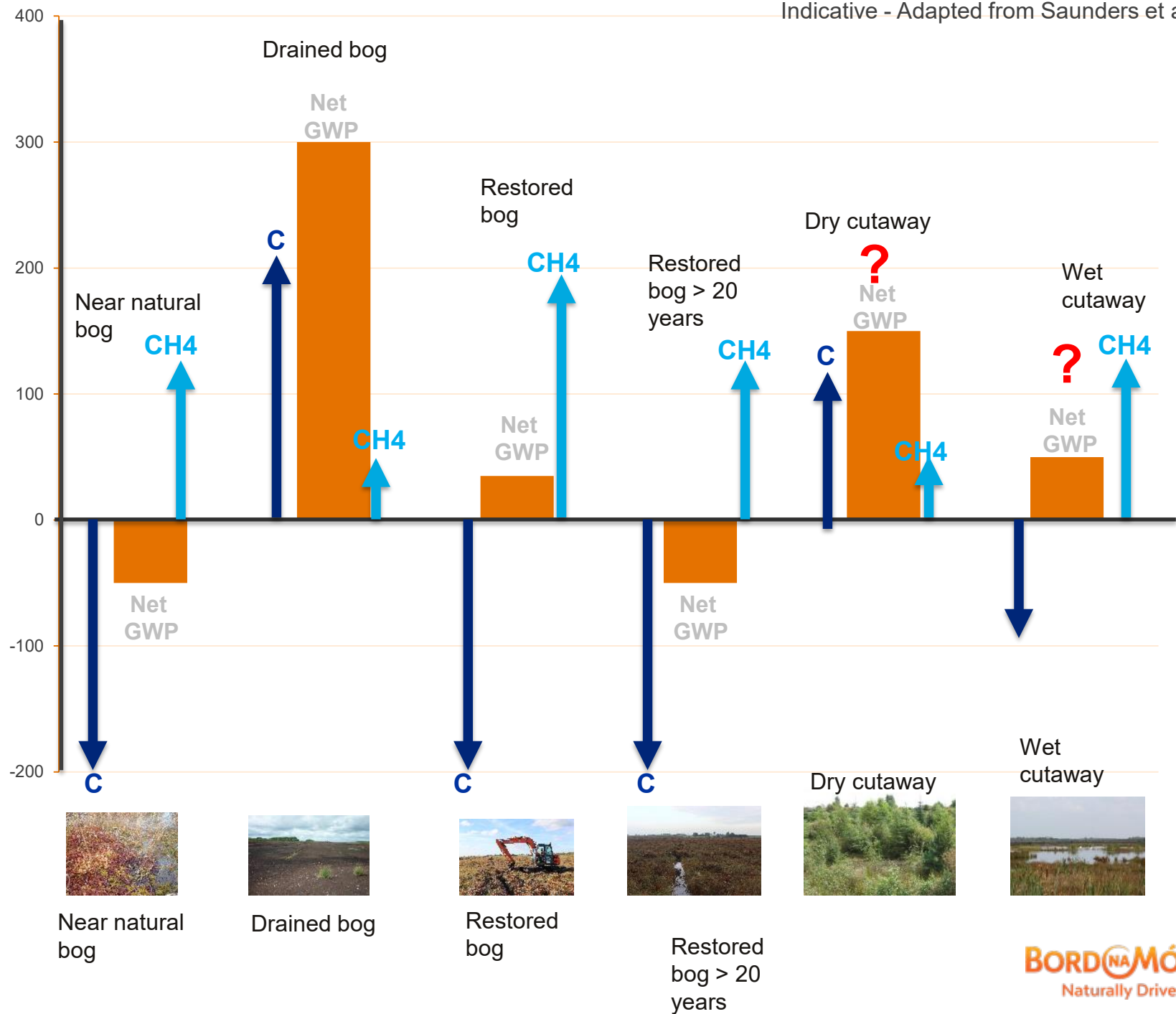
Swamp (EPA-funded, UCD)

Waterpeat (EPA-funded, UCG)

Carepeat (INTERREG funded, UCG)



Lullymore
Carbon flux tower (UCC/TCD/WIT)
PhD 2019 supported by BnM

Tonnes CO₂e per km² per year

A person wearing a black puffer jacket, black trousers, and black rubber boots is walking across a wooden plank bridge over a stream. The person has a backpack with a blue water bottle attached. The bridge is made of wooden planks and is bordered by wooden posts and blue rope. The stream is surrounded by tall grass and shrubs. In the background, there is a flat field with some trees and a small building under a cloudy sky.

Thank You