

**1** The 'Basic Peatland Assessment' has been developed as a rapid method for a simple condition assessment that feeds key driving data into national-scale satellite image analysis.

**2** The assessment provides the ground-truthed data for developing a technique for broad scale peatland assessment.

**3** We are exploring how this simple assessment can add value to local-scale understanding of site condition, while developing the database for national satellite image analysis.

**4** We have been working with a range of key stakeholders to develop this method into a robust and valuable rapid assessment.



**5** We would really appreciate your constructive feedback:

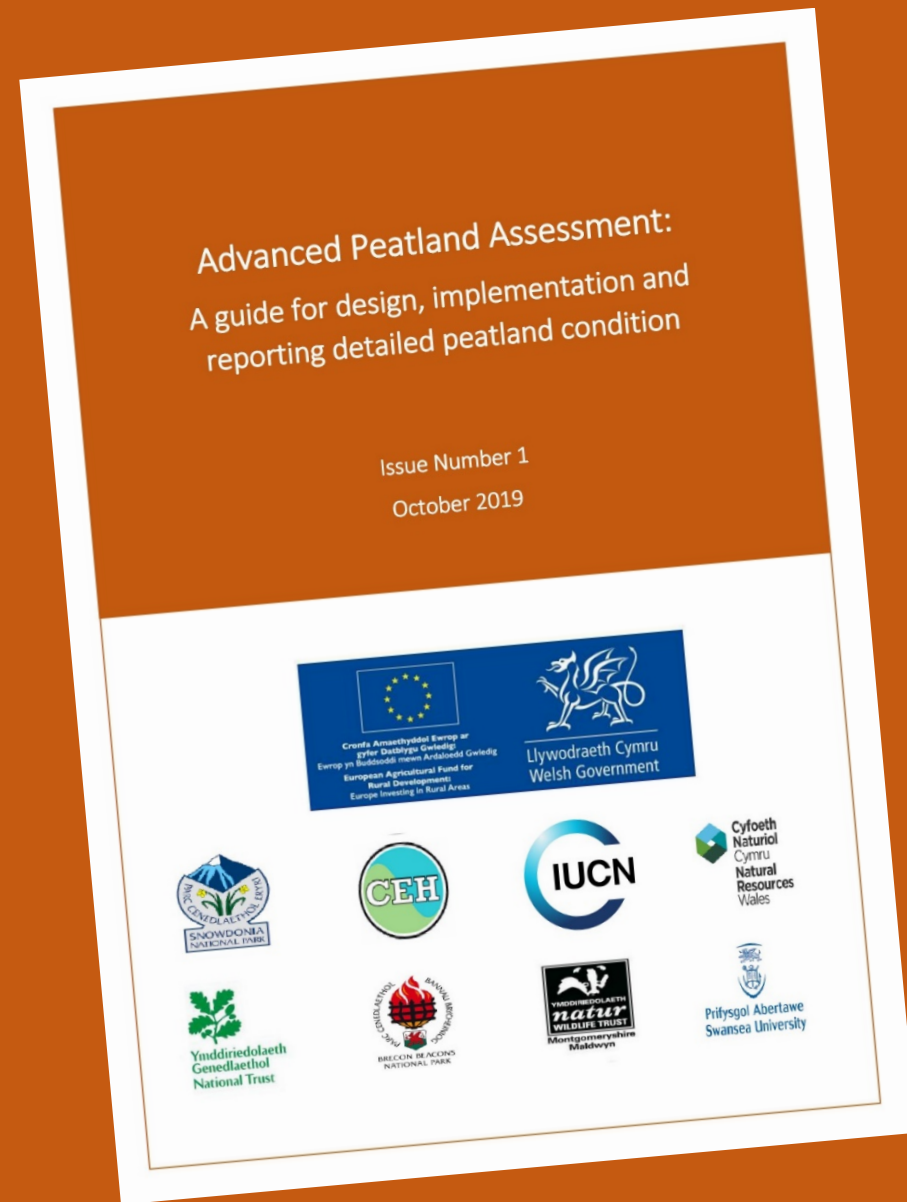
- Would you adopt this basic assessment?
- How could information be clearer?
- What do you think would really 'add value'?

Please feel free to make comment on a copy of the assessment and drop it in the box.

**6** This basic assessment goes hand in hand with the 'Advanced Peatland Assessment' that is currently in development. More information of the advanced assessment is available on the table or by getting in touch.

**7** If you have any questions get in touch via email: [aradbourne@ceh.ac.uk](mailto:aradbourne@ceh.ac.uk)

- 1 The 'Advanced Peatland Assessment' will be a guide to a range of peatland monitoring and assessment methods.
- 2 The assessment is currently in development and will be publically available soon.
- 3 The aim is to provide a **decision making guide** for design implementation and reporting peatland condition assessments, including considerations for project scope and data quality
- 4 It will attempt to standardise both basic and advanced core methods ensuring data outputs are comparable across projects and creating a robust evidence base for peatlands.



5 If you have any questions get in touch via email:  
[aradbourne@ceh.ac.uk](mailto:aradbourne@ceh.ac.uk)